

METINNO®

Aluminium Sliding Door Systems

Creating seamless aesthetics, Metinno Aluminium Sliding Door Systems offer the ideal solution for separating and joining two spaces. Components have been meticulously developed to allow designers to create distinctive work spaces, combining practicality with simplicity.

Select from wide and narrow-stile design options that pair perfectly with your choice of door hardware. Alternatively, design a sliding door with an integrated finger grip stile, eliminating extra costs of door hardware while also ensuring ongoing strength - even after years of usage.

Interlocking stiles are also available and an ideal solution for stacking doors. With it's one-piece design, avoid reliance on double sided tape and mechanical fixings to hold separate sections together, saving time and removing the possibility of frame fatigue.

The sliding doors roll on acetyl wheels which are perfectly combined with the aluminium floor track. It closes into a slimline receiving channel with an adjustable receiving strike with concealed fixings. With these unique qualities, this quiet and smooth running system offers a comprehensive range of innovative style and functionality solutions that are suitable to blend with any office decor.

Features and Benefits:

- Provides disabled friendly options yet maintains a slimline profile.
- Slimline glazing system with concealed locking.
- Unique flush mounted floor track system eliminates trip hazards.
- The door can be incorporated with Metinno Aluminium Cavity Slider System.
- Integrates with other Metinno aluminium partitioning suites.
- The full length integrated handle design eliminates the need for adhesive fixed "finger grips".
- Integrated acoustic seals.
- Space saving alternative to hinged doors.
- Superior longevity with no hinge or framework fatigue.
- Available in natural anodised or mill finish for powder coating to any colour.



METINNO®

5000 Series

Aluminium Sliding Door System

- Slimline glazing system
- Fully concealed fixings
- No trip hazards with flush mounted floor track system, allowing wheelchair access
- Combine with Metinno Cavity Slider System
- Option of full length integrated handle, acoustic seals and concealed locking
- Available in natural anodised or mill finish for powder coating to any colour



METINNO® 5000 Series

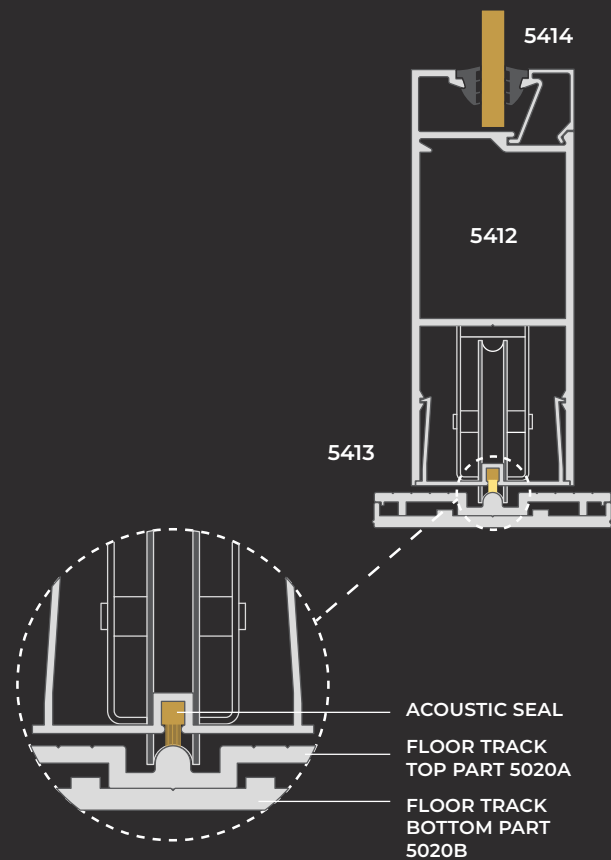
Aluminium Sliding Door System

Sophisticated sliding door system

This system focuses on modern, sharp lines which are the result of the small radii achieved in the design of the aluminium sections. It allows designers to create distinctive workspaces combining practicality with simplicity and it is subtle enough to blend with any office décor.

It allows the option of an attractive and functional sliding door which features a floor track that sits flush with carpet. The lightweight aluminium head guide fixes to the ceiling and eliminates the need for additional structural framework. The sliding door rolls on acetyl wheels which are perfectly combined with the aluminium floor track. It closes into a slimline receiving channel with an adjustable receiving strike with concealed fixings.

The Metinno 5000 Series sliding door incorporates the option of a full height integrated finger grip handle removing the cost of other door hardware. Overall longevity of the system is increased as there is no frame fatigue caused from hinges.



5000 Series

Improve acoustic performance

The uniquely designed rail brings you a sliding door with acoustic seals on all four sides. Whether it is essential for an increased acoustic performance, or improving climate control, this addition to the Metinno 5000 Series will literally close a gap that acoustic specialists and design consultants have been looking for, for many years.

With the acoustic seal in header track and both leading and trailing edge, a significant acoustic value is already achieved. The additional acoustic seal between the base of door and wheel arch of floor track effectively completes the system.

For more product inspiration and to download CAD and Specification files visit adxarchitectural.com.au.

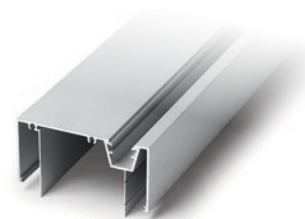
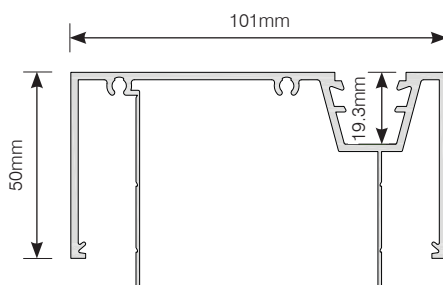


METINNO® 5000 Series

ALUMINIUM SLIDING DOOR SYSTEM

5101 | Frontline Main Frame

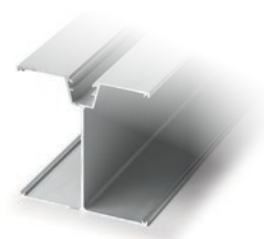
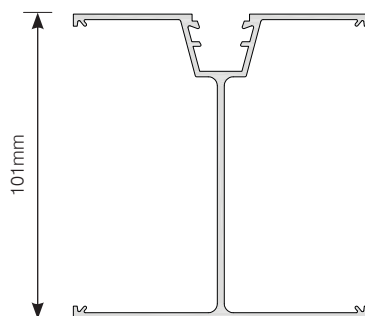
- Used in conjunction with 5032 to create a slimline receiving stile.
- Used where it is required to have the closing stile of the sliding door away from the adjacent wall.
- Can be utilised as a Main Frame section of a Frontline Glazing System.



Section	Natural Anodised Available Length (m)	Mill Finish Available Length (m)	Connects With
5101	3.1	-	5102, 5004, 5204, 5032

5000 | 3 Way Corner Post

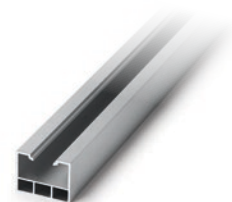
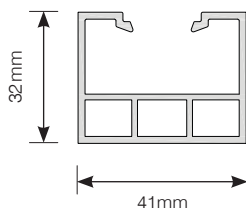
- A versatile solution where a corner or 3 way partition junction is required.
- Utilised with the sliding door system it creates a functional and flexible intersection of glazed and plasterboard partitions.



Section	Natural Anodised Available Length (m)	Mill Finish Available Length (m)	Connects With
5000	3.1	-	1006, 5004, 5007, 5032, 5204

5001 | Main Frame

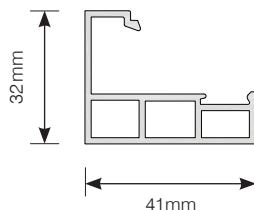
- Designed to run parallel with the sliding door to maintain consistent lineal appearance.
- Can be combined with the Metinno 1000.
- Joined with 5007 Spiggots eliminating exposed fixings.



Section	Natural Anodised Available Length (m)	Mill Finish Available Length (m)	Connects With
5001	3.1	-	5007

5002 | Sill Transom

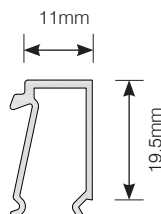
- Used in conjunction with 5001 to facilitate the glazing of Metinno 5000.
- The unique 5007 Spiggot system allows for a simple joining system of the 5001 and 5002 sections eliminating exposed face fix riveting methods.



Section	Natural Anodised Available Length (m)	Mill Finish Available Length (m)	Connects With
5002	2.8	-	5003, 5007

5003 | Sill Bead

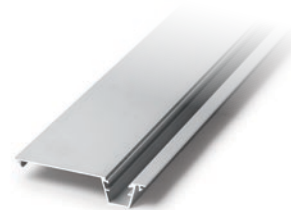
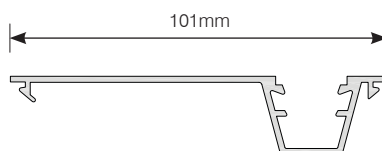
- Used in conjunction with 5002.
- Removable for installation of glass.



Section	Natural Anodised Available Length (m)	Mill Finish Available Length (m)	Connects With
5003	2.8	-	5002

5004 | Frontline Glazing Adaptor

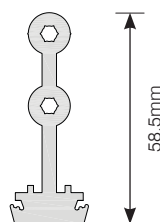
- Designed primarily to clip into the 5000 and 5101 sections to create a versatile glazing system along with the Sliding Door System.
- Can also be clipped into 5102 and 5201 sections.



Section	Natural Anodised Available Length (m)	Mill Finish Available Length (m)	Connects With
5004	3.1	-	5000, 5101, 5102, 5201, 5202

5007 | Spiggot

- Designed and machined to the highest standard, facilitating mainly the connection of the 5001 & 5002 sections and any other Metinno pocket sections.
- No exposed fixings.



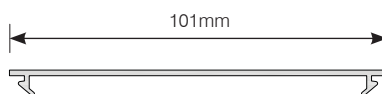
Section	Available Finish	Connects With
5007	Mill Finish	5000, 5001, 5002, 5004, 5101

METINNO® 5000 Series

ALUMINIUM SLIDING DOOR SYSTEM

1006 | Flat Filler

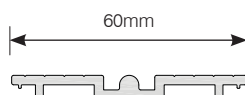
- Full width filler designed to fit into the 3 way corner post.
- It can also be utilized along with the Metinno 1000 and 2000.



Section	Natural Anodised Available Length (m)	Mill Finish Available Length (m)	Connects With
1006	3.1	-	System: 1000, 2000, 5000 Main Frames

5020A | Sliding Door Floor Track Top Section

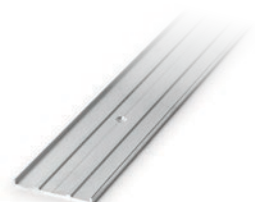
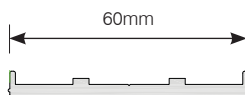
- The top section of the 2 piece Floor Track system.
- Designed to eliminate the need of any exposed fixings.
- Provides an overall profile of 9mm making it easy to create a level finish to floor coverings.
- Door Stop required (DAX12802SSS).



Section	Natural Anodised Available Length (m)	Mill Finish Available Length (m)	Connects With
5020A	4.0	-	5020B

5020B | Sliding Door Floor Track Base

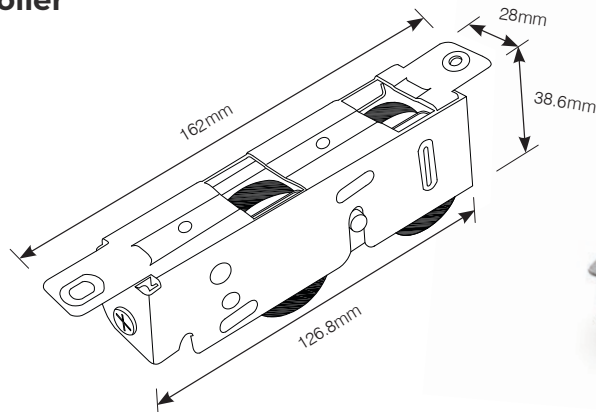
- The base section of the 2 piece Floor Track system.
- Allows the installer to fasten and level the base prior to installing the 5020A Track Top Section.
- Pre drilled and countersunk at 300mm centres.
- Recommended to use construction grade polyurethane sealant to bond the 2 sections together.



Section	Natural Anodised Available Length (m)	Mill Finish Available Length (m)	Connects With
5020B	-	4.0, 6.0	5020A

5022 | Commercial Door Roller

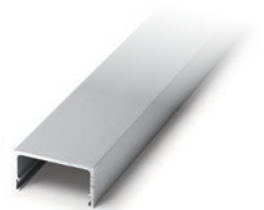
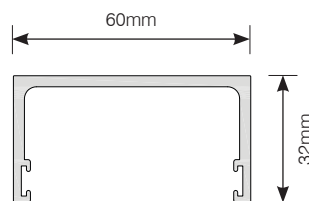
- Designed to fit within the 5412 Bottom Door Rails.
- Provides a commercial grade height adjustable roller system.
- A stainless steel carriage construction with dual acetyl wheels.



Section	Available Finish	Connects With
5022	Stainless Steel	5412

5030 | Sliding Door Top Guide

- Used as the top head guide which is fixed to the ceiling.
- Has the same 32mm edge profile to match 1000, 2000, 3000, 5000 systems.
- Door Stop required (DAX12802SSS).



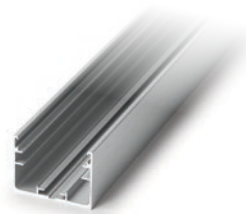
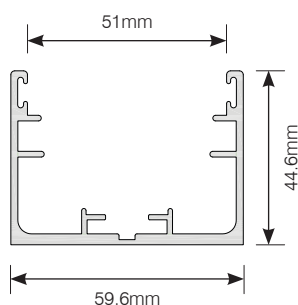
Section	Natural Anodised Available Length (m)	Mill Finish Available Length (m)	Connects With
5030	4.0, 6.5	-	1020

METINNO® 5000 Series

ALUMINIUM SLIDING DOOR SYSTEM

5031A | Receiving Stile

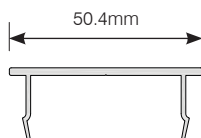
- Designed to provide a unique receiving stile.
- Incorporates a simple concealed fixing system of the latching strike.
- No exposed fixings.



Section	Natural Anodised Available Length (m)	Mill Finish Available Length (m)	Connects With
5031A	3.1	-	5031B

5031B | Receiving Stile Infill

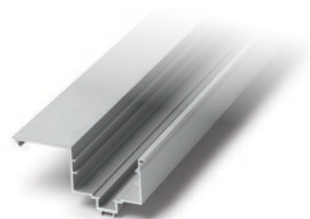
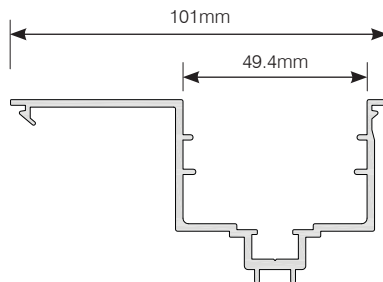
- Designed to clip into the 5031A section which conceals all fixings and the latching strike.



Section	Natural Anodised Available Length (m)	Mill Finish Available Length (m)	Connects With
5031B	3.1	-	1020, 5031A

5032 | Receiving Channel Adaptor

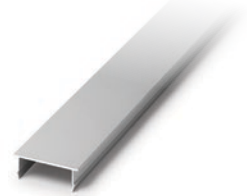
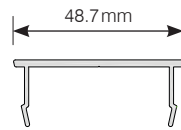
- Designed to be used with sections 5000 and 5101.
- Provides a unique recessed receiving stile.
- Incorporates a simple concealed fixing system of the latching strike.
- No exposed fixings.



Section	Natural Anodised Available Length (m)	Mill Finish Available Length (m)	Connects With
5032	3.1	-	5000, 5101, 5033

5033 | Receiving Channel Adaptor Infill

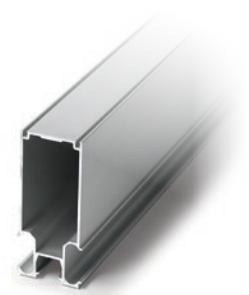
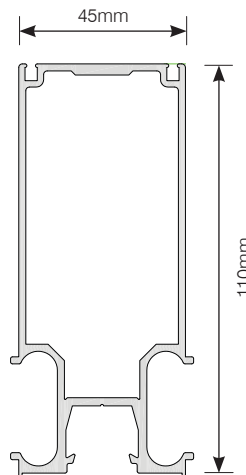
- Designed to clip into 5032 section which conceals all fixings and the latching strike.



Section	Natural Anodised Available Length (m)	Mill Finish Available Length (m)	Connects With
5033	3.1	-	5031A, 5032

5061 | Easygrip Stile End Seal

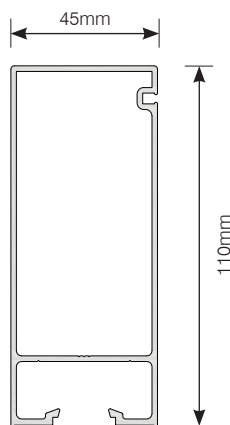
- Unique integrated finger grip eliminating the requirement of a handle.
- Provision for an acoustic brush seal incorporated on the end of the section.
- To be used as a leading stile.
- Works with the 5031 and 5032 receiving stiles.



Section	Natural Anodised Available Length (m)	Mill Finish Available Length (m)	Connects With
5061	2.8, 3.1	2.8, 3.1	5412, 5065, PS8, PS13

5062 | Trailing Stile Side Seal

- Provision for an acoustic brush seal incorporated on the side of the section.
- Allows it to be used for either a trailing or leading stile.
- Architectural back to back handles can be used.



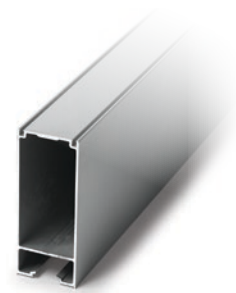
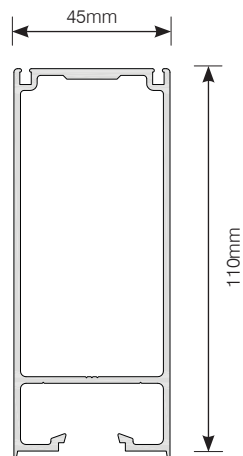
Section	Natural Anodised Available Length (m)	Mill Finish Available Length (m)	Connects With
5062	2.8, 3.1	2.8, 3.1	5412, 5064, PS13, PS8

METINNO® 5000 Series

ALUMINIUM SLIDING DOOR SYSTEM

5063 | Leading Stile End Seal

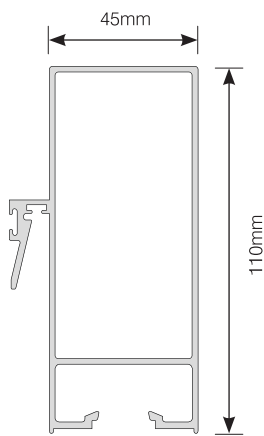
- Provision for an acoustic brush seal incorporated on the end of the section.
- To be used as a leading stile.
- Works with the 5031 and 5032 receiving stiles.
- Architectural back to back handles can be used.



Section	Natural Anodised Available Length (m)	Mill Finish Available Length (m)	Connects With
5063	2.8, 3.1	2.8	5412, 5064, PS13, PS8

5066 | Interlock Stile

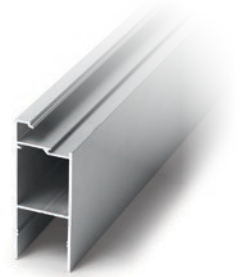
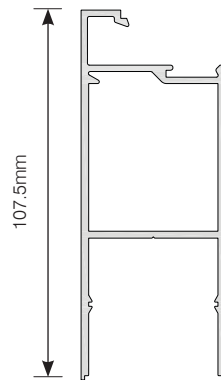
- Innovative solution for stacking door systems.
- Features integrated interlock.
- Eliminates reliance on double sided tape or labour intensive mechanical fixings to hold a separate interlock section.



Section	Natural Anodised Available Length (m)	Mill Finish Available Length (m)	Connects With
5066	3.1	-	5412, 5064

5412 | Door Rail

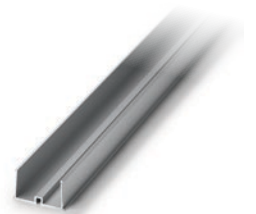
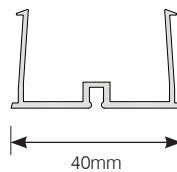
- This section is designed to accept the unique 5413 Acoustic Bottom Seal Adaptor for sliding and hinged doors.



Section	Natural Anodised Available Length (m)	Mill Finish Available Length (m)	Connects With
5412	2.8, 6.5	2.9, 6.5	5413, 5414

5413 | Door Seal Adaptor

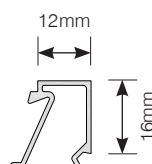
- Designed to be installed in the bottom of the 5412 Door Rail section where a concealed acoustic seal is required for sliding and hinged aluminium doors.



Section	Natural Anodised Available Length (m)	Mill Finish Available Length (m)	Connects With
5413	2.8	-	5412

5414 | Door Bead

- Used in conjunction with 5412 Door Rail to facilitate the glazing of the door.



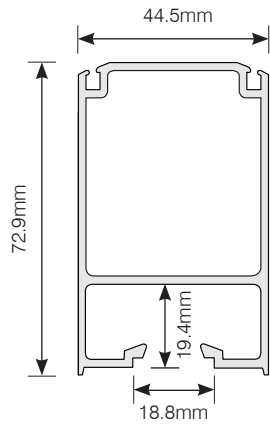
Section	Natural Anodised Available Length (m)	Mill Finish Available Length (m)	Connects With
5414	2.8, 6.5	2.9	5412

METINNO® 5000 Series

ALUMINIUM SLIDING DOOR SYSTEM

5912 | Narrow Stile End Seal

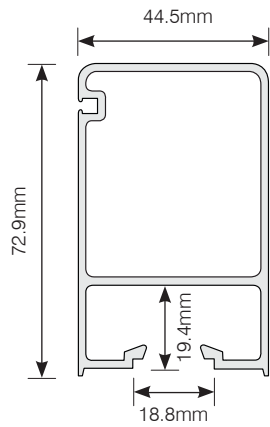
- Provision for an acoustic brush seal incorporated on the end of the section.
- To be used as a leading stile.
- Works with the 5031 and 5032 receiving stiles.
- Architectural back to back handles can be used.



Section	Natural Anodised Available Length (m)	Mill Finish Available Length (m)	Connects With
5912	6.5	6.5	5064, PS13, PS8

5908 | Narrow Stile Side Seal

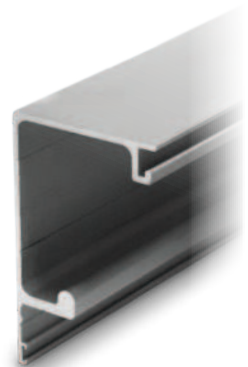
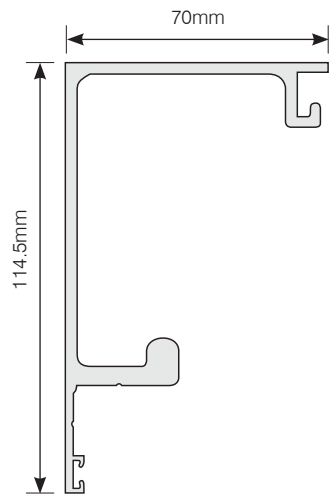
- Provision for an acoustic brush seal incorporated on the side of the section.
- Allows it to be used for either a trailing or leading stile.
- Architectural back to back handles can be used.



Section	Natural Anodised Available Length (m)	Mill Finish Available Length (m)	Connects With
5908	6.5	6.5	5064, PS16

5453 | Top Roller Pelmet Track

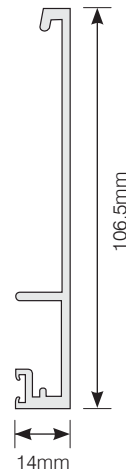
- Sturdy construction supporting 150kg loads.
- Connects with the 5454 top roller heavy duty pelmet to hold 5024 roller in place.
- Suits all timber and 5000 Series aluminium sliding doors.



Section	Natural Anodised Available Length (m)	Mill Finish Available Length (m)	Connects With
5453	6.5	6.5	5454, 1020G, 1020B, 5024

5454 | Top Roller Pelmet

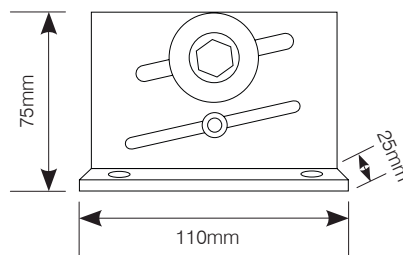
- Conceals roller mechanisms when integrated with 5453 Top Hung Pelmet Track.



Section	Natural Anodised Available Length (m)	Mill Finish Available Length (m)	Connects With
5454	6.5	6.5	5453, 1020G, 1020B

5024 | Top Door Roller

- Heavy duty construction supporting 250kg loads.
- Integrates with 5453 Top Hung Pelmet Track and 5454 Top Roller Heavy Duty Pelmet.



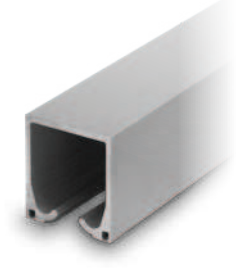
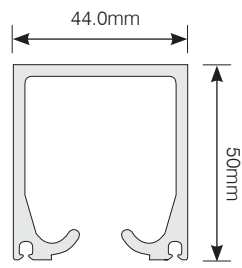
Section	Available Finish	Connects With
5024	Stainless Steel	5453, 5454

METINNO® 5000 Series

ALUMINIUM SLIDING DOOR SYSTEM

5461 | Top Roller Light Duty Track

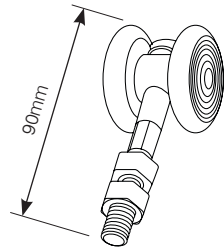
- Aesthetically pleasing track allowing sliding door rollers to open and close smoothly.
- Easily hidden by timber pelmet.
- Works with all standard cavity slider rollers.
- Integrates with 5019 Top Roller Light Duty.



Section	Natural Anodised Available Length (m)	Mill Finish Available Length (m)	Connects With
5461	6.5	6.5	5019

5019 | Top Door Roller Light Duty

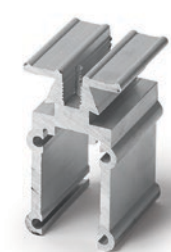
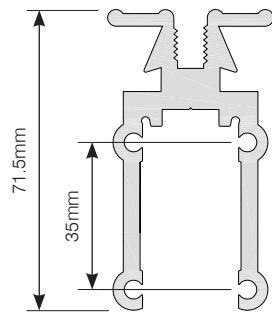
- Heavy duty construction supporting 80kg loads.
- Integrates with 5461 Top Roller Light Duty Track.



Section	Available Finish	Connects With
5019	Stainless Steel	5461

5064 | Door Spiggot

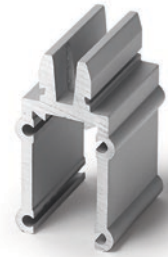
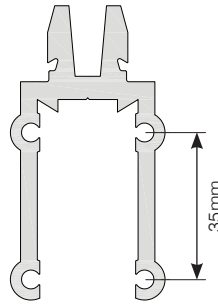
- Connects door intersections rigidly.



Section	Available Finish	Connects With
5064	Mill Finish	5062, 5063, 6002, 6003, 6909, 6910

5065 | Easygrip Door Spigot

- Connects door intersections rigidly.
- Designed to suit Easygrip stiles only.



Section	Available Finish	Connects With
5065	Mill Finish	5061

PS8 | 8mm Felt Seal for Leading Stile

- Used as an acoustic seal.
- Inserted into the aluminium profile on the trailing stile of the sliding aluminium door.



Section	Available Finish	Connects With
PS8	Grey & Black	5061, 5063

PS16 | 16mm Felt Seal for Trailing Stile

- Used as an acoustic seal.
- Inserted into the aluminium profile on the trailing stile of the sliding aluminium door.

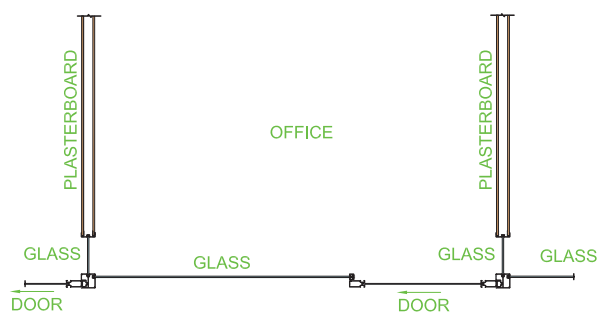


Section	Available Finish	Connects With
PS16	Grey & Black	5062, 5413

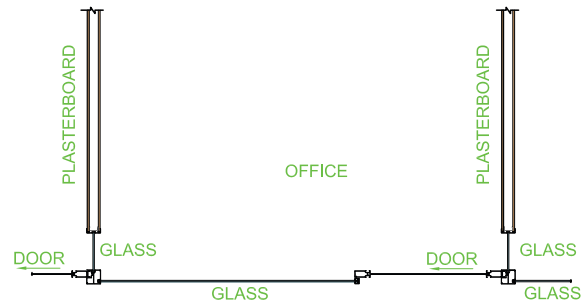
METINNO® 5000 Series

ALUMINIUM SLIDING DOOR SYSTEM

Detail 1 | Typical Floor Plan Showing Metinno 5000 Used in Office Construction

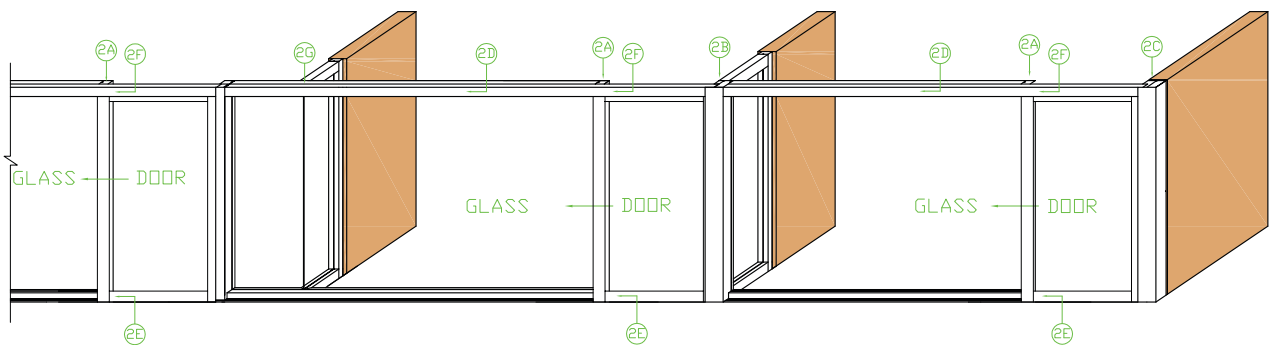


External Doors



Internal Doors

Detail 2 | Typical Elevation

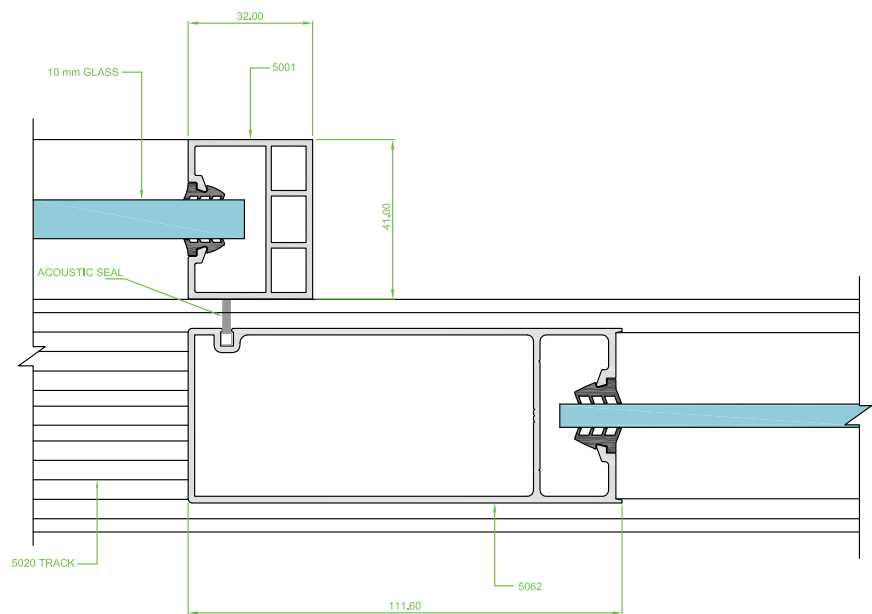


See following pages for drawings 2A to 2G

Colour Legends

- Aluminium Partition (face and section)
- Steel Stud
- Plasterboard Profile

Detail 2A | Horizontal Detail of Trailing Stile Showing Plain Stile

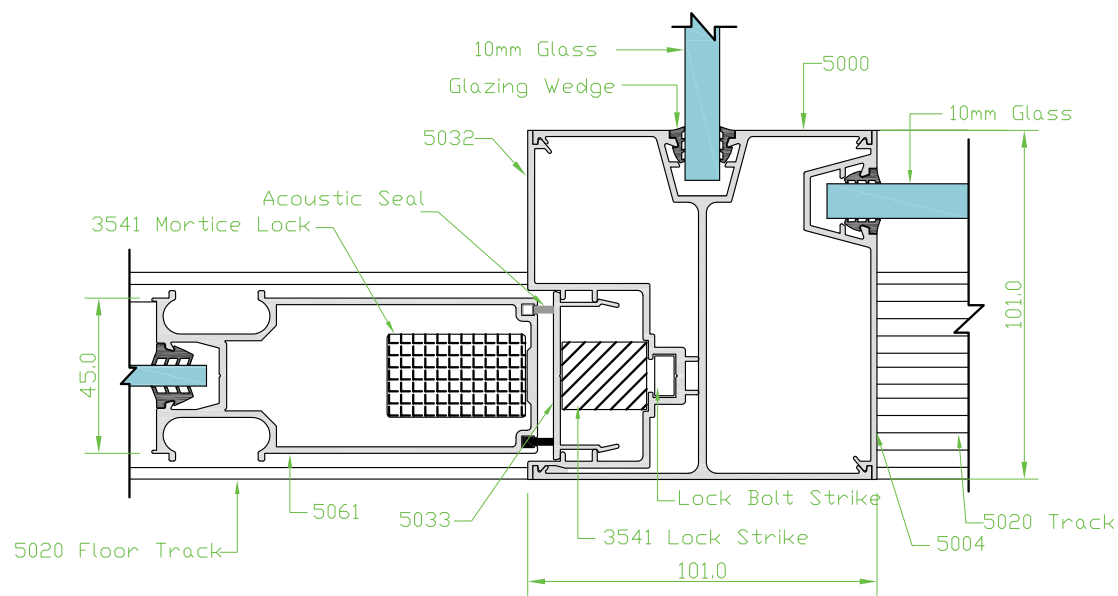


Trailing stile using 5062

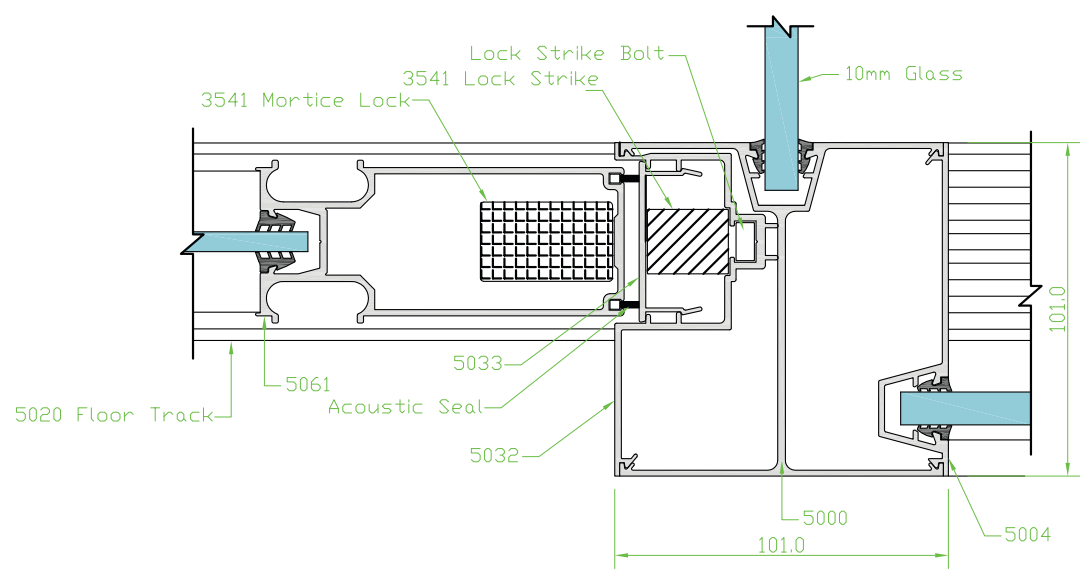
METINNO® 5000 Series

ALUMINIUM SLIDING DOOR SYSTEM

Detail 2B | Horizontal Detail of Post Detail with Glazing Used for Sliding Doors



Sliding door externally

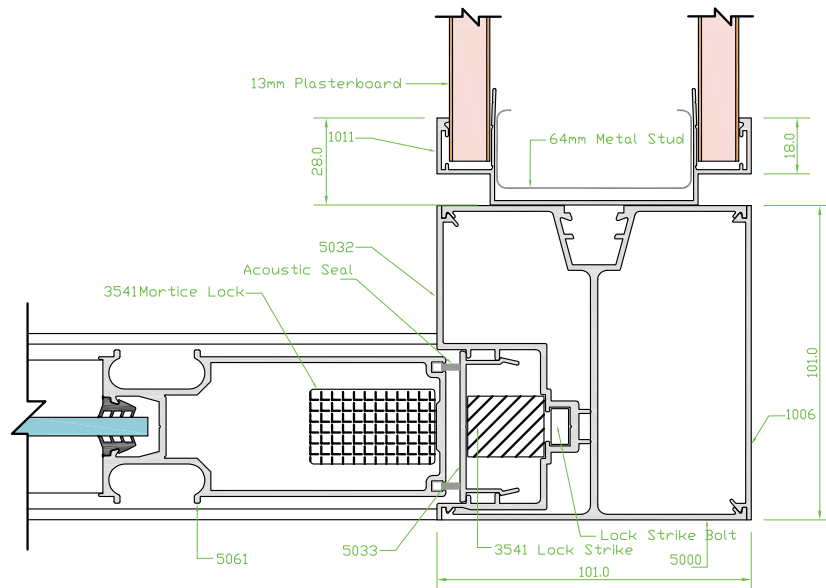


Sliding door internally

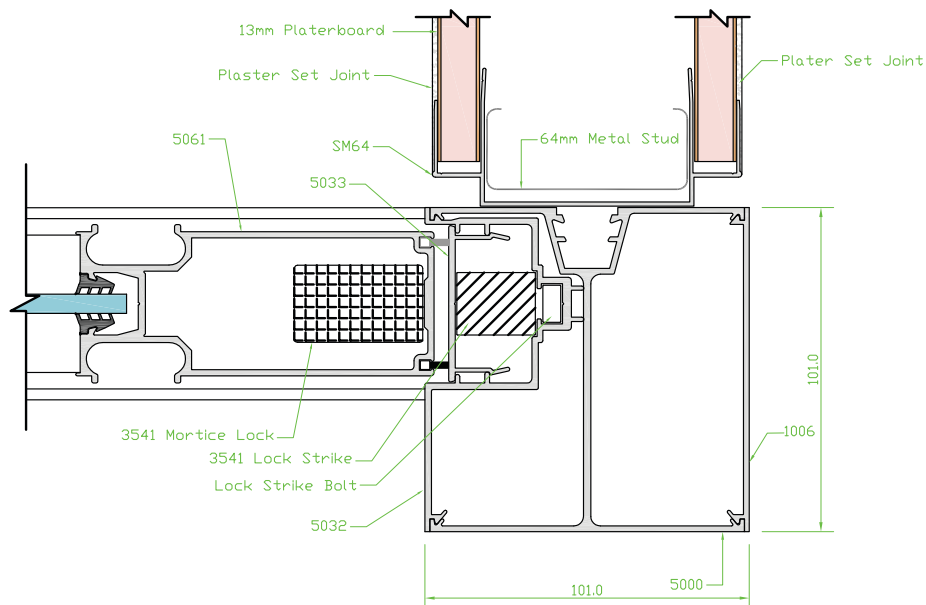
Colour Legends

- Aluminium Partition (face and section)
- Steel Stud
- Plasterboard Profile

SLIDING DOOR CONSTRUCTION DETAILS

Detail 2C | Horizontal Detail of Corner Post and Plasterboard Wall Intersection for Sliding Doors

Sliding door externally



Sliding door internally

ALUMINIUM SLIDING DOOR SYSTEM

Technical cross-section diagram of a window assembly. The diagram shows the window frame, glazing, and surrounding structure. Key components and dimensions are labeled:

- Ceiling Line**: Indicated by a green arrow pointing to the top edge of the window frame.
- 5030**: Label pointing to the top part of the window frame.
- 5001**: Label pointing to the upper part of the window frame.
- Glazing Wedge**: Label pointing to the wedge used to secure the glass in the frame.
- 10mm Glass**: Label pointing to the glass pane.
- 5020B**: Label pointing to the lower part of the window frame.
- 5020A**: Label pointing to the bottom part of the window frame.
- 5003**: Label pointing to the lower part of the window frame.
- 5002**: Label pointing to the bottom part of the window frame.
- Floor Line**: Indicated by a green arrow pointing to the bottom edge of the window frame.
- Dimensions**:
 - Horizontal dimensions: 41.0 (top and bottom).
 - Vertical dimension: 32.0 (right side).

6mm Glass

Glazing Wedge

5414

5412

107

5022 Stainless Steel Roller

5020A

5020B

10 mm Glass

5003

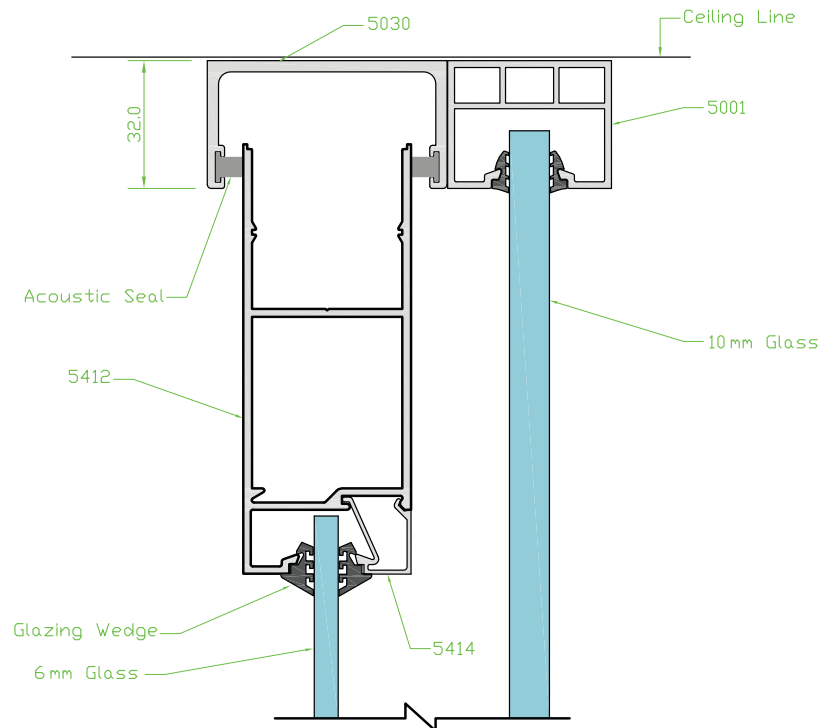
5002

Floor Line

Aluminium Partition (face and section) Steel Stud Plasterboard Profile

SLIDING DOOR CONSTRUCTION DETAILS

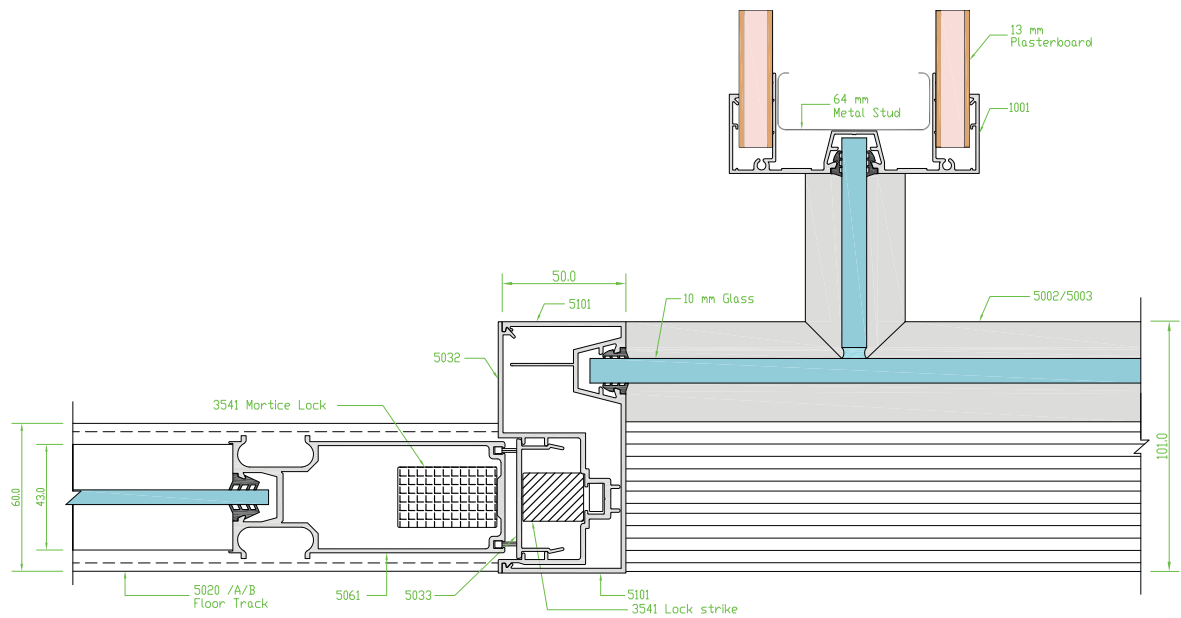
Detail 2F | Vertical Detail of Sliding Door in Head Track



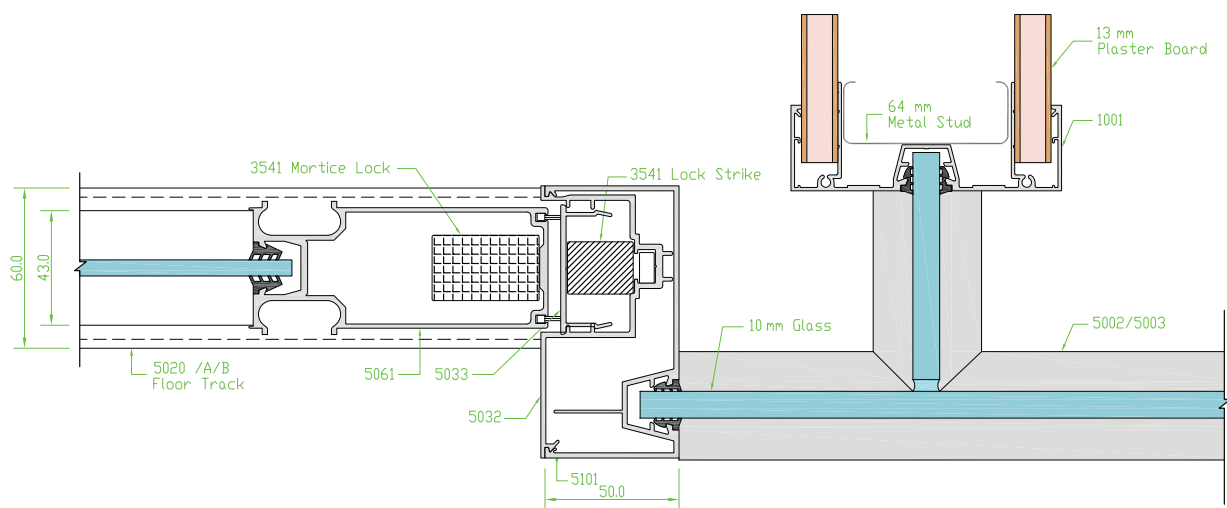
METINNO® 5000 Series

ALUMINIUM SLIDING DOOR SYSTEM

Detail 2G | Horizontal Detail of Section 5101 Used in Conjunction with Mitre Joints for Sliding Doors



Sliding door externally



Sliding door internally

Colour Legends

Aluminium Partition (face and section) Steel Stud Plasterboard Profile

Technical drawings of the 5000 Series fire-rated door assembly, showing side elevation and cross-section views.

Side Elevation View (Left):

- 3541 Mortice Lock
- 3541 Lock Strike
- 5020 A/B Floor Track
- 5061
- 5033
- 5032
- 5101 50.0
- 5002/5003

Cross-Section View (Right):

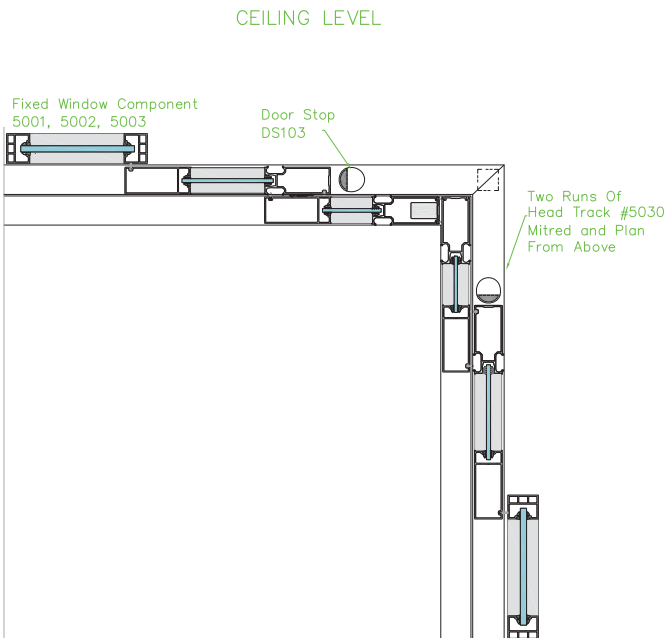
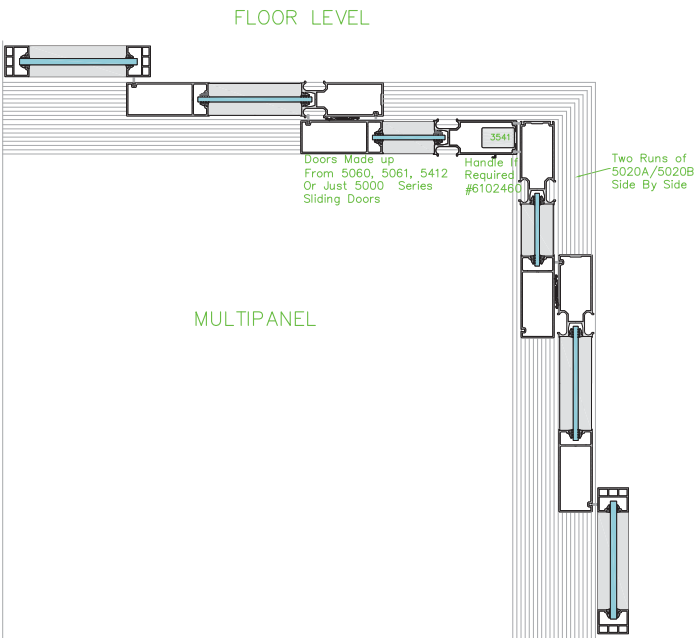
- 13mm Plasterboard
- 64mm Metal Stud
- 1001
- 5002/5003
- 5004
- 1006 101.0
- 5000

[illegible]

METINNO® 5000 Series

ALUMINIUM SLIDING DOOR SYSTEM

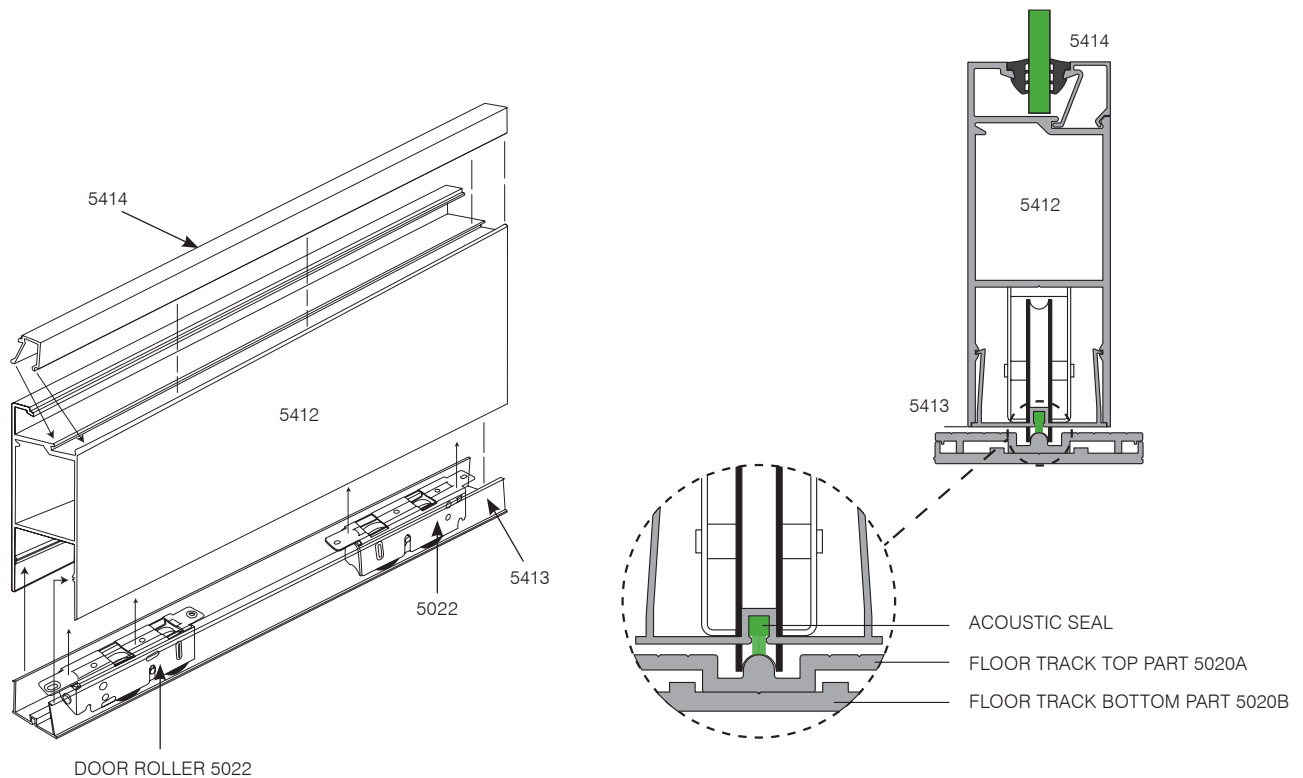
Detail 5 | Horizontal Detail for Multipanel Doors to Open Up Rooms



Colour Legends

- Aluminium Partition (face and section)
- Steel Stud
- Plasterboard Profile

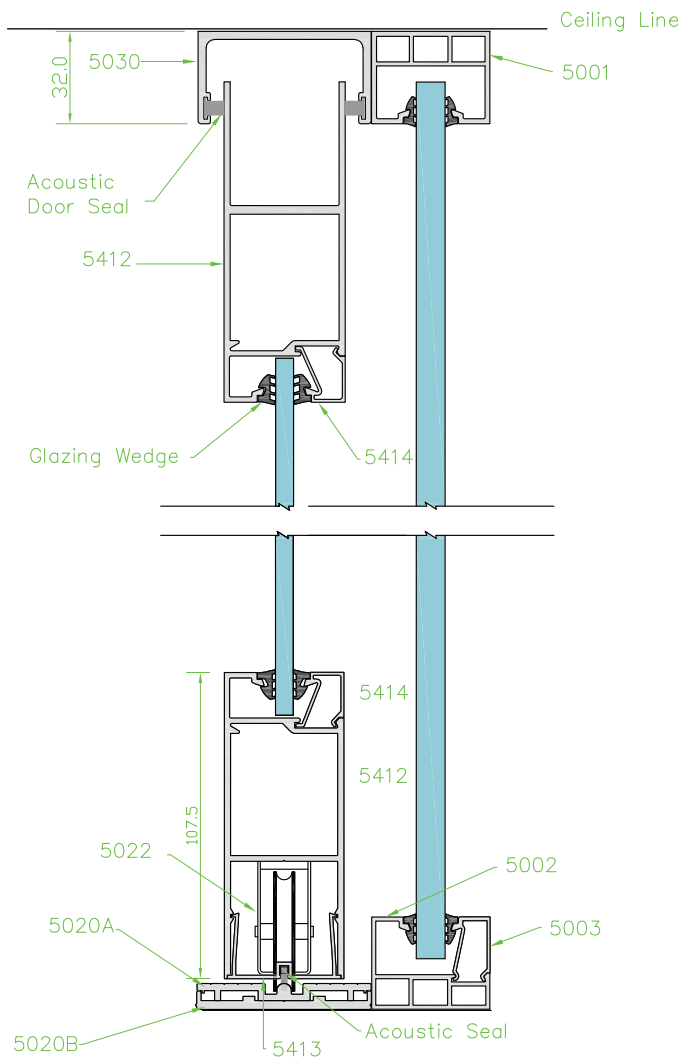
With the acoustic seal in header track and both leading and trailing edge, a significant acoustic value is already achieved. The additional acoustic seal between the base of door and wheel arch of floor track effectively completes the system.



METINNO® 5000 Series

ALUMINIUM SLIDING DOOR SYSTEM

Detail 7 | Vertical Detail of 5000 Door and Main Frame

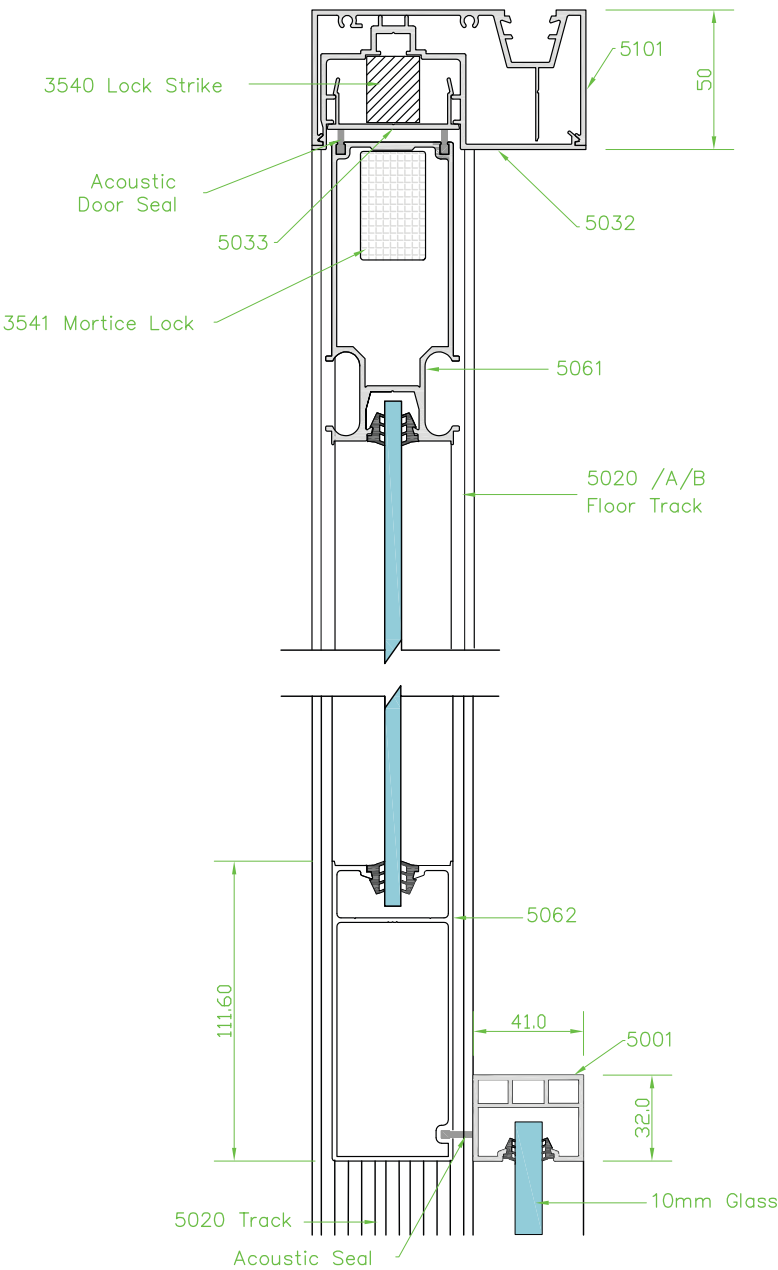


Colour Legends

- Aluminium Partition (face and section)
- Steel Stud
- Plasterboard Profile

SLIDING DOOR CONSTRUCTION DETAILS

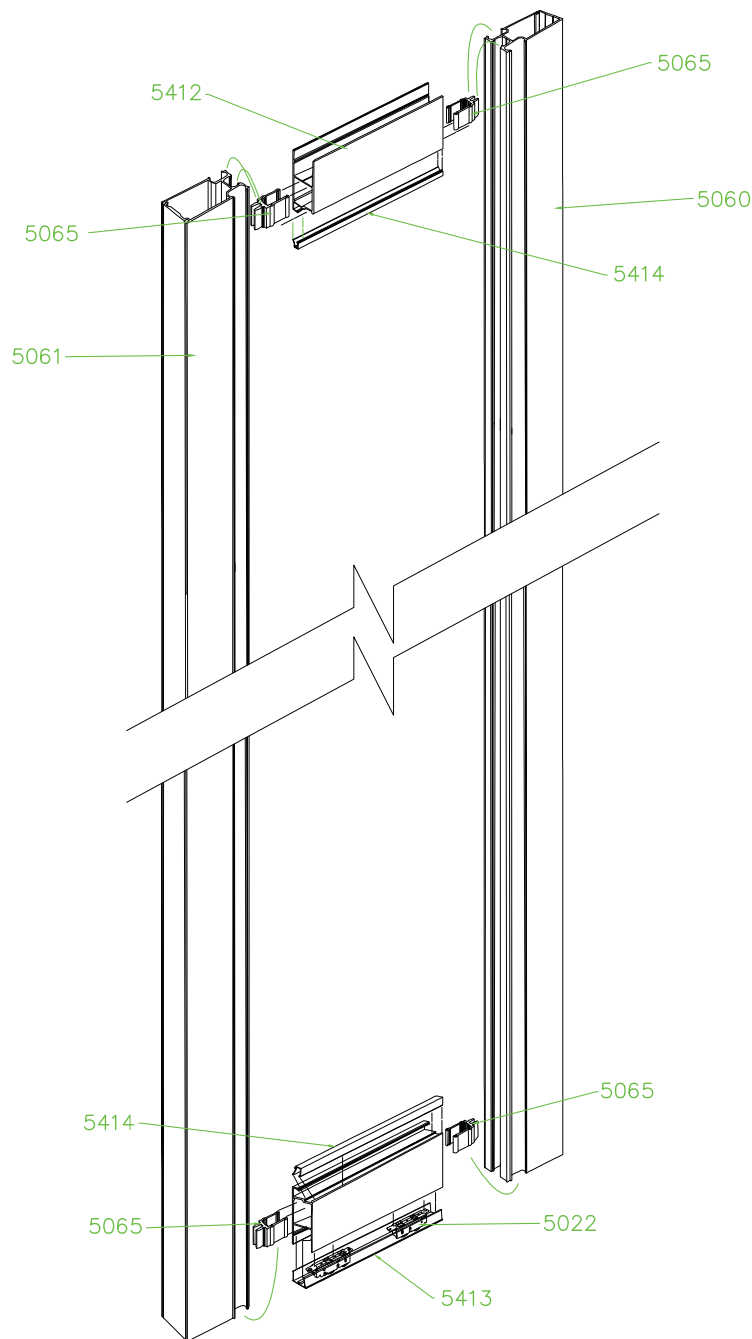
Detail 8 | Horizontal Detail of 5000 Door and Main Frame



METINNO® 5000 Series

ALUMINIUM SLIDING DOOR SYSTEM

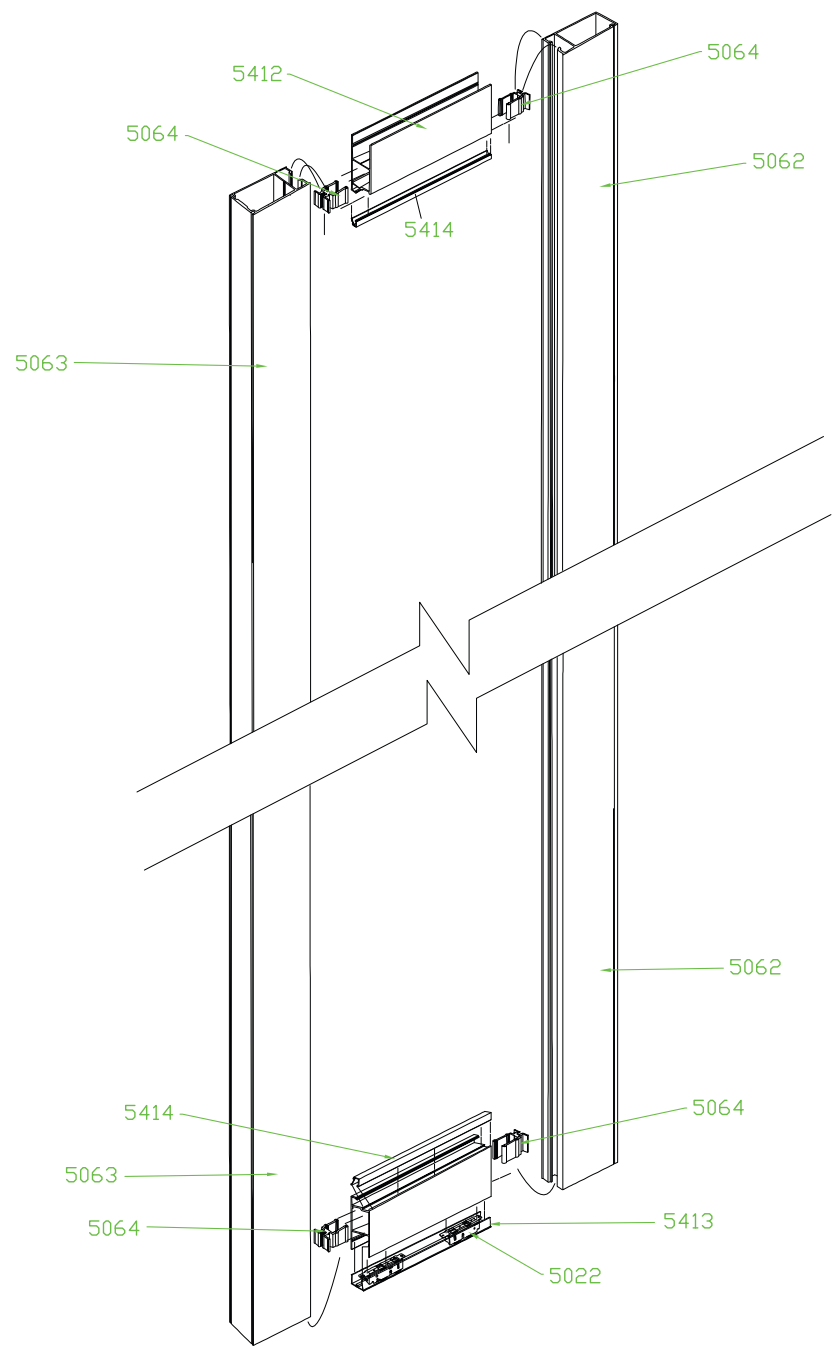
Detail 9 | Exploded View Sliding Door Integrated Handle



Colour Legends

- Aluminium Partition (face and section)
- Steel Stud
- Plasterboard Profile

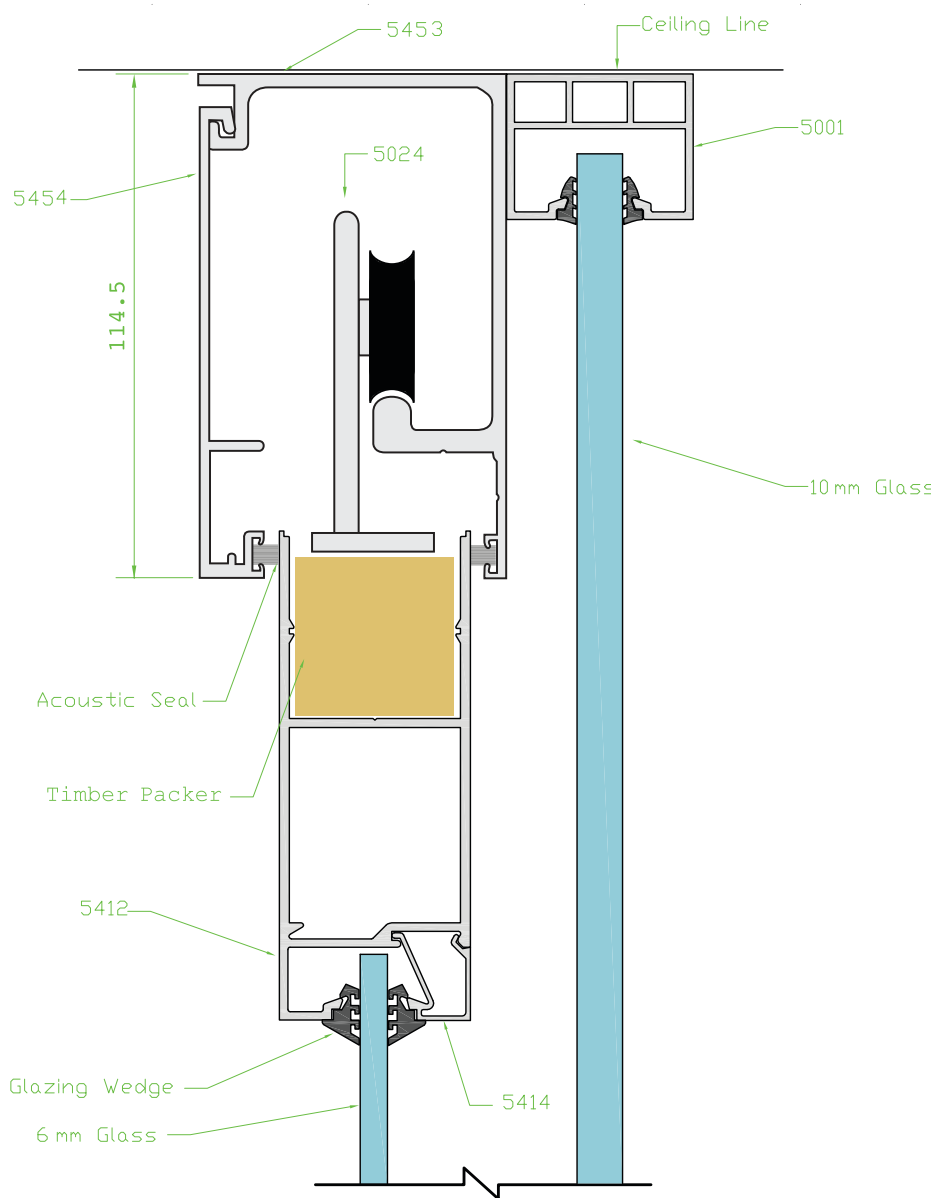
Detail 10 | Exploded View Sliding Door Plain Stile



METINNO® 5000 Series

ALUMINIUM SLIDING DOOR SYSTEM

Detail 11A | Top Hung Vertical Detail of Heavy Duty Track, Pelmet & Roller

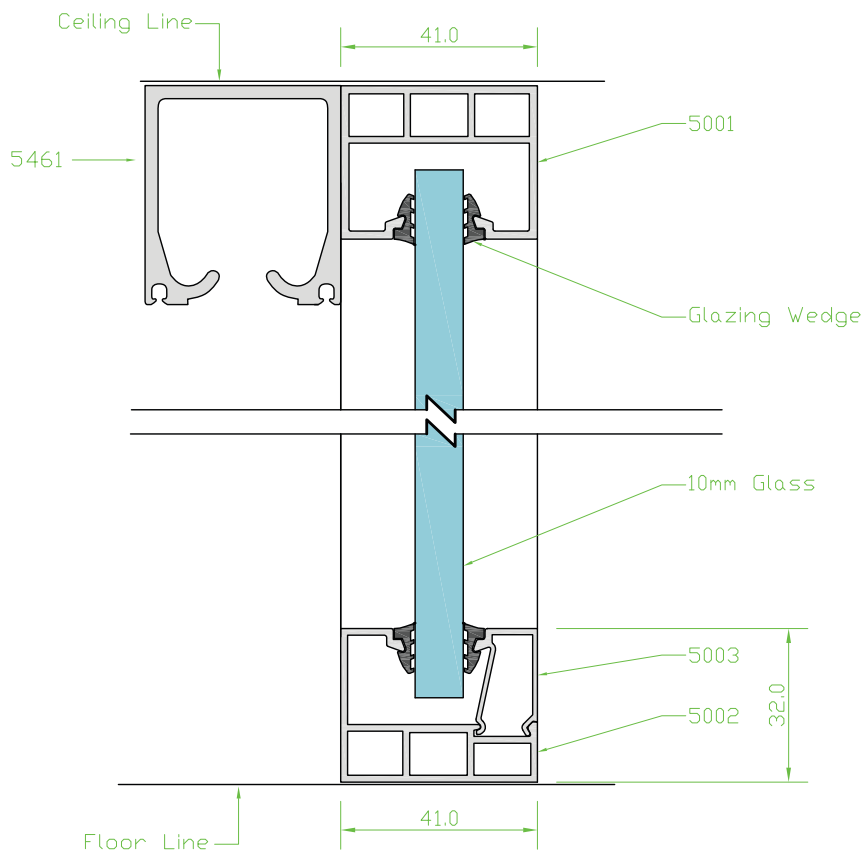


Colour Legends

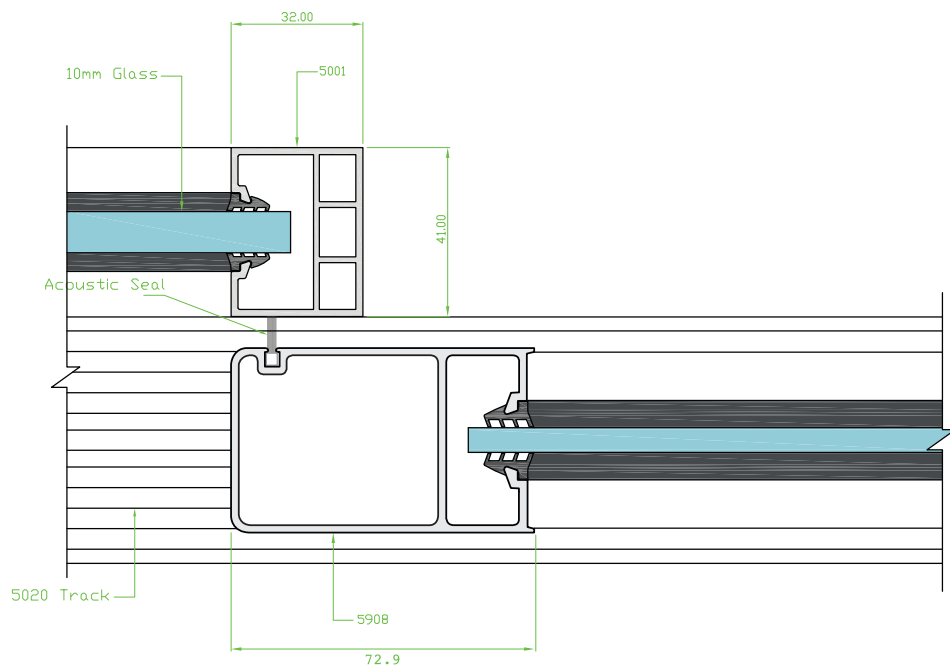
- Aluminium Partition (face and section)
- Steel Stud
- Plasterboard Profile

SLIDING DOOR CONSTRUCTION DETAILS

Detail 11B | Top Hung Vertical Detail of Light Duty Track



Detail 11C | Top Hung Horizontal Detail of Narrow Stile Side Seal



■ Glass ■ Door ■ Glazing Wedge Elevation View ■ Glazing Wedge Profile ■ Silicone Joint ■ Timber Stud