

METINNO®

ShadowMax® Systems

The Metinno ShadowMax products have been designed to guarantee a consistent shadowline finish accompanied with simple and efficient installation.

The ShadowMax range was designed and developed to include a wide variety of products that would create a straight and clearly defined shadowline for several popular applications accompanied with a streamlined installation process compared to conventional methods.

Features and Benefits:

- Saves time and money by reducing installation steps.
- Guaranteed perfect shadow line finish every time.
- No movement or cracking along shadowlines.
- Simple & efficient installation.
- Simplifies the painting process.



METINNO®

ShadowMax® Ceilings

- Creates a perfect, consistent 10mm shadowline
- Structurally stronger and rigid system
- Eliminates the need of stapling bead
- Reduces installation time
- Aluminium gives a sharper & consistent finish
- Excellent for creating easy bulkhead option



Seamless shadowline for stylish ceilings

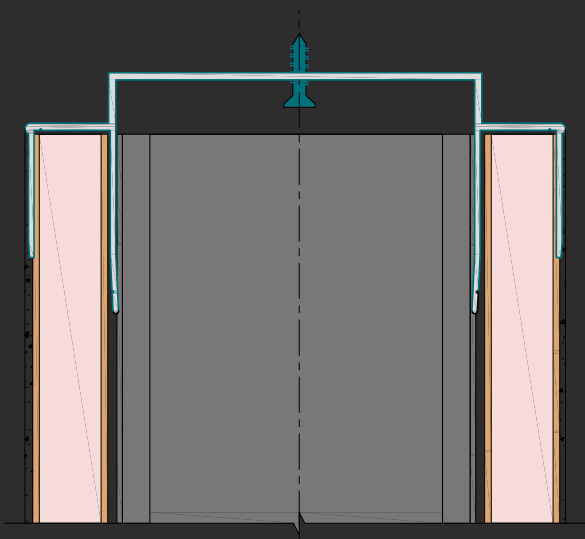
Designed to cut installation time where a shadowline is required at ceiling level, ShadowMax flush ceiling channel and furring channel track reduces installation steps and guarantees a perfect shadowline every time.

With its one-piece aluminium design, the need to staple shadowline bead up is eliminated ensuring a structurally stronger and rigid system. For one or both sides of internal walls at ceiling level, ShadowMax ceiling sections achieve much sharper and consistent shadowlines.



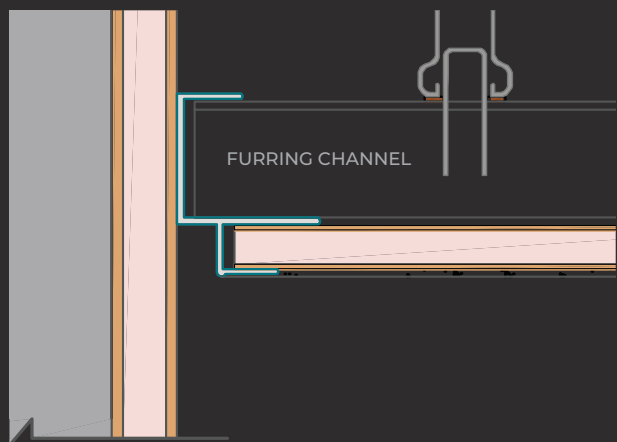
Flush Ceiling Channel

Has fins for combining the ceiling track, MDF packer and stopping bead on two sides.



Furring Channel Track

Minimal fixing points, and has fins for combining furring channel track with stopping bead.

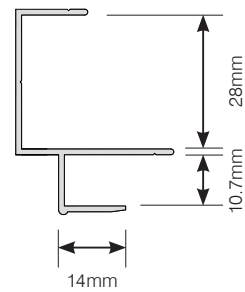




SM10 | 10mm Shadowmax Furring Channel Track

The SM10 profile has been designed to reduce installation time where a shadowline is required at ceiling level when using 10mm plasterboard.

- Allows for 10mm plasterboard.
- Combines the Furring Channel Track with the 10mm Stopping Bead in 1 profile.
- Eliminates the need of stapling shadowline bead up.
- Reduces installation time.
- Made of aluminium to give the shadow line a much sharper and consistent effect.

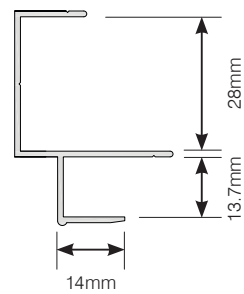


Section	Natural Anodised Available Length (m)	Mill Finish Available Length (m)
SM10	-	3.6

SM13 | 13mm Shadowmax Furring Channel Track

The SM13 profile has been designed to reduce installation time where a shadowline is required at ceiling level when using 13mm plasterboard.

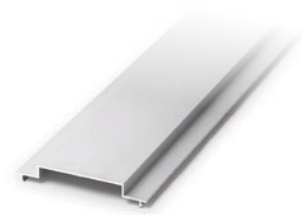
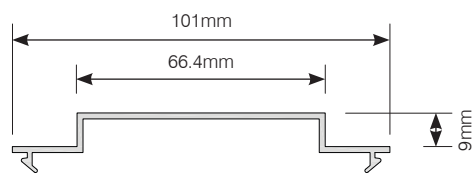
- Allows for 13mm plasterboard.
- Combines the Furring Channel Track with the Stopping Bead in 1 profile.
- Eliminates the need of stapling shadowline bead up.
- Reduces installation time.
- Made of aluminium to give the shadowline a much sharper and consistent effect.



Section	Natural Anodised Available Length (m)	Mill Finish Available Length (m)
SM13	-	3.6

1017 | Shadowline Ceiling Adaptor

- Incorporates a shadowline.
- Easy installation.
- Enhances acoustic qualities when clipped into the back of the Main Frames.

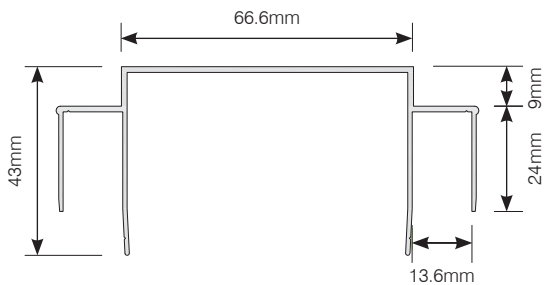
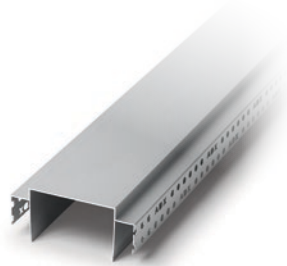


Section	Natural Anodised Available Length (m)	Mill Finish Available Length (m)	Connects With
1017	2.8	-	1000, 1000DP, 1001, 1009, 2000, 2000D, 5101, 5201

SM64 | Shadowmax Flush Ceiling Channel

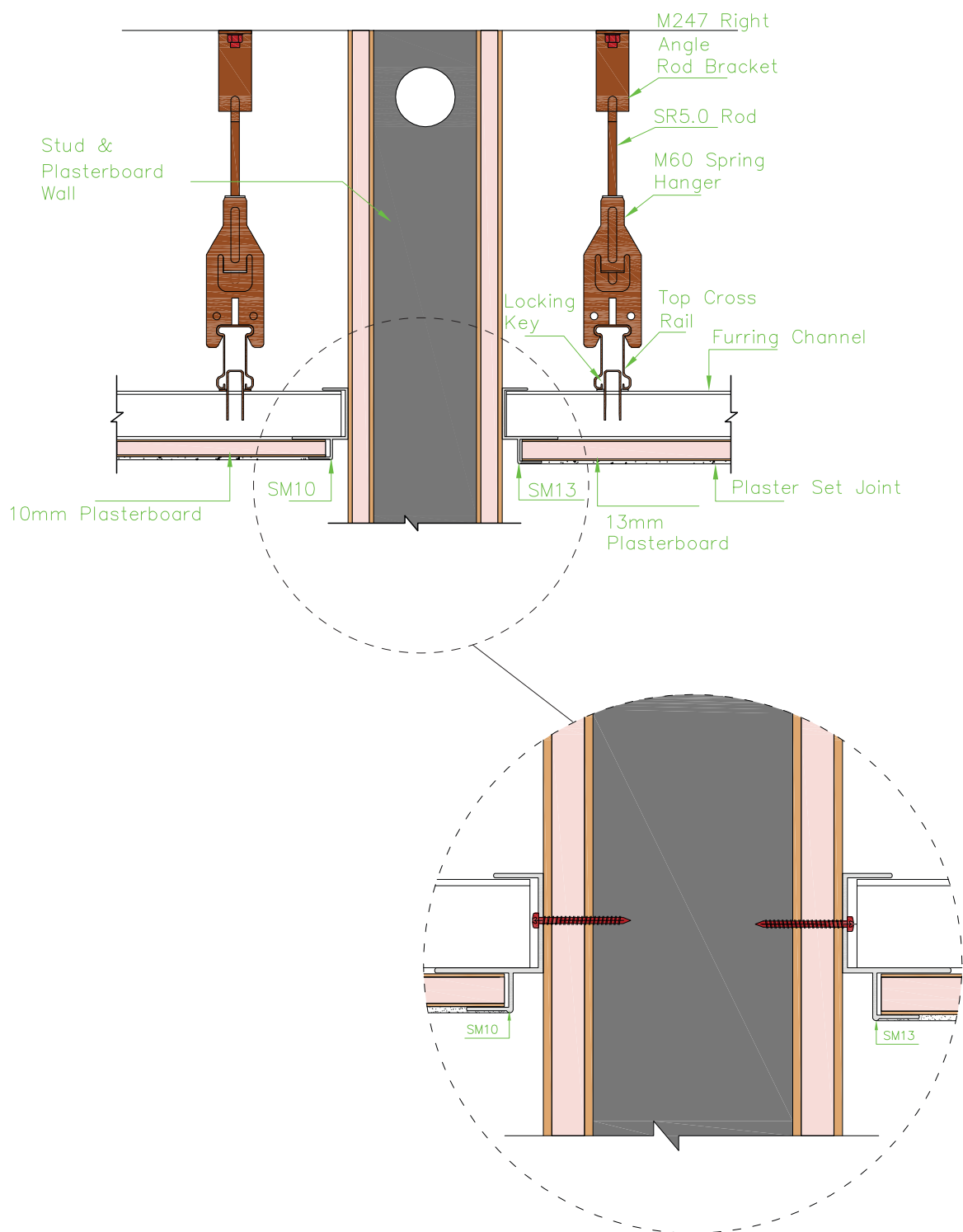
The SM64 profile has been designed to reduce installation time where a shadowline is required on both sides of an internal wall at ceiling level when using 64mm stud and 13mm plasterboard.

- Allows for 64mm stud with a layer of 13mm plasterboard each side.
- Combines the ceiling track, MDF packer and 10mm Stopping Bead either side with use of 1 profile.
- Structurally stronger and rigid system.
- Eliminates the need of stapling shadowline bead up.
- Reduces installation time.
- Made of aluminium to give the shadowline a much sharper and consistent effect.



Section	Natural Anodised Available Length (m)	Mill Finish Available Length (m)
SM64	-	3.6

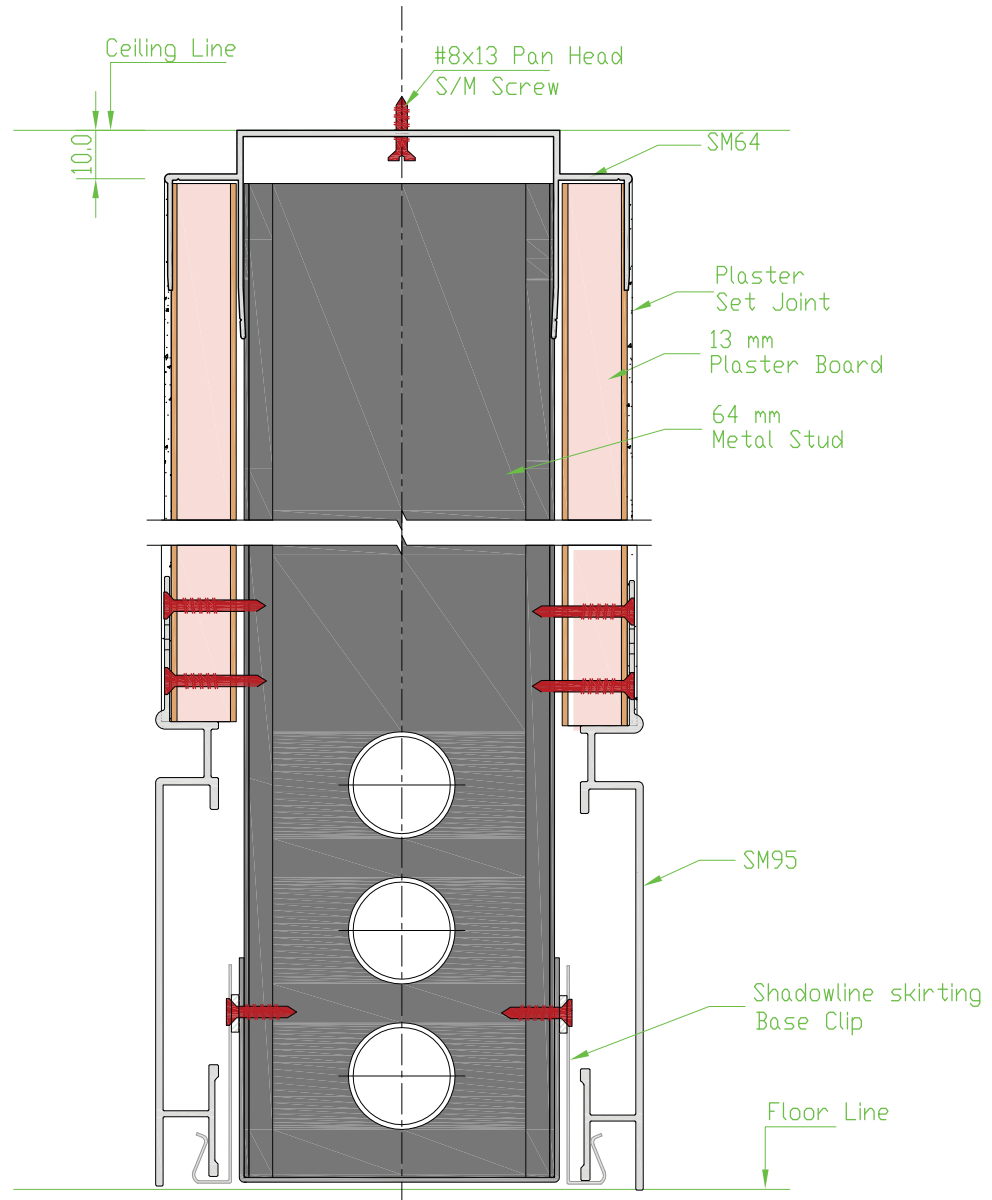
Detail 1 | Vertical Section Drawing of SM10 & SM13 in Suspended Ceiling



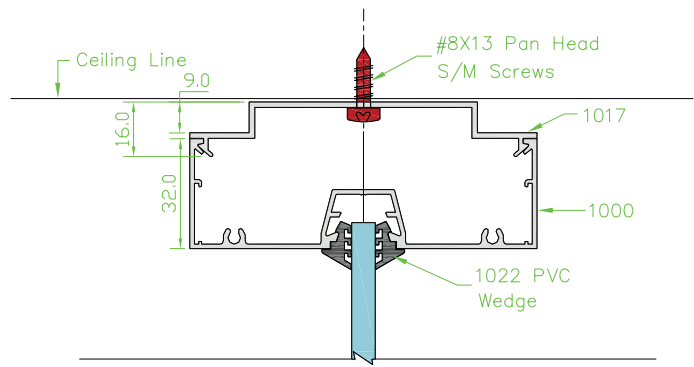
Colour Legends

- Aluminium Partition (face and section)
- Steel Stud
- Plasterboard Profile

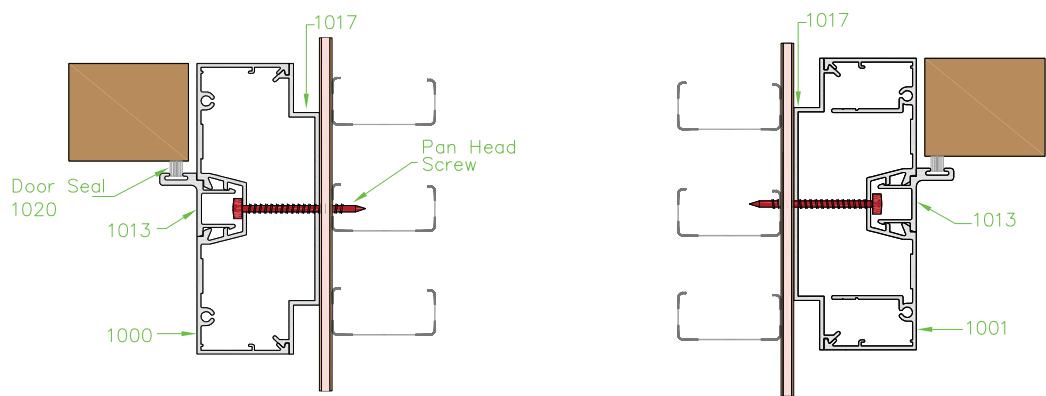
Detail 2 | Vertical Section Drawing of SM64 Shadowmax Detail at Ceiling



Detail 5 | Vertical Section Drawing of 1017 at Ceiling



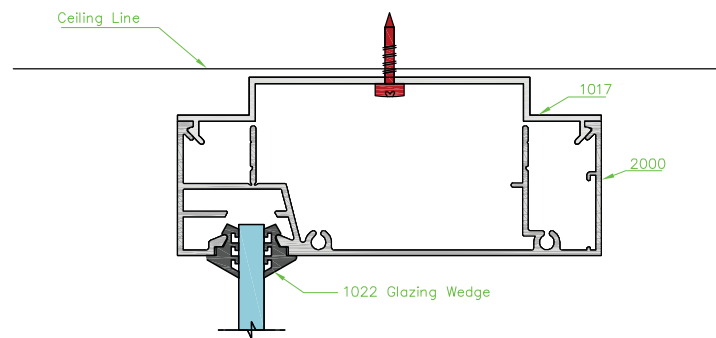
Detail 6 | Horizontal Section Drawing of 1017 at Wall with Either 1000 or 1001



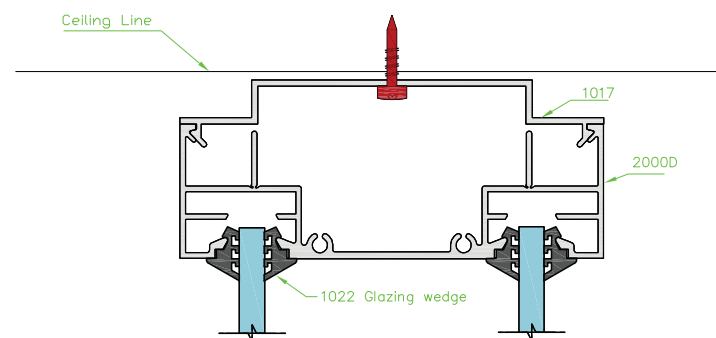
Colour Legends

- Aluminium Partition (face and section)
- Steel Stud
- Plasterboard Profile

Detail 7 | Vertical Section Drawing of 1017 Used with Glazing Section at Ceiling

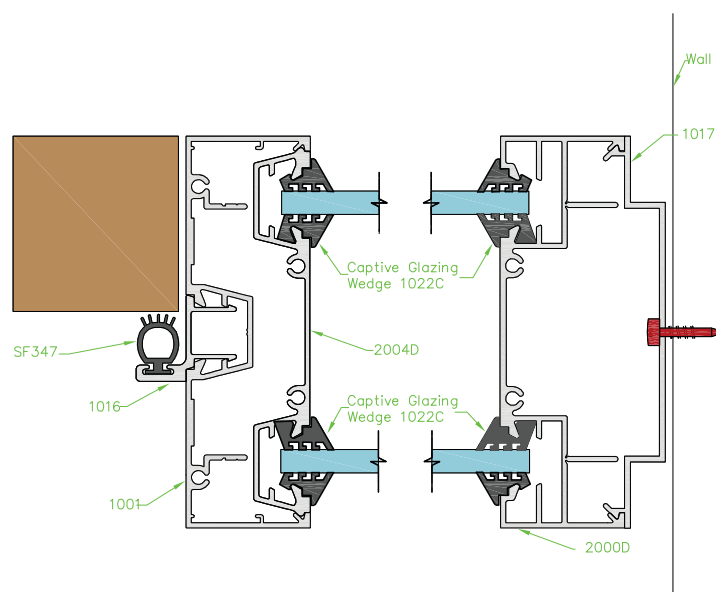


With single glass partition



With double glass partition

Detail 8 | Horizontal Section Drawing of 1017 Used with Glazing Section at Wall





MAKING SPACE USEFUL

METINNO®

ShadowMax® Door Frame

- Creates a 10mm shadowline flush to the wall
- One-piece design ensures strength
- Gives a consistent line that is straight and true
- Simple and easy installation
- Single or double sided solution available
- Works in conjunction with Metinno aluminium door frames



Frame doors with perfect parallel lines

Achieving modern shadowlines around door frames has never been easier! With it's one-piece design, the ShadowMax Door Jamb Adaptor reduces installation time where a shadowline is required around door jambs on both sides when using 64mm stud and 13mm plasterboard. It is also perfect to use in conjunction with the Metinno 1000 series aluminium door frames.

The aluminium section combines the MDF packer and 10mm stopping bead in one profile eliminating the need to staple shadowline bead.

Made from aluminium, the section provides a sharper and consistent shadowline effect.

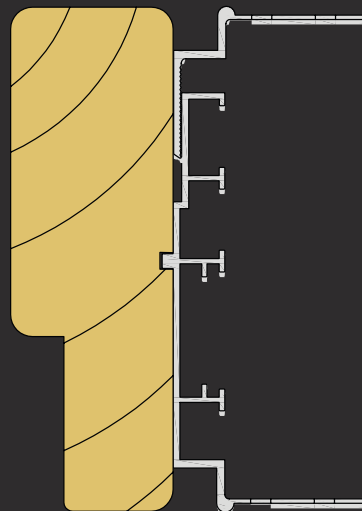
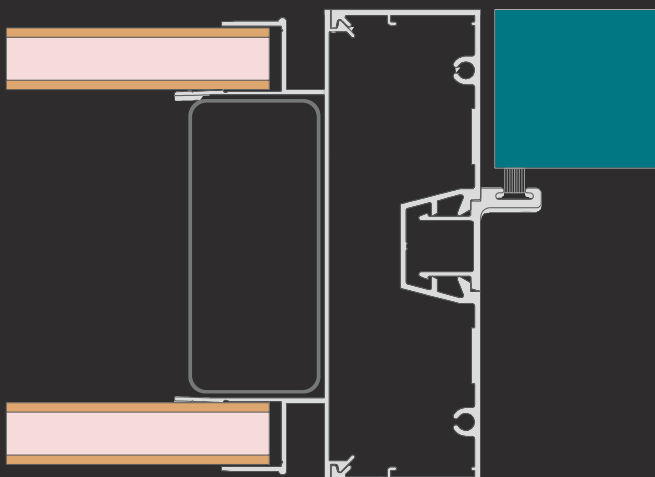
If a shadowline is only required on one side of a door frame, the ShadowMax Single Rebate Timber Jamb is the ideal solution. Supplied with shadowline trims attached to the timber jamb, this product ensures shadowlines are constructed defect free. It is available with a concealed hinge system with three-way adjustment.

Door Jamb Adaptor

- Allows for 13mm Plasterboard
- Eliminates the need for MDF packer and stopping beads
- Eliminates the need of stapling shadowline
- Reduces installation time
- Used in conjunction with Metinno 1000 system aluminium door frames
- Made of aluminium to give the shadowline a much sharper and consistent finish

Single Rebate Timber Jamb

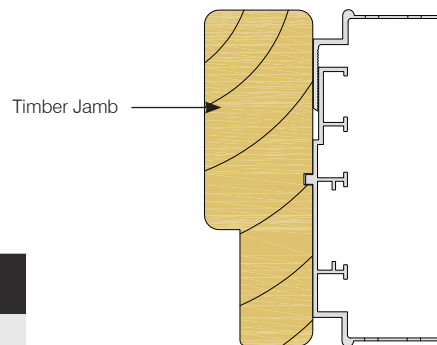
- Supplied with shadowline trims attached to timber jamb
- Single rebate design jamb
- Perfect shadowlines every time
- Also available with hinge system that is totally concealed



SMRTJ | Shadowmax Single Rebate Timber Jamb

- Supplied with shadowline trims attached to timber jamb.
- Single rebate design jamb.
- Perfect shadow lines every time.
- Also available with hinge system that is totally concealed.

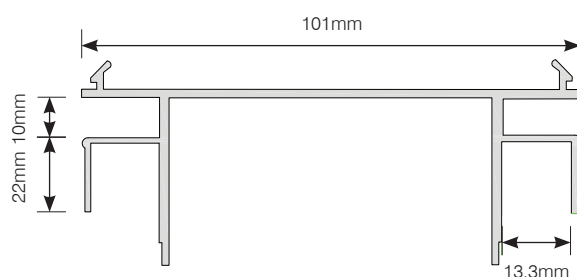
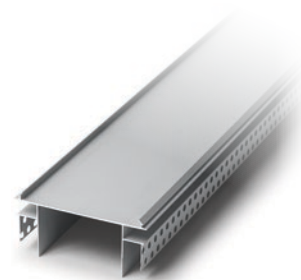
Section	Available Finish
SMRTJ	Finger Jointed Pine/Aluminium



SM64DJA | Shadowmax Door Jamb Adaptor

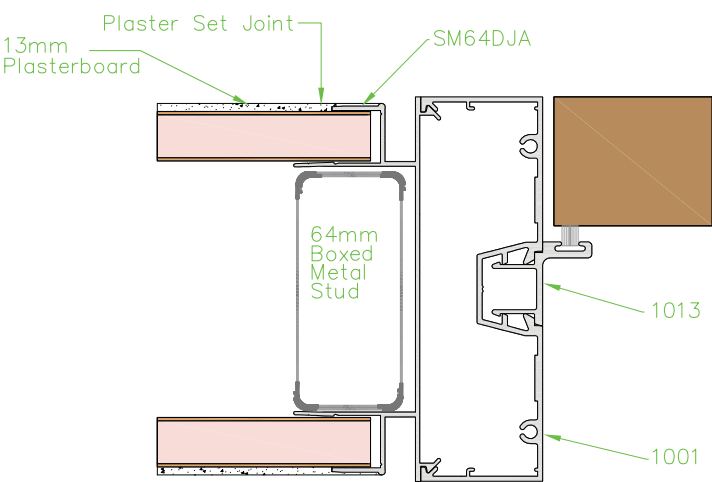
The SM64DJA profile has been designed to reduce installation time where a shadowline is required around aluminium door frames when using 64mm stud and 13mm plasterboard.

- Allows for 13mm plasterboard.
- Combines the MDF packer and 10mm Stopping Bead in 1 profile.
- Eliminates the need of stapling shadowline bead up.
- Reduces installation time.
- Used in conjunction with Metinno 1000 aluminium door frames.
- Made of aluminium to give the shadowline a much sharper and consistent finish.

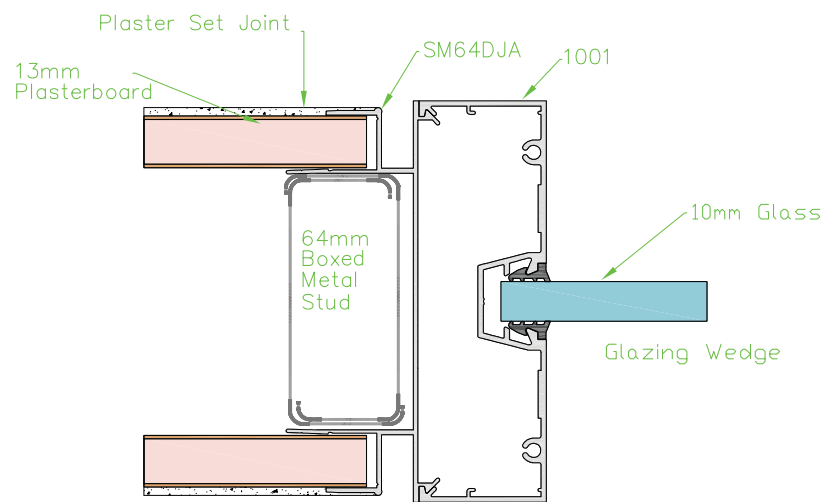


Section	Natural Anodised Available Length (m)	Mill Finish Available Length (m)
SM64DJA	2.8	-

Detail 3 | Horizontal Section Drawing of Shadowmax SM64DJA



Attached to aluminium doors

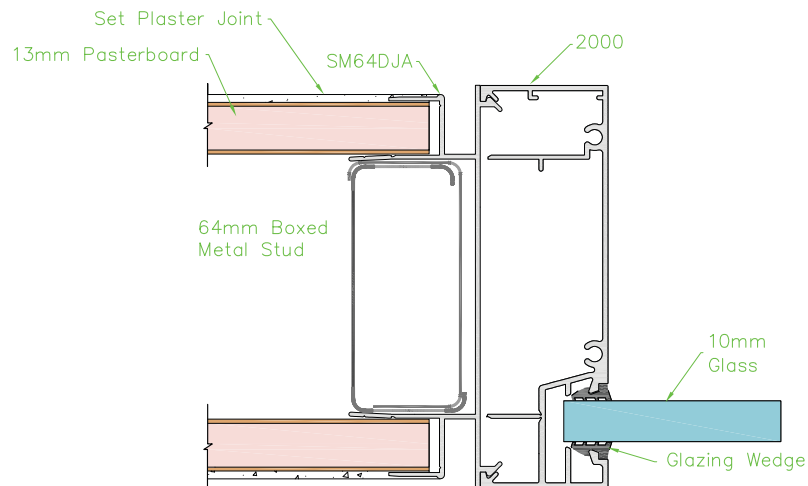


Attached to aluminium window frames

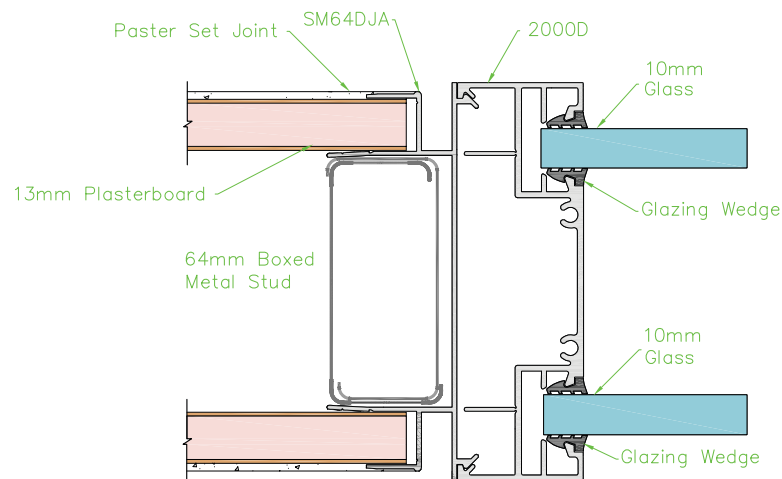
Colour Legends

- Aluminium Partition (face and section)
- Steel Stud
- Plasterboard Profile

Detail 4 | Section Drawing of SM64DJA with Glazing Section in Stud and Plasterboard Wall



With single glass partition



With double glass partition



MAKING SPACE USEFUL

METINNO®

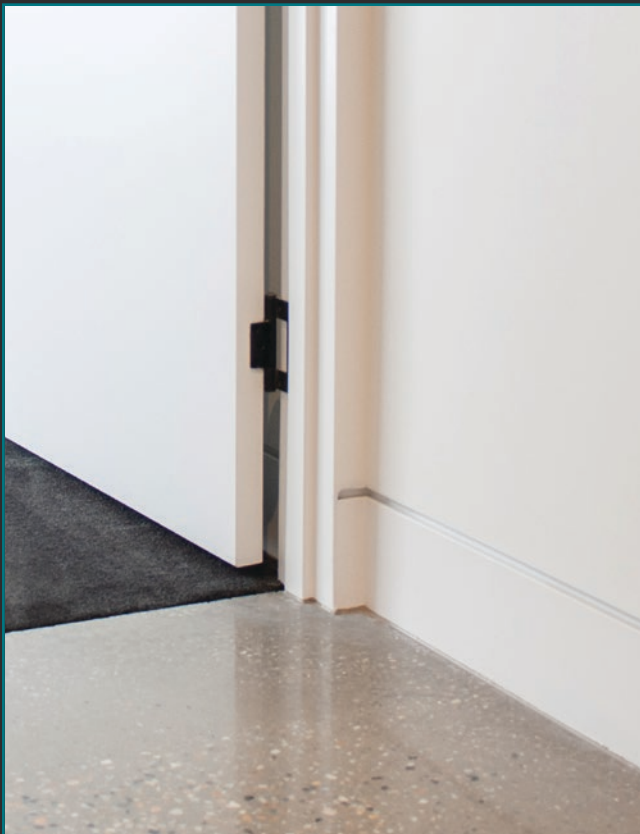
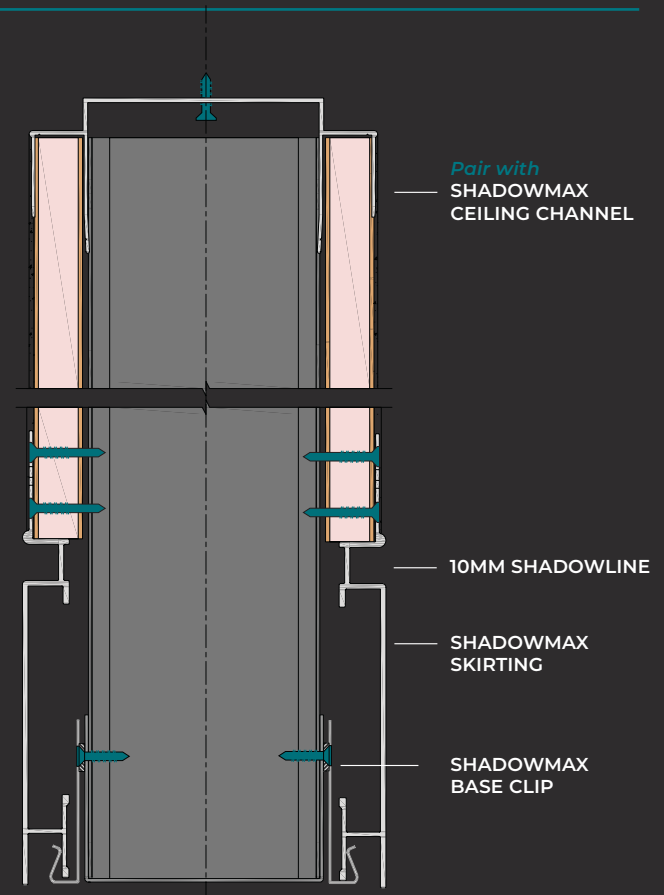
ShadowMax® Skirting

- Creates a 10mm shadowline flush to the wall
- Gives a consistent line that is straight and true
- Simple and easy installation
- System includes joiners and clips
- Chromated surface ready for painting
- Designed to compliment the ShadowMax Jamb



Contemporary skirting that achieves clean shadowlines

Metinno ShadowMax products have been designed to guarantee a consistent shadowline finish accompanied with an easy and efficient installation process. ShadowMax products provide a consistent shadowline system for ceiling, door, skirting and wall intersections. The SM95 and SM135 profiles have been designed to give perfect parallel lines and reduce installation time where a 10mm shadowline is required. The aluminium skirting is used to achieve a modern and contemporary appearance.



ShadowMax® Skirting

One-piece design ensures strength & easy installation

Eliminating the need to use a variety of metal sections and creating a simple installation process, the one-piece design of ShadowMax Skirting meets challenges that existing metal shadowline trims can't fulfill. Achieving strong, consistent lines that are straight and true is guaranteed while installation time is reduced saving money on labour.

ShadowMax Skirting creates a resilient aluminium skirting with a 10mm shadowline that is flush to the wall. The chromated aluminium finish provides a key surface for easy painting. This system is designed to compliment the ShadowMax Door Jamb for a quality finish.

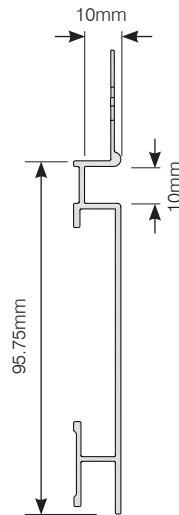


SM95 | 95mm Shadowmax Skirting

The SM95 profile has been designed to give perfect parallel lines and reduce installation time where a 10mm shadowline is required. The aluminium skirting is used to achieve a modern and contemporary appearance.

- Creates a resilient aluminium skirting with a 10mm shadowline that is flush to the wall.
- Meets the challenges that existing metal shadowline trims can't fulfil.
- Gives a consistent line that is straight and true.
- Simple and easy installation.
- System includes: External corner joiners, straight joiners for sections longer than 4800mm and stud clips to secure base firmly.
- Improved end result.
- Chromated to provide key for surface painting.
- Designed to compliment the ShadowMax Jamb.

Section	Mill Finish (Chromated) Available Length (m)
SM95	4.8

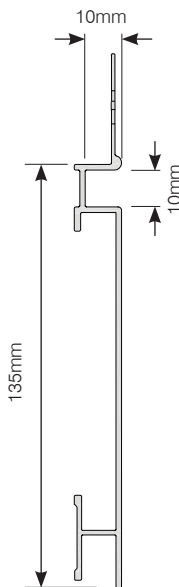


SM135 | 135mm Shadowmax Skirting

The SM135 profile has been designed to give perfect parallel lines and reduce installation time where a 10mm shadowline is required. The aluminium skirting is used to achieve a modern and contemporary appearance.

- Creates a resilient aluminium skirting with a 10mm shadowline that is flush to the wall.
- Meets the challenges that existing metal shadowline trims can't fulfil.
- Gives a consistent line that is straight and true.
- Simple and easy installation.
- System includes: External corner joiners, straight joiners for sections longer than 4800mm and stud clips to secure base firmly.
- Improved end result.
- Chromated to provide key for surface painting.
- Designed to compliment the ShadowMax Jamb.

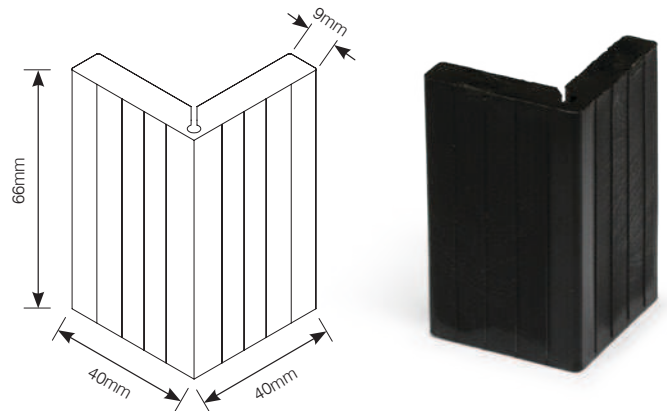
Section	Mill Finish (Chromated) Available Length (m)
SM135	4.8



SMSEJ | Shadowmax Shadowline Skirting External Corner Joiner

- Concealed plastic inserts are used for external corner joining of SM95 skirting.
- Internal corners only require base clips for attachment.

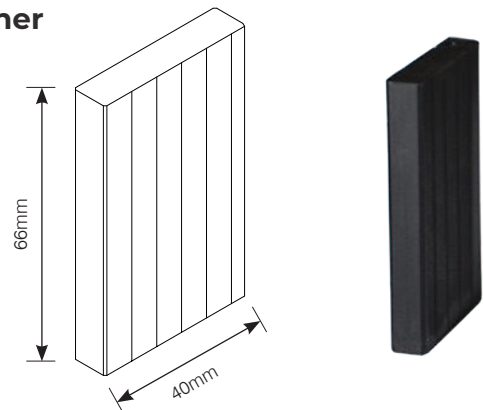
Section	Available Finish
SMSEJ	Black Plastic



SMSFJ | Shadowmax Shadowline Skirting Flat Joiner

- Concealed plastic insert joiners are only required where any section of wall is longer than the 4800mm length that the SM95 is available in.
- Joint is easily finished off by the painter.

Section	Available Finish
SMSFJ	Black Plastic



SMBC10 | Shadowmax Shadowline Skirting Base Clip – Suits 10mm Plasterboard

- Clips are easily screwed to base of every stud.
- Skirting slots into each clip and can then be screwed to wall system through the flushing section.
- Once flushed all fixings completely concealed.

Section	Available Finish
SMBC10	Steel



SMBC13 | Shadowmax Shadowline Skirting Base Clip – Suits 13mm Plasterboard

- Clips are easily screwed to base of every stud.
- Skirting slots into each clip and can then be screwed to wall system through the flushing section.
- Once flushed all fixings completely concealed.

Section	Available Finish
SMBC13	Steel

