

METINNO®

Cavity Sliding Door Systems

The Metinno Cavity Sliding Door Systems offer a range of quality and innovative products suitable for either residential or commercial applications.

Quality and design are first priority with a guaranteed high level of finish to ensure each and every cavity sliding door unit continues to work smoothly and effortlessly. Doors are supplied separate to the unit but are available for a fully compatible system.

Features and Benefits:

- Space saving design.
- Quick install.
- Short lead times.
- Custom made to suit your needs.
- No pelmets.
- Focus on elegant clean sharp lines.
- Option of timber, aluminium or frameless glass doors.
- Unique concealed carriage system.
- Guaranteed quality.
- High load bearing.
- Door cannot derail from track in cavity.



METINNO®

Cavity Sliding Door Systems

Premium cavity systems guaranteed to style
& work effortlessly within any space





METINNO® Archiline

Cavity Sliding Door System

Create continuity by using the same architraves throughout the project

Metinno Archiline provides complete unit ready for installer to add the architraves that are being used throughout the project. With high load-bearing mechanisms ideal for large doors, soft close options and rebated closer options, improving privacy, acoustics and climate control has never been easier.

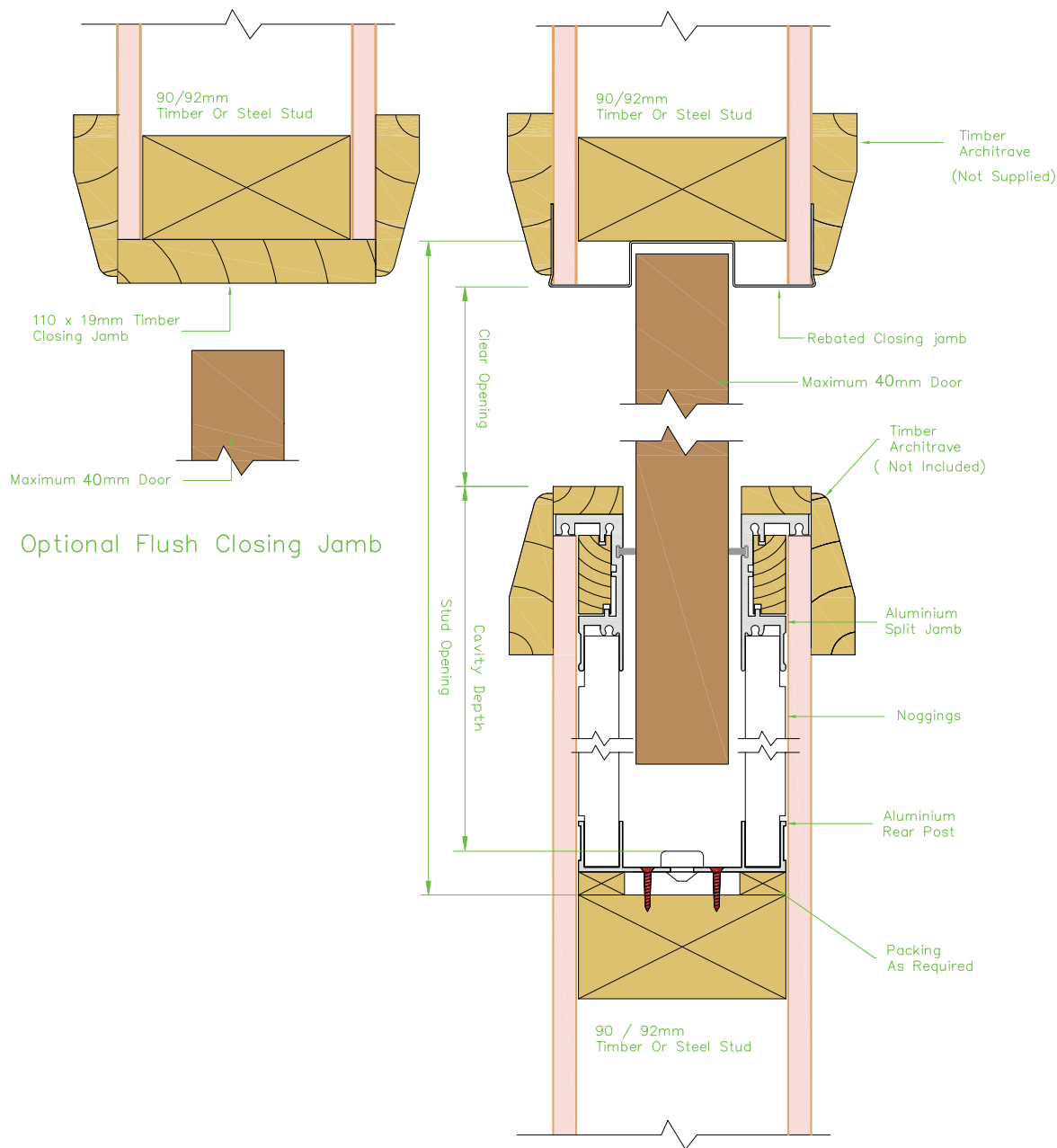
Features & Benefits:

- Robust, ball bearing carriage system.
- High load bearing mechanism ideal for large doors.
- Concealed pocket made with timber slats (easy to fix plasterboard to) with high tensile alloy frames making opening rigid. This feature reduces risk of large doors scraping in opening.
- Soft close option available.
- Rebated closer option improving privacy, acoustics and climate control.
- Frameless glass option – clamps only supplied.
- Full ceiling height option available.

Visible Opening Frame	Cavity Box Construction	Suits Doors up to 40mm (W)	Suits Stud Wall	Max. Door Width	Max. Door Height	Max. Door Weight
Timber Architrave (as supplied by customer) <i>Architrave frame not supplied with unit.</i>	Aluminium frame with timber slats to attach plasterboard	<ul style="list-style-type: none"> • Timber • Frameless Glass <i>Glazing completed on-site by customer</i>	92mm Stud Wall Thickness	2200mm	3000mm	Up to: 65kg (M65) 125kg (M125) 150kg (M150)



Detail 1 | Metinno Archiline Cavity Sliding Door

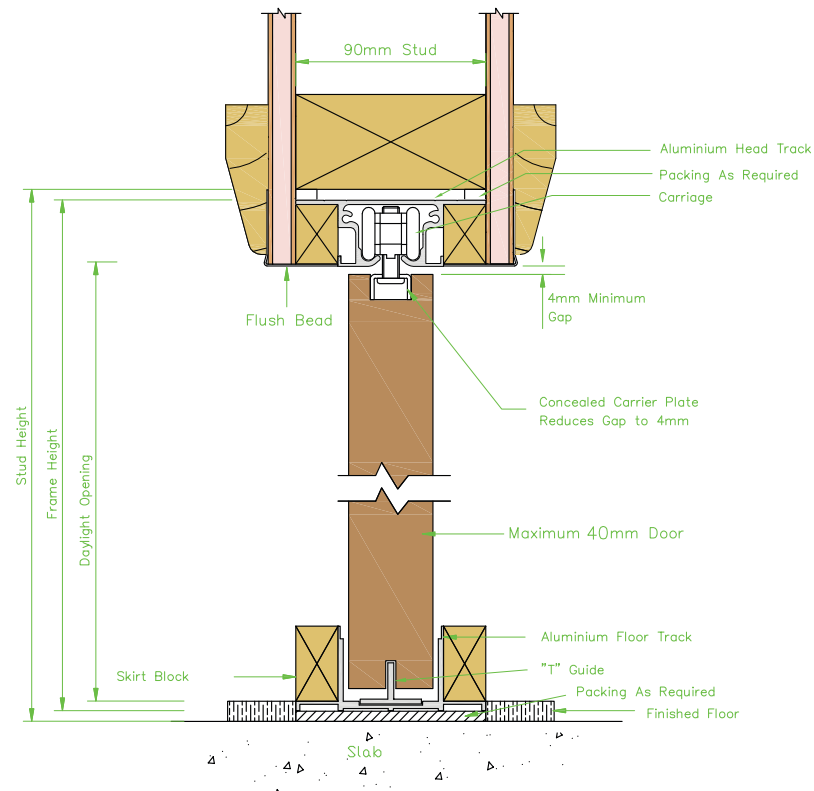


Colour Legends

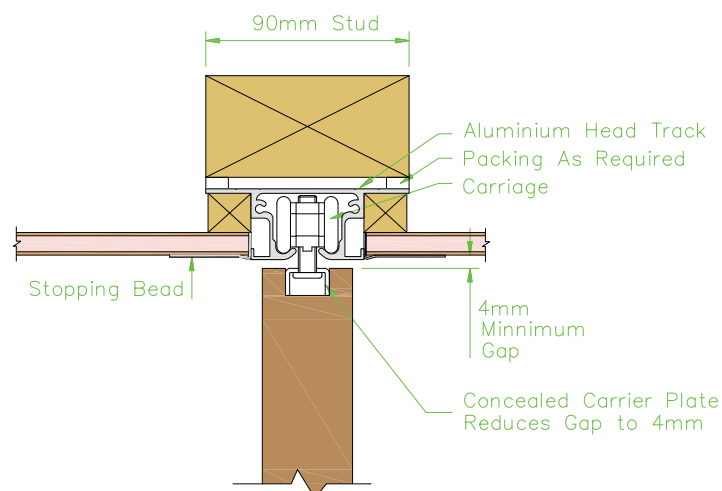
- Aluminium Partition (face and section)
- Steel Stud
- Plasterboard Profile

CAVITY SLIDER CONSTRUCTION DETAILS

Detail 2 | Metinno Archiline Wall Above Detail



Detail 3 | Metinno Archiline Full Height Detail





METINNO® Flushline

Cavity Sliding Door System

Achieve clean sharp lines for the ultimate contemporary fit-out

Metinno Flushline provides a unit with all necessary flushing trims to completely eliminate the need for architraves. The seamless finish of flushed walls allows for a smooth transition between rooms when the sliding door is open while achieving privacy, acoustics and climate control when closed.

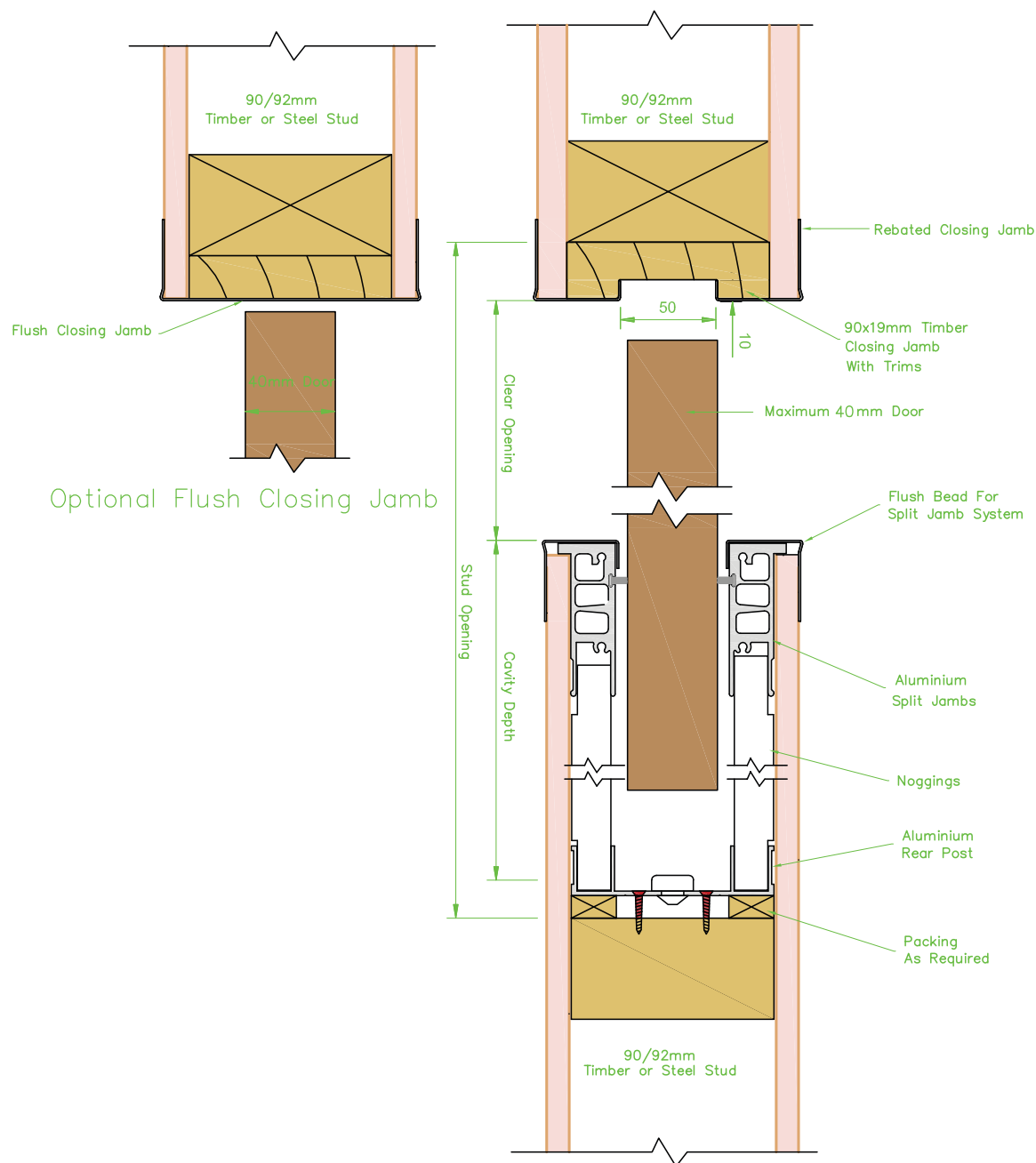
Features & Benefits:

- Elegant clean sharp lines which guarantee the ultimate choice for contemporary fit-out.
- Robust ball bearing carriage system.
- High load bearing mechanism ideal for large doors.
- Rebated closer option improving privacy, acoustics and climate control.
- Frameless glass option – clamps only supplied.
- Soft close option available.
- Concealed pocket made with timber slats (easy to fix plasterboard to) with high tensile alloy frames making opening rigid. This feature reduces risk of large doors scraping in opening.
- Full ceiling height option available.
- Simplifies painting as no timber work requires special finishes.

Visible Opening Frame	Cavity Box Construction	Suits Doors up to 40mm (W)	Suits Stud Wall	Max. Door Width	Max. Door Height	Max. Door Weight
Flush - no visible frame <i>Includes trims & angles ready for installer to flush into wall & frame.</i>	Aluminium frame with timber slats to attach plasterboard	• Timber • Frameless Glass • Corner Meeting <i>Glazing completed on-site by customer.</i>	92mm Stud Wall Thickness	2200mm	3000mm	Up to: 65kg (M65) 125kg (M125) 150kg (M150)



Detail 4 | Metinno Flushline Cavity Sliding Door

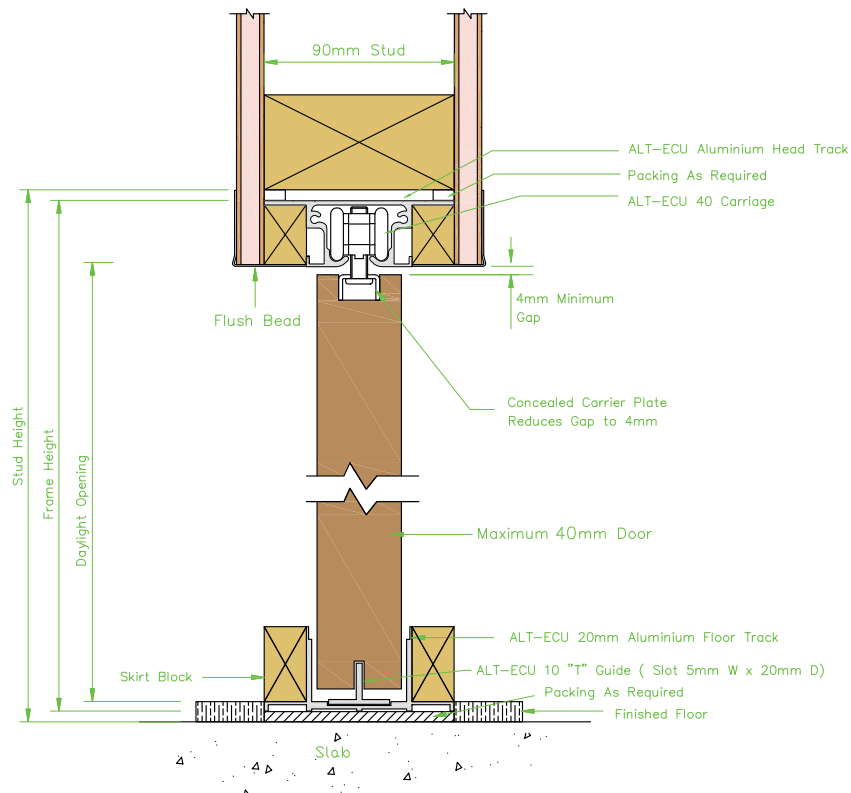


Colour Legends

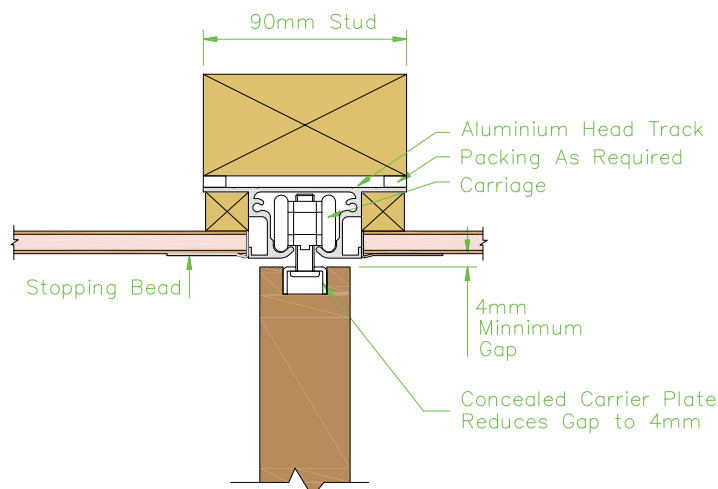
- Aluminium Partition (face and section)
- Steel Stud
- Plasterboard Profile

CAVITY SLIDER CONSTRUCTION DETAILS

Detail 5 | Metinno Flushline Wall Above Detail



Detail 6 | Metinno Flushline Full Height Detail





METINNO® Shadowline

Cavity Sliding Door System

Frame doorways with perfect, parallel shadowlines

Metinno Shadowline provides a unit with a 32mm timber surround to doorway opening and a 10mm shadowline finish to plasterboard. This system creates a sleek, contemporary detail around doorways and seamlessly integrates with ShadowMax Skirting for consistency between spaces.

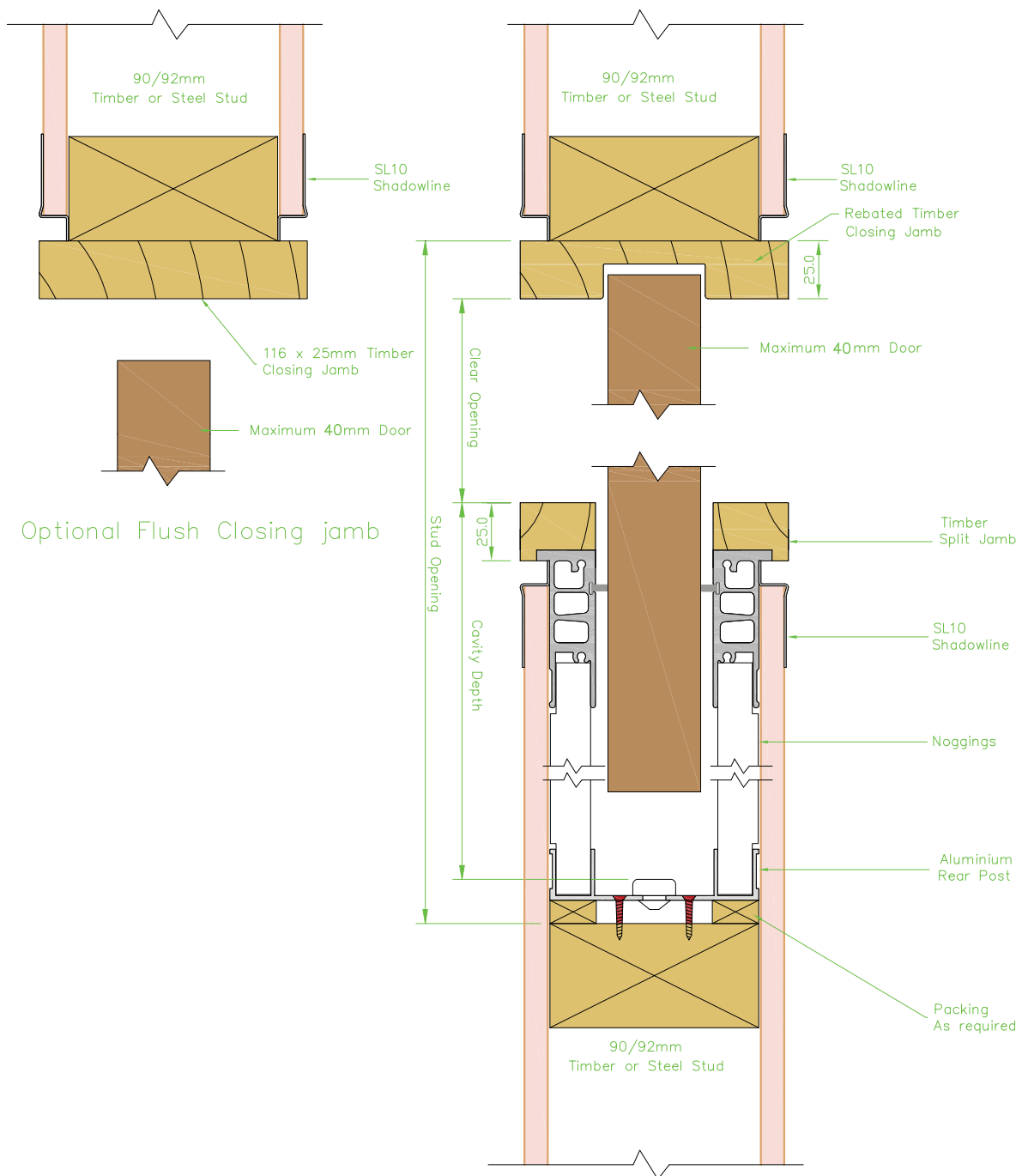
Features & Benefits:

- Elegant clean sharp lines which guarantee the ultimate choice for contemporary fit-out.
- Robust ball bearing carriage system.
- High load bearing mechanism ideal for large doors.
- Provides ability to separate the frame and the wall when painting.
- Rebated closer option improving privacy, acoustics and climate control.
- Concealed pocket made with timber slats (easy to fix plasterboard to) with high tensile alloy frames making opening rigid. This feature reduces risk of large doors scraping in opening.
- Soft close option available.
- Frameless glass option – clamps only supplied.
- Same profile as ShadowMax Jamb. Compliments Metinno ShadowMax Ceiling and Skirting finishes.

Visible Opening Frame	Cavity Box Construction	Suits Doors up to 40mm (W)	Suits Stud Wall	Max. Door Width	Max. Door Height	Max. Door Weight
30mm timber with 10mm shadowline to plasterboard. <i>Shadowline trims not included.</i>	Aluminium frame with timber slats to attach plasterboard	<ul style="list-style-type: none"> • Timber • Frameless Glass <i>Glazing completed on-site by customer.</i>	92mm Stud Wall Thickness	2200mm	3000mm	Up to: 65kg (M65) 125kg (M125) 150kg (M150)



Detail 7 | Metinno Shadowline Cavity Sliding Door

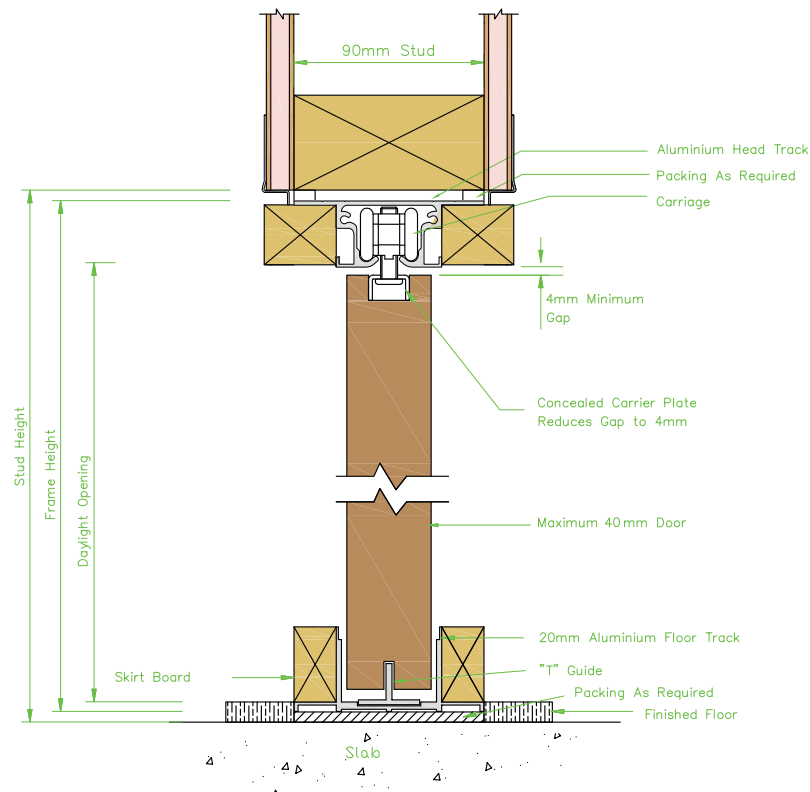


Colour Legends

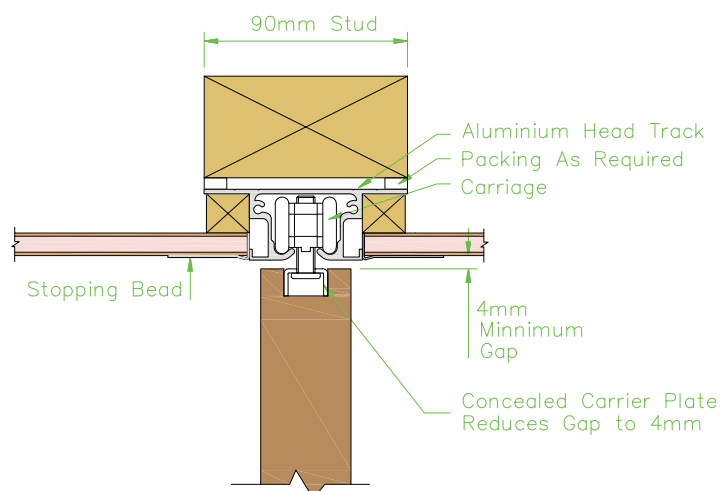
- Aluminium Partition (face and section)
- Steel Stud
- Plasterboard Profile

CAVITY SLIDER CONSTRUCTION DETAILS

Detail 8 | Metinno Shadowline Wall Above Detail



Detail 9 | Metinno Shadowline Full Height Detail





METINNO® Aluminium

Cavity Sliding Door System

A stylish and sturdy space saving solution for office fit-outs

Metinno Aluminium provides a unit with an aluminium surround trim to the doorway opening. If you are using Metinno aluminium partitioning door frames, this unit provides the same 32mm profile therefore maintaining consistency of finish and look throughout the entire project. Aluminium framed sliding doors are available in any anodised or powder coat finish, as well as a large range of timber doors.

Features & Benefits:

- Elegant clean sharp lines which guarantee the ultimate choice for contemporary fit-out.
- Concealed pocket made with timber slats (easy to fix plasterboard to) with high tensile alloy frames making opening rigid. This feature reduces risk of large doors scraping in opening.
- Option available for heavy or large doors using a stronger system.
- Robust ball bearing carriage system.
- Rebated closer improves privacy, acoustics & climate control.
- Metinno 5000 Series glass sliding doors available to suit 92mm steel stud only.
- If aluminium head track exists in room then a full height unit can be integrated to clip into this.
- Also pre-glazed 37mm aluminium framed doors in clear, opaque and translucent glass.

Visible Opening Frame	Cavity Box Construction	Suits Doors up to 45mm (W)	Suits Stud Wall	Max. Door Width	Max. Door Height	Max. Door Weight
Aluminium Frame <i>32mm Profile that integrates with Metinno Aluminium Partitioning Systems</i>	Aluminium frame with timber slats to attach plasterboard	<ul style="list-style-type: none">• Glass Door with Aluminium Frame• Timber Door• Wall above Glass Door with Aluminium Frame <i>Glazing completed on-site by customer.</i>	64 & 92mm Stud Wall Thickness <i>64mm suits timber doors only.</i>	1500mm	2700mm	150kg

ALUMINIUM CAVITY SLIDING DOOR



Option 1 Full height into existing aluminium head track

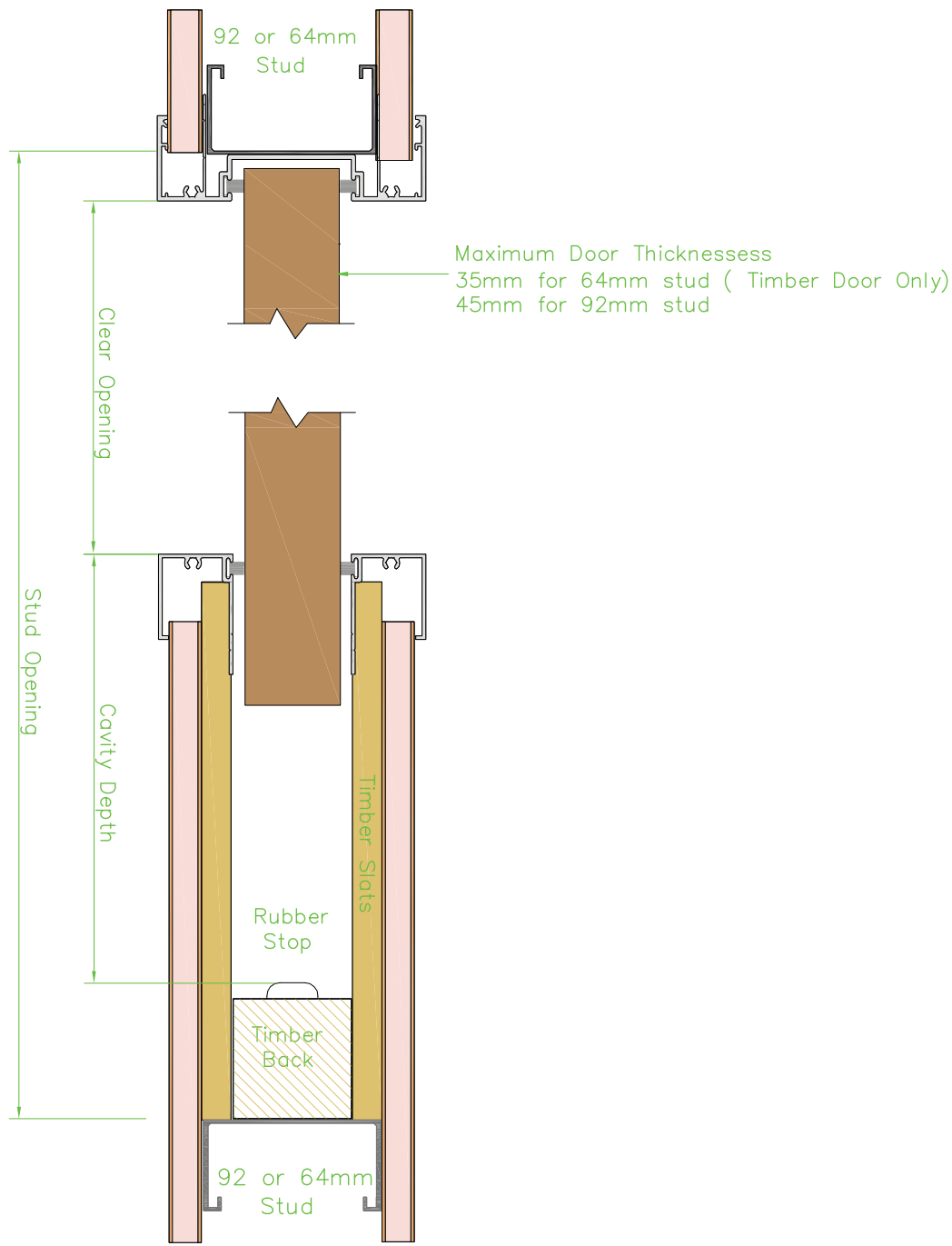


Option 2 Full height



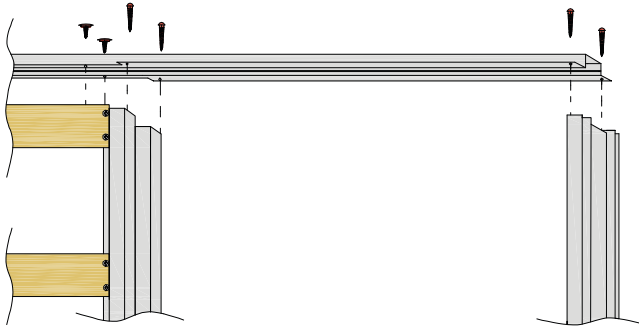
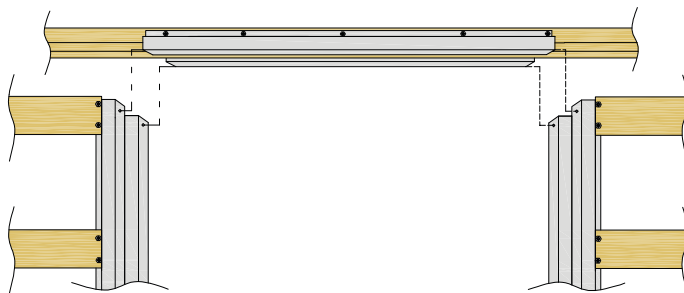
Option 3 Plasterboard above unit

Detail 10 | Metinno Aluminium Cavity Sliding Door

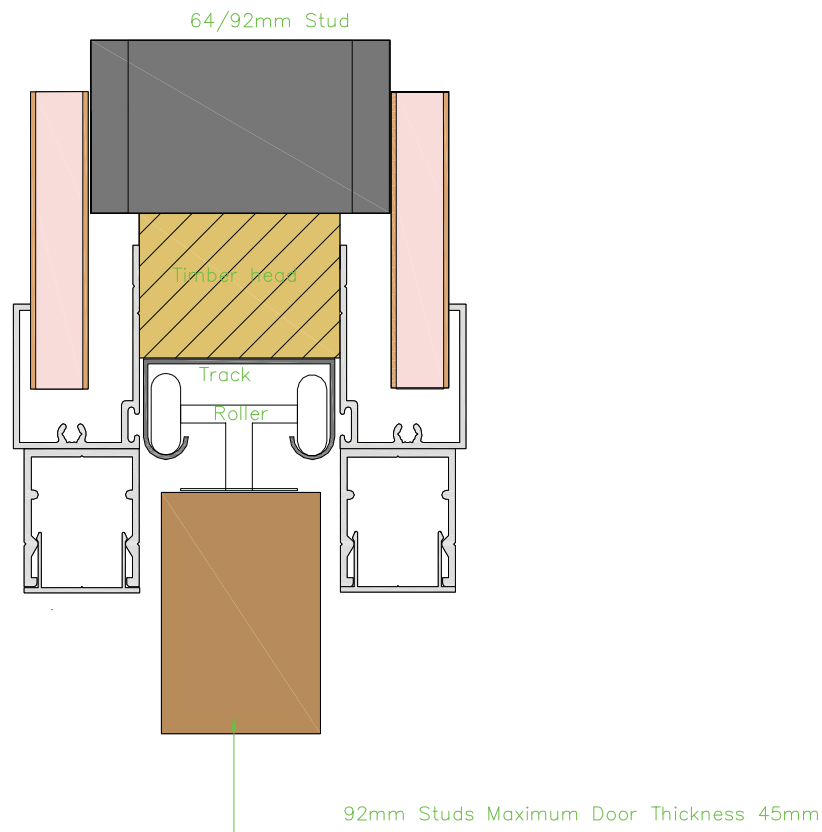


Colour Legends

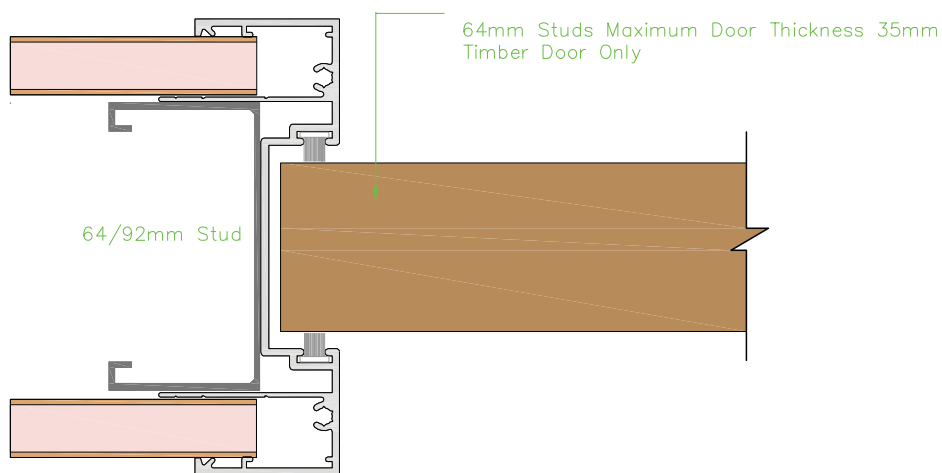
- Aluminium Partition (face and section)
- Steel Stud
- Plasterboard Profile

Detail 11 | Metinno Aluminium Full Height Cavity Slider**Detail 12 | Metinno Aluminium Cavity Slider with Plasterboard Above****Detail 13 | Metinno Aluminium Double Cavity Slider**

Detail 14 | Metinno Aluminium Head Track and Roller



Detail 15 | Metinno Aluminium Recessed Closing Stile

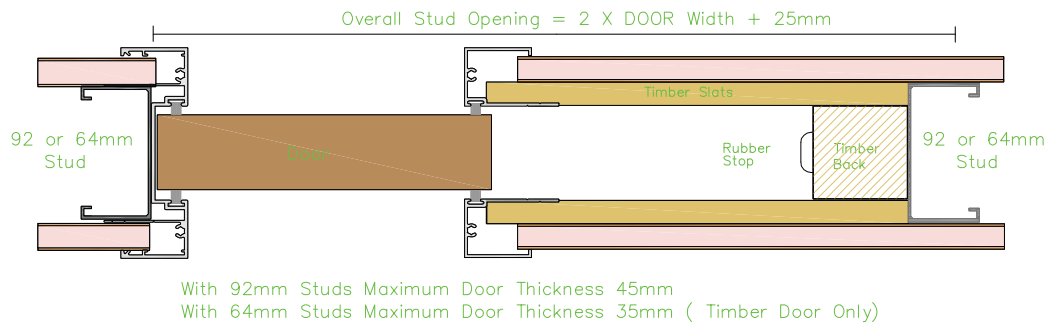


Colour Legends

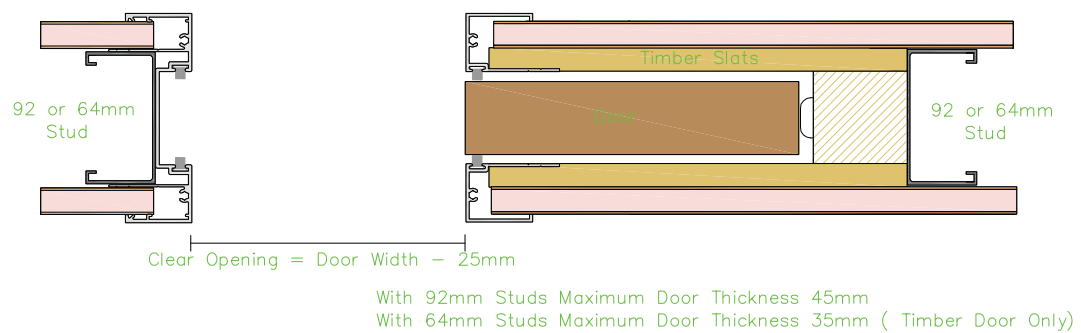
- Aluminium Partition (face and section)
- Steel Stud
- Plasterboard Profile

CAVITY SLIDER CONSTRUCTION DETAILS

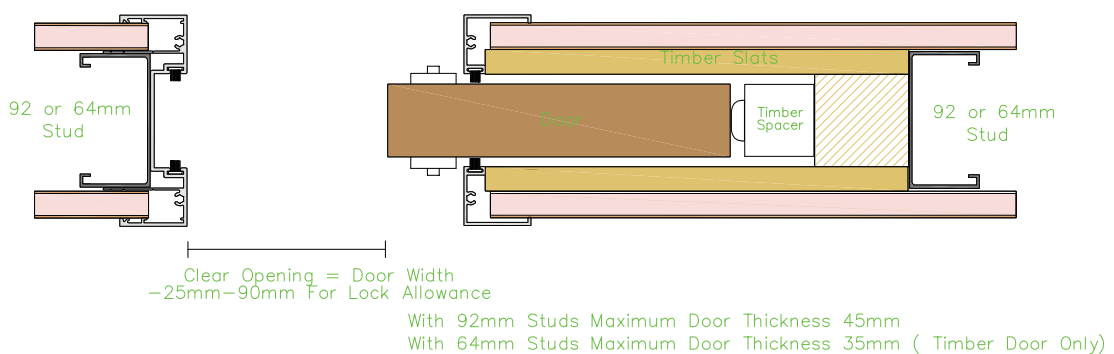
Detail 16 | Metinno Aluminium Overall Standard Opening Between Studs



Detail 17 | Metinno Aluminium Clear Opening



Detail 18 | Metinno Aluminium Clear Opening with Lock Allowance

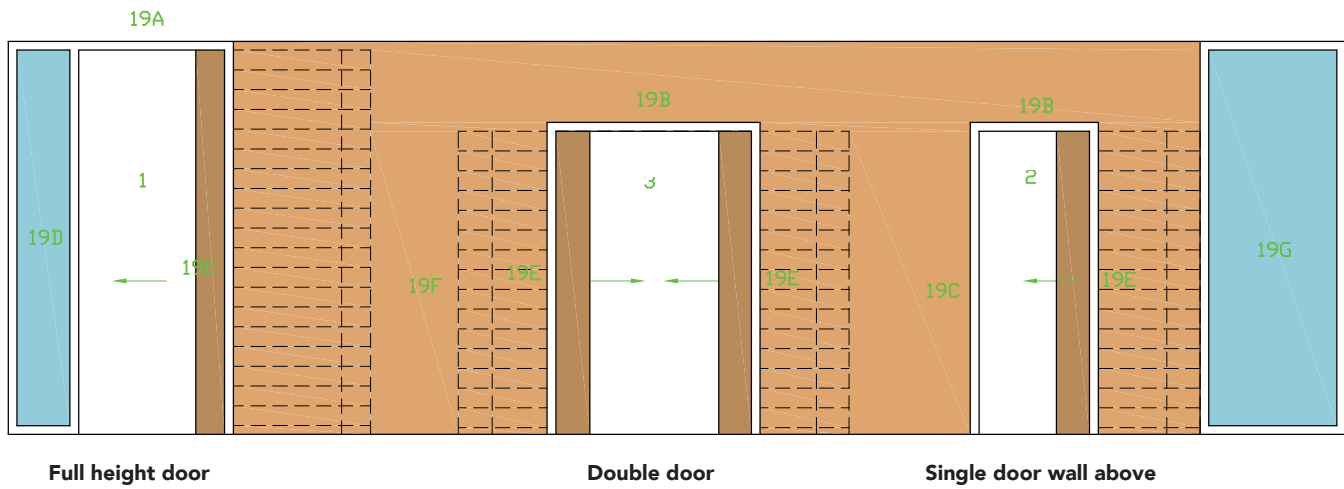


Plan View with Aluminium opening frame. Available for 64mm and 92mm steel studs.
Please note only 35 mm doors fit in the 64mm stud profile.

METINNO® Aluminium

CAVITY SLIDING DOOR SYSTEM

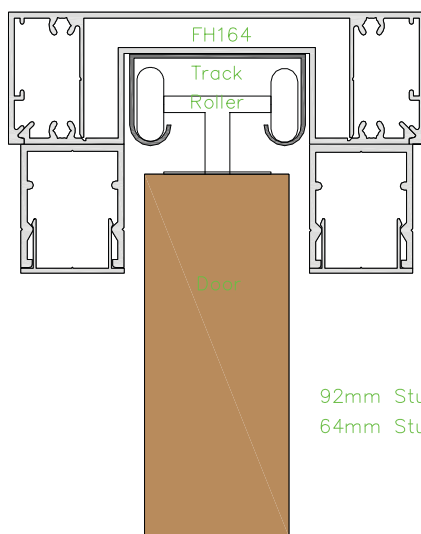
Detail 19 | Metinno Aluminium Assembly Detail for 64mm or 92mm Studs



See following pages for drawings 19A to 19G

Note: The Metinno system is only available in a completed unit. The individual drawings are for your information only.

Detail 19A | Metinno Aluminium Head Track and Pelmet for Full Height Option



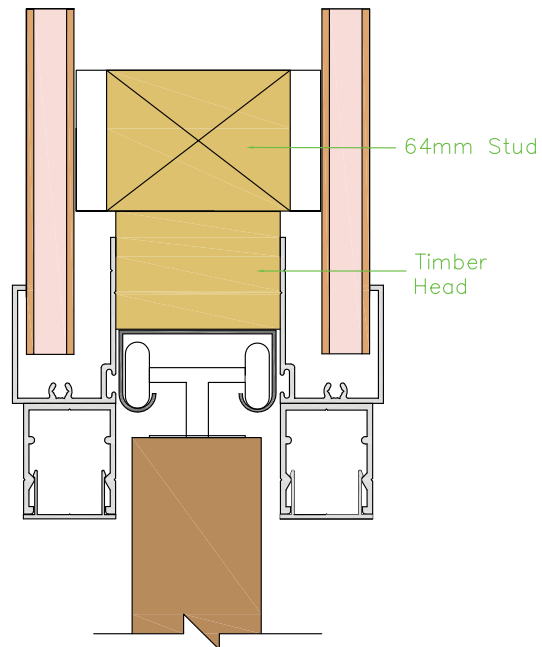
92mm Studs Maximum Door Thickness 45mm
64mm Studs Maximum Door Thickness 35mm (Timber Doors Only)

Colour Legends

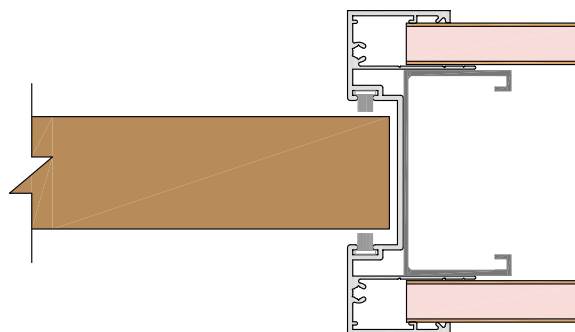
Aluminium Partition (face and section) Steel Stud Plasterboard Profile

CAVITY SLIDER CONSTRUCTION DETAILS

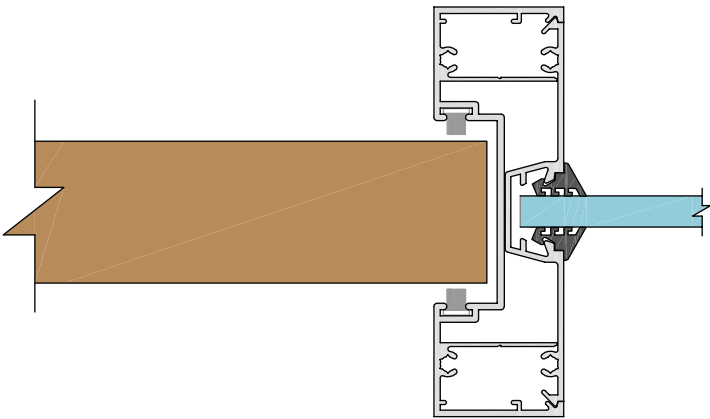
Detail 19B | Metinno Aluminium Head Track and Pelmet with Partition Above



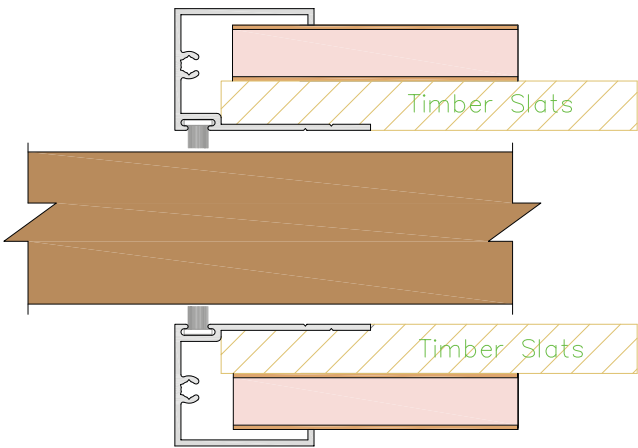
Detail 19C | Metinno Aluminium Receiver to Partition



Detail 19D | Metinno Aluminium Receiver to Glass Junction



Detail 19E | Metinno Aluminium Cavity Jamb Detail

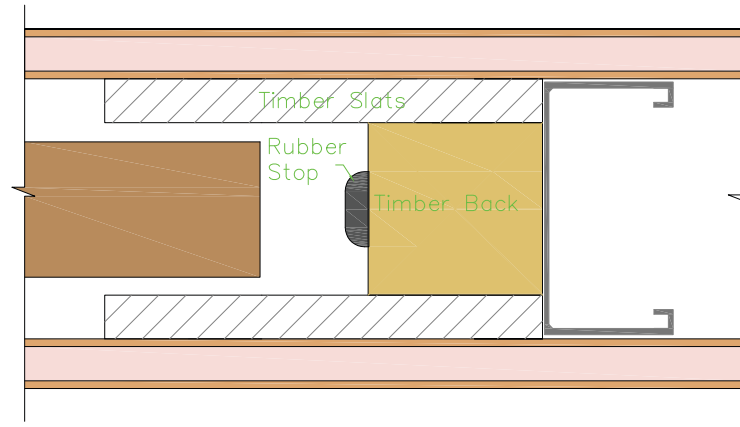


Colour Legends

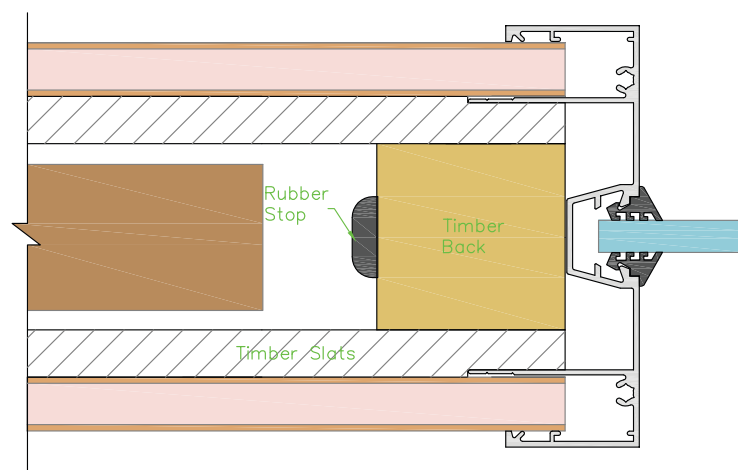
- Aluminium Partition (face and section)
- Steel Stud
- Plasterboard Profile

CAVITY SLIDER CONSTRUCTION DETAILS

Detail 19F | Metinno Aluminium Rear of Cavity Detail



Detail 19G | Metinno Aluminium Rear of Cavity to Glass Junction



METINNO® Archiline, Flushline & Shadowline

CAVITY SLIDER INSTALLATION INSTRUCTIONS

Detail 20 | Metinno AR, FL & SL Cavity Slider Installation Instructions

Assembly / Installation Instructions

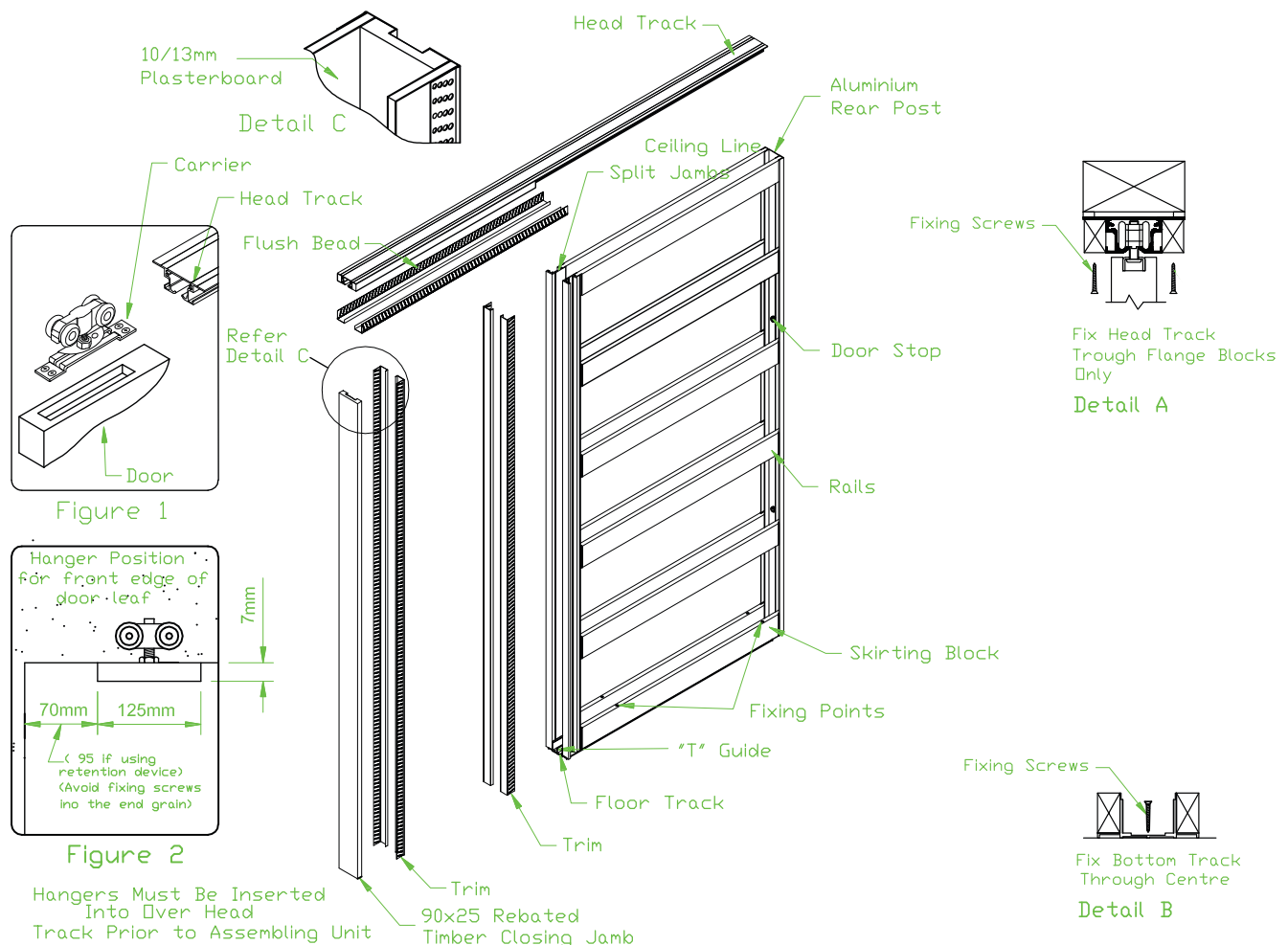
1. Attach overhead track to cavity frame and slide rollers into track.
2. Check for level and cut closing jamb to size, if required. Fix closing jamb (optional) to overhead track. Fit into place, ensuring it is plumb and square.
3. Pack unit, if necessary, to finished floor level and secure to stud.
- 4a. Fit carriage base plates (x2) to door 60-80mm from each end (Refer to Figure 1 & 2). Must be rebated 7mm into door.
 - b. For aluminium doors secure base plates (x2) where stiles finish.
5. Install door into position and check operation before cladding.
6. Clad wall, ensuring fixings penetrate into but not through rails.
7. Fit trims to 90x25 rebated timber closing jamb (see detail C). Fix MCXTRIM1024 trims over split jamb and overhead track. Screw into position with bugle head screws ensuring below flushing level.
8. ALWAYS fix bottom track through skirt blocks, fixing through centre of track is acceptable.

Note:

Use countersunk head screws that do not protrude more than 4mm above the aluminium floor track to ensure no obstruction to door (see detail B).

If you drill, nail or screw through the centre of the track this will cause the track to be contaminated by aluminium flings and swarf. This will effect the smooth running of carriages and must be removed.

Always fix the top track to the stud above from the outside flanges (see detail A).



Detail 21 | Metinno Aluminium Cavity Slider Installation Instructions

Assembly / Installation Instructions

1. Fix head piece to the cavity pocket by screwing the aluminium sections together using the 8g x 30mm pan head screws.
2. Fix the head through the timber rails using the 6g x 20mm pan head screws.
3. Measure the length required for the receiving stile. (The receiving stile is supplied 20mm over length to allow for un-even floor.) Trim the receiving stile to size.
4. Screw the receiving stile into place with the 8g x 30mm pan head screws.
5. The unit can now be stood in place, snapped into the existing head track and fixed to the floor through the metal base.
6. Remove the temporary fabrication screws holding the track and replace them with the 8g x 32mm button head screws, ensuring to fasten to a solid substrate. This will fasten the track, full-height section and head track together.
7. Install the door, then screw the pelmet infill section to the aluminium head section with the 10g x 16mm micro flat head screws, and finally snap the pelmet into place.

