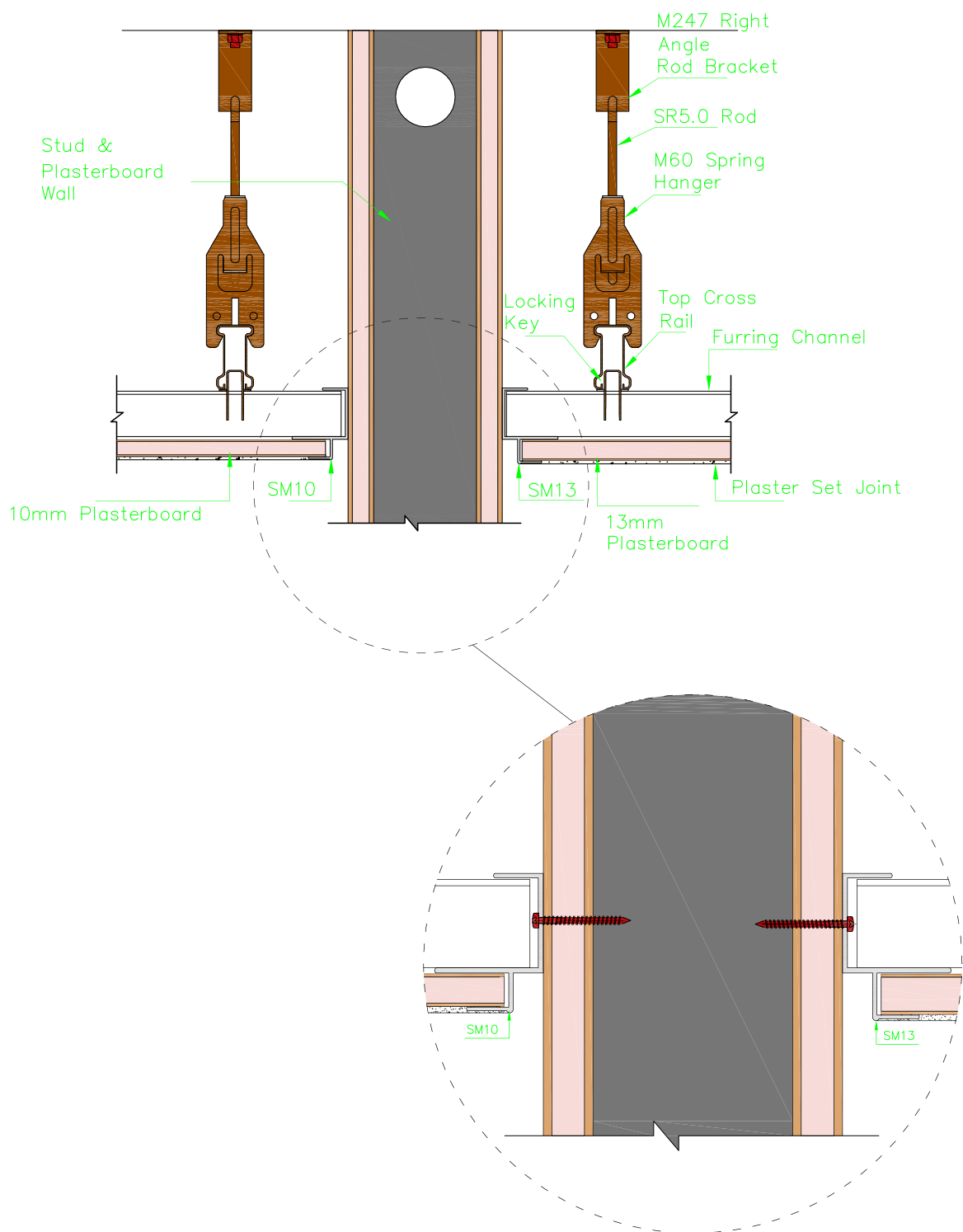


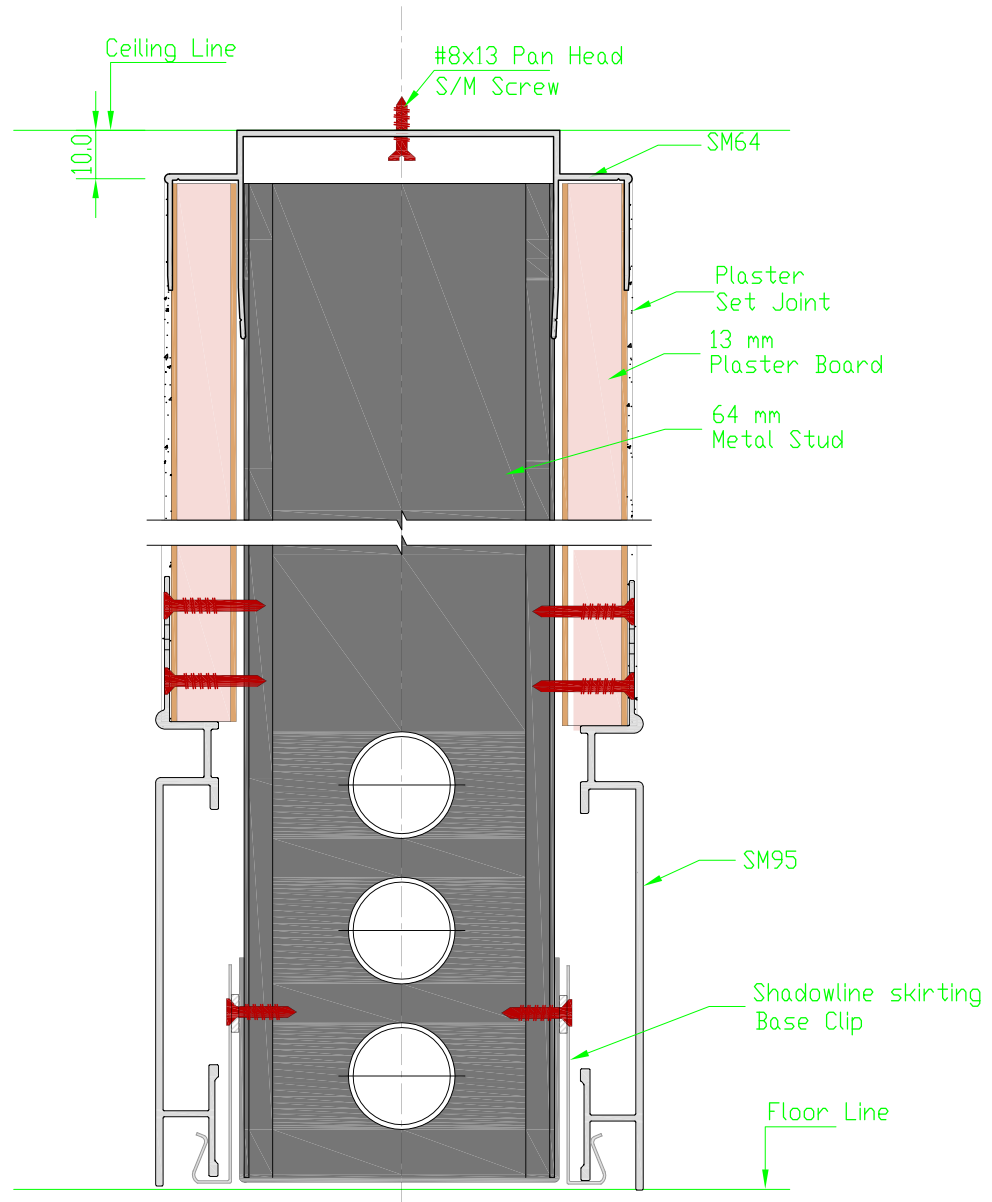
Detail 1 | Vertical Section Drawing of SM10 & SM13 in Suspended Ceiling



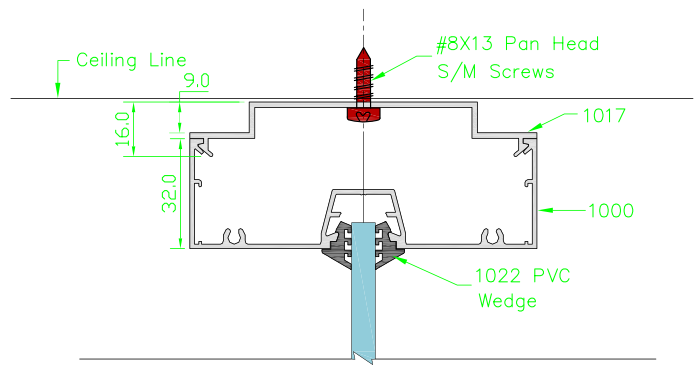
Colour Legends

- Aluminium Partition (face and section)
- Steel Stud
- Plasterboard Profile

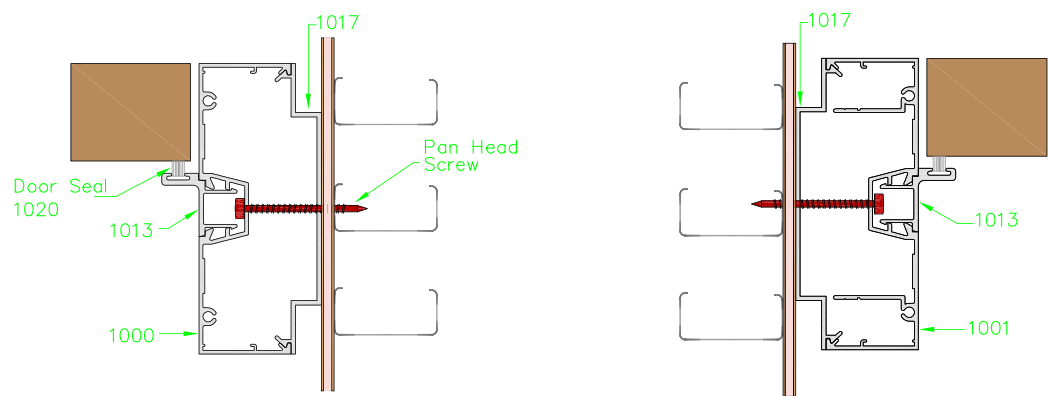
Detail 2 | Vertical Section Drawing of SM64 Shadowmax Detail at Ceiling



Detail 5 | Vertical Section Drawing of 1017 at Ceiling



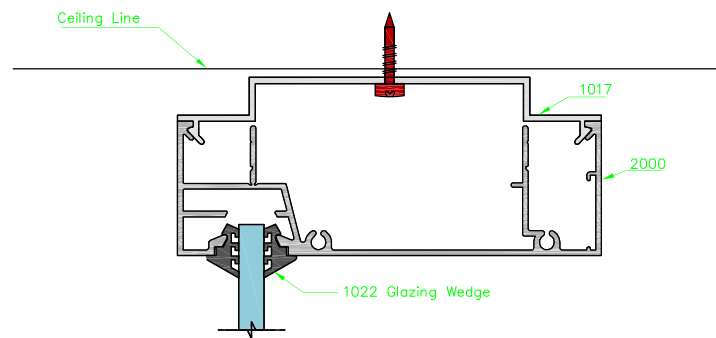
Detail 6 | Horizontal Section Drawing of 1017 at Wall with Either 1000 or 1001



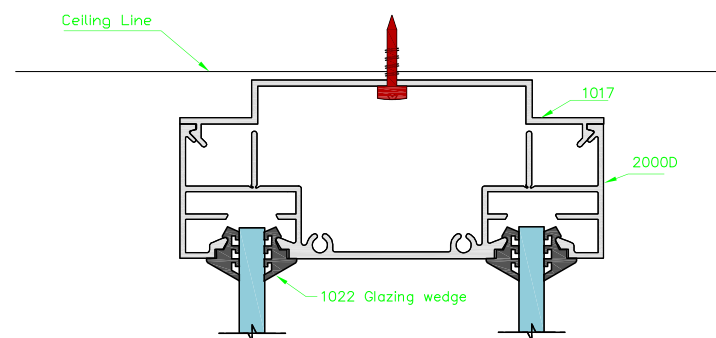
Colour Legends

- Aluminium Partition (face and section)
- Steel Stud
- Plasterboard Profile

Detail 7 | Vertical Section Drawing of 1017 Used with Glazing Section at Ceiling

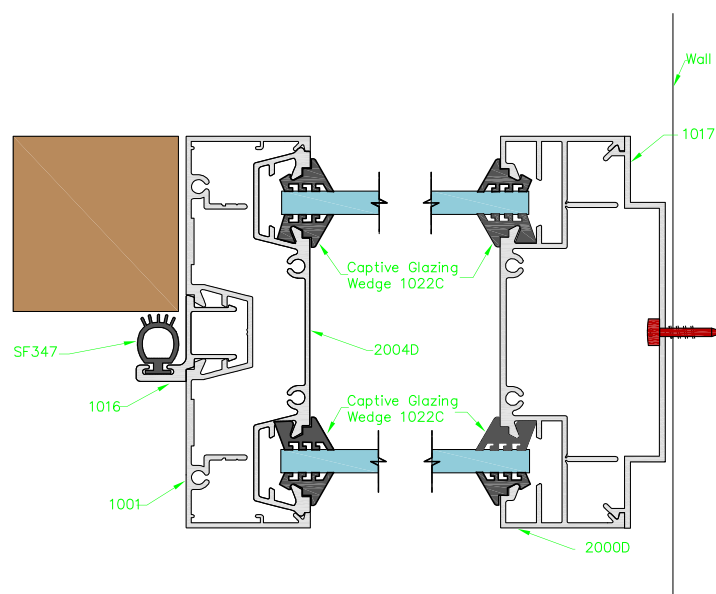


With single glass partition

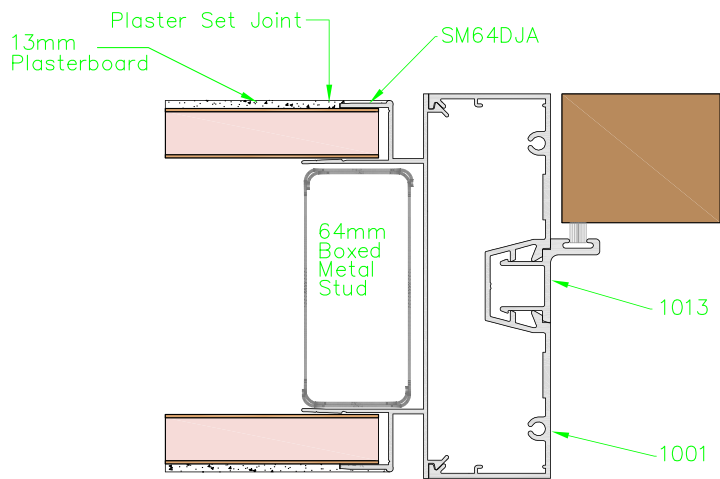


With double glass partition

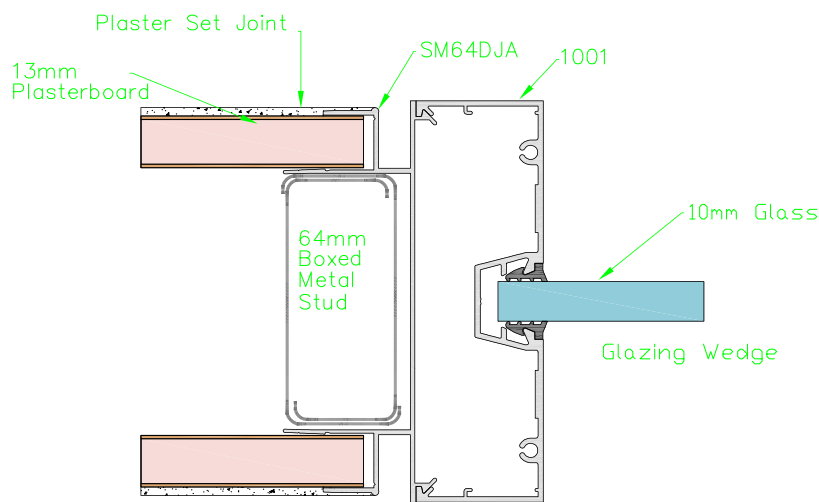
Detail 8 | Horizontal Section Drawing of 1017 Used with Glazing Section at Wall



Detail 3 | Horizontal Section Drawing of Shadowmax SM64DJA



Attached to aluminium doors

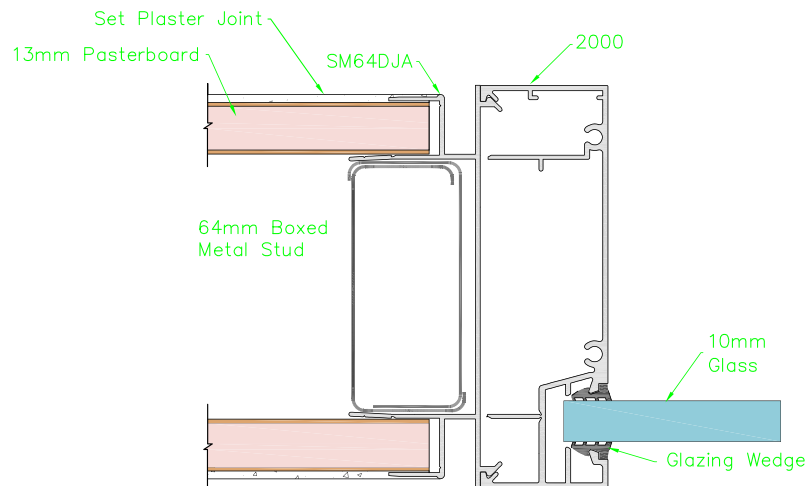


Attached to aluminium window frames

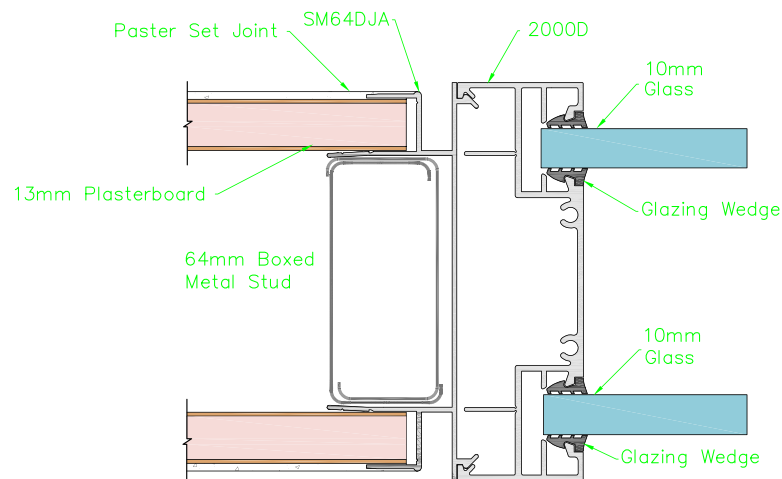
Colour Legends

- Aluminium Partition (face and section)
- Steel Stud
- Plasterboard Profile

Detail 4 | Section Drawing of SM64DJA with Glazing Section in Stud and Plasterboard Wall



With single glass partition



With double glass partition