

# Heradesign Introduction and Tech Data

Heradesign super fine is a stock Adelaide product. ADX has chosen the most popular of the Heradesign surface finishes to avoid freighting and waiting blowouts for your project.



# Heradesign Tech Data

## Heradesign

### Application

Heradesign is used for internal wall and ceiling applications where an aesthetic and sound absorbing surface is required. It controls sound reverberation and reduces the level of sound in a space. It is ideal for large open areas in public buildings, aquatic areas and restaurants. It is also suitable for sports facilities as this product also has some ball impact resistance\*.

*\*Research and materials testing institute of Baden-Württemberg, FMFA Stuttgart.*

## Heradesign

**Heradesign is an acoustic wall and ceiling panel made from wood wool sourced from sustainable timber, which is protected and bound together with pure magnesite and water.**

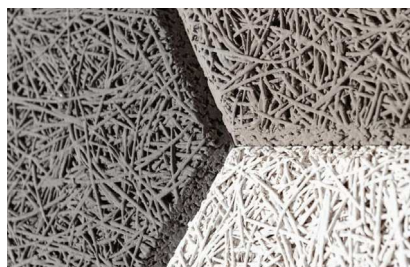
Heradesign has excellent acoustic performance to diffuse and absorb noise and sound whilst creating aesthetic design flexibility.

- Good sound diffusion and absorption to improve room acoustics.
- Design flexibility with various textures, colour options and applications to meet all project requirements.
- Durable against ball impact\*, 90% relative humidity and fungal attack.
- Flame and termite resistant.

## Product Range Information

Panel	Thickness (mm)	Edge Detail	Surface	Weight* (kg/m <sup>2</sup> )
1195 x 595	25	AK-01, SK-04 ^	Natural - Superfine	11.3
<b>Hazards Identification</b>	Group 1 material according to the requirements of BCA Section C1.10 Fire Hazard Properties Average Specific Extinction Area < 250 m <sup>2</sup> /kg as required by BCA Specification C1.10a, Clause 3(c)			
<b>Hazards Identification</b>	Not classified as hazardous according to the criteria of NOHSC Australia			

*\*Weights indicated are nominal. ^None stock items - available to order*



## Performance



### Sound

Excellent sound absorption with  $\alpha_w$  up to 1.00.



### Impact

Tested for ball impact resistance according to DIN 18032, with no damage observed\*.



### Interior Design

Unique appearance and texture. Available in natural and can be painted to any desired colour.



### Humidity

Suitable for environments with constant relative humidity of up to 90%.



### Edge design SK

25 mm thick



### Group 1 Fire

EN 13501.1:B-s1,d0

## Sound Absorption Performance

Frequency	125	250	500	1000	2000	4000	$\alpha_w$	NRC
<b>25 mm Heradesign Superfine</b>								
175mm cavity without insulation	0.25	0.65	0.70	0.60	0.75	0.90	0.70	0.70
60mm cavity with 50mm EarthWool 22 kg/m3	0.35	0.90	0.95	0.85	0.90	0.90	0.90	0.90
275mm cavity with 50mm EarthWool 22 kg/m3	0.70	0.90	0.90	0.90	0.80	0.95	0.90	0.90

## Colour Matching and Painting

Heradesign panels are available in uncoated neutral colour. These are easily matched up to other materials by the project joinery team. Heradesign can also be painted on site. This product should only be spray painted. This ensures a uniform consistency over the entire surface. Deviations in colour tone and colour perception may occur due to the rough fibre and panel surface.

\*Research and materials testing institute of Baden-Württemberg, FMPA Stuttgart.

## Installation

Heradesign is installed via screw fixing either to timber or suspended metal framing. It can also be installed in an exposed grid system. The use of Heradesign screws will assist in easier installation. Depending on the panel size and thickness at least two screws per panel width and three screws per panel length are required.





Tech Data Heradesign

**Heradesign**<sup>®</sup>

For samples and brochure call Craig on **0447650200**  
or email **solutions@adxdepot.com.au**



[www.adxdepot.com.au](http://www.adxdepot.com.au) (08) 8292 5000 [solutions@adxdepot.com.au](mailto:solutions@adxdepot.com.au)