





Architectural Lookbook

2019 edition

© ADX Depot 2019

Written by Sarah Bauer

Graphic Design by Alice Whitelum

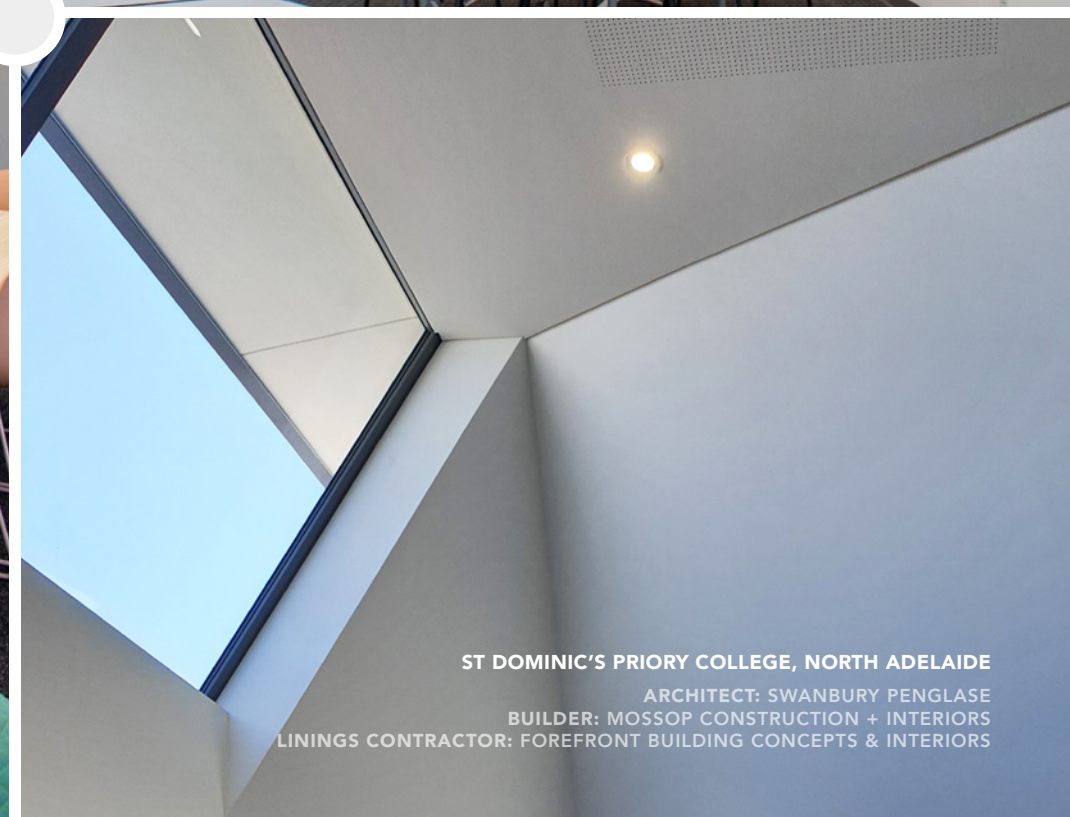
Photography by Alice Whitelum & Sarah
Bauer or supplied by Builder or Architect

Printed by Bowden Print Group

We strive for 'Better than Best'
customer service in supplying building
materials, to make your life easier.

That's ADXellent customer experience.





ST DOMINIC'S PRIORY COLLEGE, NORTH ADELAIDE
 ARCHITECT: SWANBURY PENGLASE
 BUILDER: MOSSOP CONSTRUCTION + INTERIORS
 LININGS CONTRACTOR: FOREFRONT BUILDING CONCEPTS & INTERIORS

1	Commercial & Office Fitouts	1	5	Medical	37
	BAE Systems Adelaide	2		480 Specialist Centre	38
	Edible Blooms	4		Ashford Hospital	40
	Mill Film Studio	6		Calvary Hospital Adelaide	42
2	Apartments & Residential	9	6	Retirement Living	45
	The Gallery West	10		Helping Hand Residential Care	46
	UniLodge Student Apartments	12		Carmelite Residential Care	48
	Hahndorf Residence	14			
	Arcadia Display Home	16			
3	Education	19	7	ADX Depot	50
	LeFevre High School	20		Locations	50
	Pembroke Middle School	22		Services	51
	Christian Brothers Senior Campus	24		Product Categories	52
				Trusted Brands	53
				Book a Product Presentation	54
4	Retail	27	8	Product Index	55
	Rundle Mall Plaza	28			
	Romeo's Foodland Rundle Mall	30			
	Berkowitz Furniture - Homemaker Centre	32			
	TreeClimb Aerial Adventure Park	34			

contents



1

 adxarchitectural

Commercial & Office Fitouts

projects

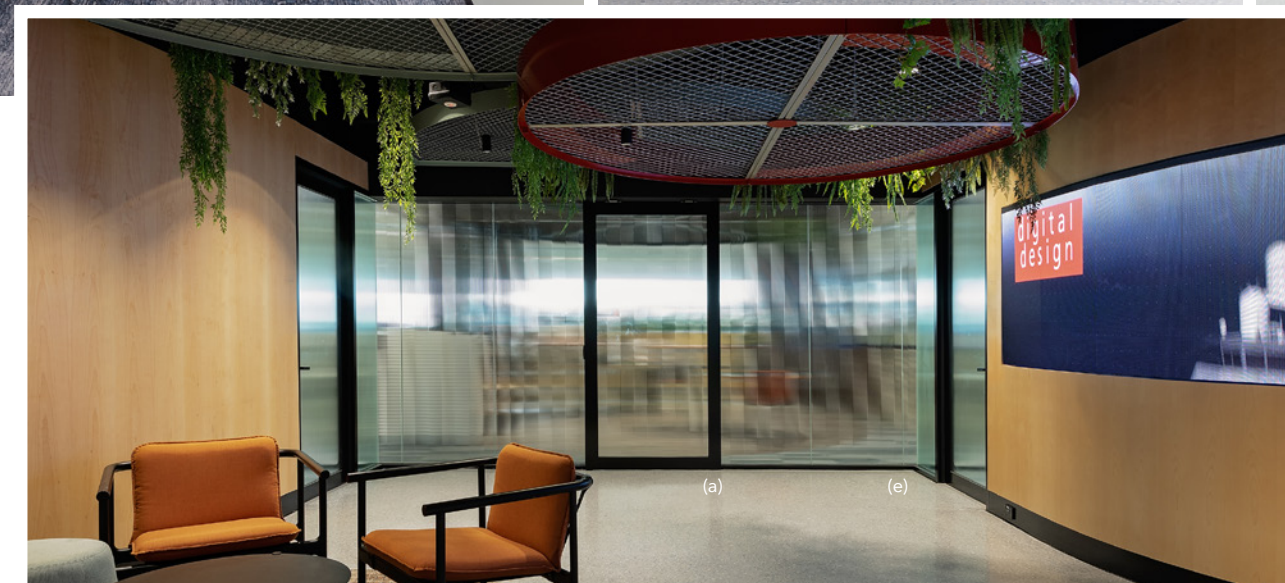


GOVERNMENT

BAE Systems

For Australia's most versatile defence and security company, a workspace has been created featuring products that perfectly reflect these qualities throughout the design. A combination of aluminium partition systems that seamlessly integrate with each other has added functionality and an aesthetically pleasing finish to the refurbished BAE Systems office in Adelaide.

ADELAIDE, SOUTH AUSTRALIA



ARCHITECT: IA DESIGN • BUILDER: FDC CONSTRUCTION & FITOUT • LININGS CONTRACTOR: PREMIER LININGS

Products Featured: (a) 5000 Series Aluminium Sliding Door* (b) 6000 Series Aluminium Hinged Door* (c) 9000D Series Double Glazed 45mm Profile Aluminium Partitioning* (d) 5200 Series Centre Glazed 50mm Profile Aluminium Partitioning* (e) 1000 Series Centre Glazed 32mm Profile Aluminium Partitioning* (f) 150mm Aluminium Skirting Adhesive Fix* *Powder Coated Satin Black

Achieve high levels of **acoustic isolation** in spaces requiring confidentiality with the heavy-duty, double-glazed 9000D aluminium partitioning system.

designtip

Edible Blooms

RETAIL

With both distinct geometric shapes, unique angles and seamless finishes featuring throughout the entire building, this new addition to the Keswick area will catch your eye driving past as much as their hampers do. Each section of the building is separate yet cleverly integrated, enabling the whole team to interact. The tall triangular shape of the foyer is the meeting point for each work space with a hollow display shelf that gives shoppers a sneak peek of the creatives at work. With floor to ceiling glass windows and a balcony overlooking the showroom, it's easy for the team to keep up with everything happening within their new refreshing workspace filled with natural light.

EVERARD AVE, KESWICK

(a)

Products Featured: (a) James Hardie Versilux® (b) Knauf Plasterboard

BUILDER: APS BUILT • LININGS CONTRACTOR: ACM FITOUTS & MAINTENANCE



designtip

Increase collaboration within a work space with open-plan spaces.

(b)



Mill Film

FILM INDUSTRY

The first Australian studio for global visual effects company Mill Film has been completed within the heart of Adelaide's CBD. The three-level space will accommodate 500 crew members in a dynamic workplace that is visually inspired by the brand. Studio Nine Architects have demonstrated two key principles throughout their design, "modelling and performance" and "light, colour and texture", being awarded gold in the Built Environment (Commercial) category at the 2019 DIA Awards.

From calm, monochromatic artist areas, through to warm, natural collaboration rooms and vibrant, colourful social spaces, each area utilises a different combination of materials which have been expertly constructed tying everything together. The completed office space overlooks spectacular views of Adelaide Oval, Parliament House and the Governor's residence, which was a large drawcard in choosing the building.

NORTH TERRACE, ADELAIDE CBD



Inject personality into a space by combining a perfect balance of hard, industrial materials with soft warm tones.

designtip



ARCHITECT: STUDIO NINE ARCHITECTS • BUILDER: BUILT • LININGS CONTRACTOR: CARBINE INDUSTRIES

Key Products Supplied: Studco Steel Stud & Track Framing, Knauf Plasterboard, Plastaworx® Access Panels



MITCHAM RESIDENCE, ADELAIDE
BUILDER: KLEMM HOMES



Apartments & Residential projects



APARTMENTS

The Gallery

A redevelopment of the Footy Park precinct in West Lakes, The Gallery Apartments overlook the manicured fairways of Grange Golf Club. Accentuating the views from inside each apartment, the space incorporates EzyPelmet®, a two-piece steel pelmet box system, to achieve a simple and discrete transition between the interior ceiling and external windows.

Not only does this cold-rolled steel product assist in maintaining form by not cracking or distorting over time, but buyers have noticed and commented on the extra detail and how it has elevated the space. Paired with sheer curtains, a sense of tranquility has been created – a glamorous addition to the spacious, light-filled apartments. Achieving this look is easy with ADX Depot who can work with you to incorporate this product into your next project.

WEST LAKES, ADELAIDE



Hide unsightly window furnishing tracks and rolls or conceal feature lighting to create a seamless ceiling finish.

designtip

ARCHITECT: DAVIS + DAVIS • BUILDER: COMMERCIAL & GENERAL • LININGS CONTRACTOR: B&V CEILINGS

Products Featured: (a) EzyPelmet (b) Plastaworx® Access Panels (c) Knauf TruRock



STUDENT ACCOMMODATION

UniLodge

The new 17 floor apartment building constructed for UniLodge Australia will house 772 beds for student accommodation. Featuring the largest green wall in Australia, vibrant colour has been incorporated throughout the entire complex. Communal area walls become feature points with bright wall art adding another level of fun to the space. Underneath the colourful wall finishes, fire-rated wall systems have been constructed with the assistance of ADX Depot supplying specially cut Knauf Fireshield inserts to save install time on-site.

Spaces have been insulated and lined to meet acoustic requirements which is particularly important considering the apartment building will house many residents. The building makes use of a variety of different ceiling finishes, varying between perforated timber panels, suspended felt acoustic baffles and suspended ceiling systems utilizing AMF Fine Stratos Ceiling Tiles.

GRAY STREET, ADELAIDE

Products Featured: (a) AMF Thermatex® Fine Stratos Ceiling Tiles (b) Plastaworx® Access Panels (c) Knauf Watershield (d) Knauf Fireshield

ARCHITECT: BROWN FALCONER • BUILDER: SYNERGY CONSTRUCT • LININGS CONTRACTOR: GMR INTERIORS



designtip

Use **contrasting colours** for doorways to differentiate each level of the building.



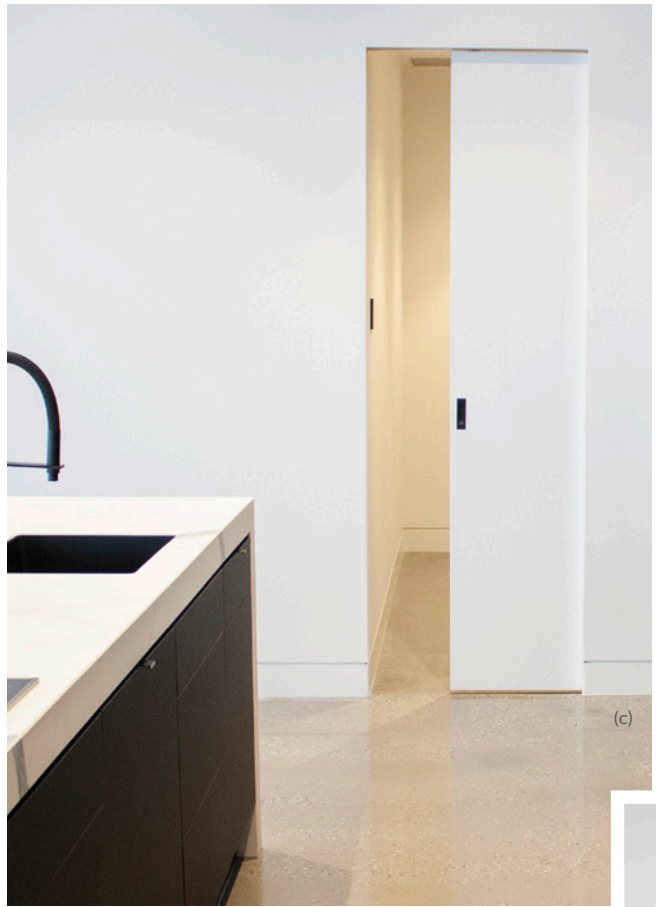


Hahndorf RESIDENCE

In a new build that defines luxury, this high-end residence designed by Architect Tim Hodges and built by Klemm Homes takes industrial design to another level. Walking through a grand entry you are greeted by sweeping high ceilings, supported by striking off-form concrete walls. A key design brief objective to introduce flow throughout the open spaces of this home has been achieved through utilising a combination of different cavity sliding door systems. With the endless options of cavity sliding door systems available through ADX Depot, any vision can be brought to life.

Whether it's to separate areas and achieve privacy or to allow spaces to open up and join rooms, this residence has it all. The glamorous dream of having a parent's retreat where you can hide away and take time to relax is accentuated by tinted glass double cavity sliding doors. The ultimate entertaining experience can be found by gathering friends and family in the comfort of the cinema room where every little detail has been considered. Discrete features like ShadowMax® skirting line the walls, tying rooms of all sizes together.

An industrial style home that has been softened by impeccable taste of furnishings, with floor to ceiling sheer curtains that open up to the deck and pool overlooking the stunning view of rolling hills and vineyards – this is the definition of luxury.



Create *seamless openings* or achieve *extra privacy* without compromising space with cavity sliding doors.

designtip



ARCHITECT: TIM HODGES ARCHITECT • BUILDER: KLEMM HOMES

Products Featured: (a) Cav-X® Frameless Glass Double Cavity Sliding Doors (b) Frameless Glass Cavity Sliding Door Hardware (c) ShadowMax® Skirting

Arcadia

DISPLAY HOME

Displaying elegance and style around every corner, Arcadia by Adelaide Dream Homes shows how innovative products can work together to create an extraordinary lifestyle through design. The Springlake display village is home to this high-end residence where every part of the build has been carefully considered. Contemporary lines created with ShadowMax® skirting guide you through the entry and into the first living space. Further into the home you are lead to a cellar room which is stylishly separated by the simplicity of tinted frameless glass cavity sliding doors. This detail allows the room and its contents to be as discrete or distinct as desired.

Narrower spaces need not miss out on a stylish addition. Continue the shadow line detail with ShadowMax® door jambs. With modern lines bordering simple doorways, consistency is added throughout different spaces with this easy-to-install product. These simple design additions are fast becoming a must-have within contemporary design.

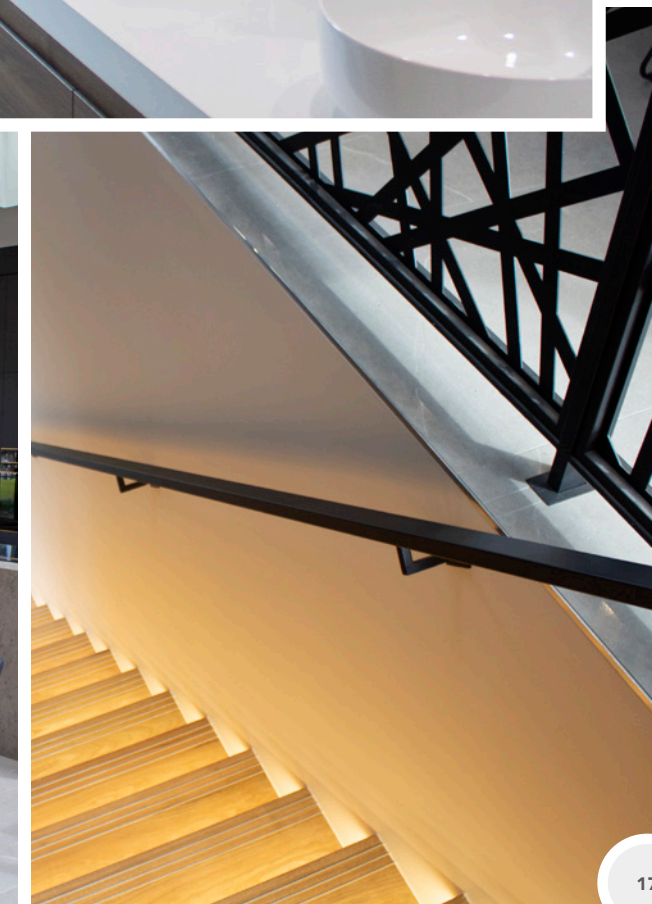
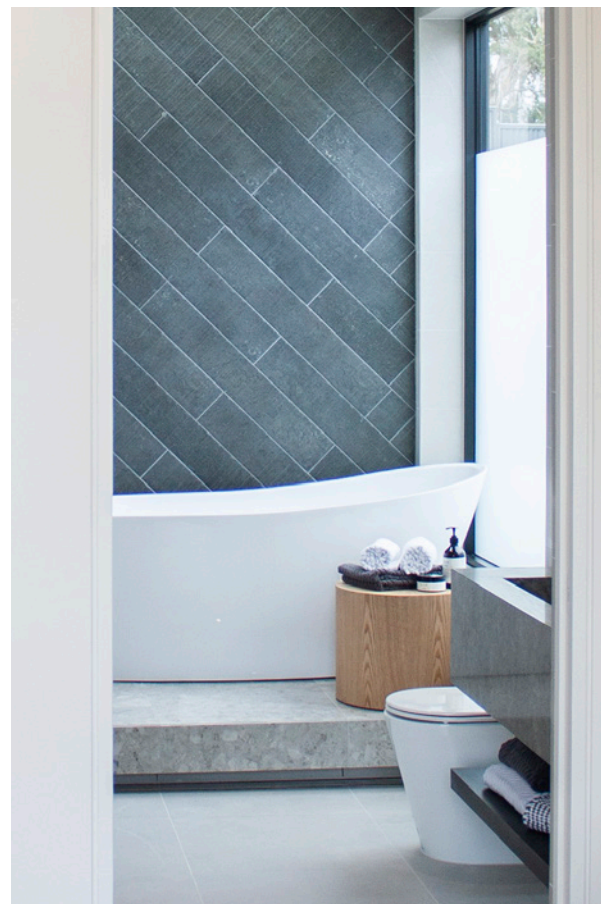
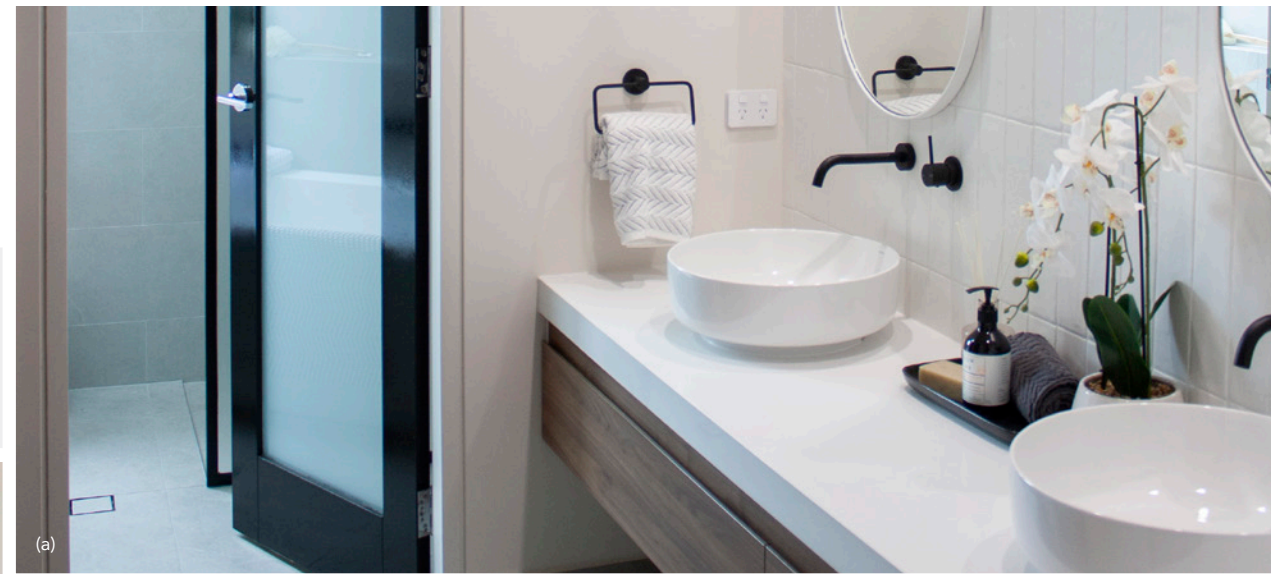
SPRINGLAKE, MOUNT BARKER

designtip

Add style and **elegant detail** around doorways and openings with the ShadowMax® Jamb.

Products Featured: (a) ShadowMax® Door Jamb (b) ShadowMax® Skirting (c) Cav-X® Shadowline Cavity Sliding Door

BUILDER: ADELAIDE DREAM HOMES



PRIDHAM HALL - UNIVERSITY OF SOUTH AUSTRALIA, ADELAIDE

ARCHITECT: JPE DESIGN STUDIO PARTNERED WITH SNØHETTA
BUILDER: MOSSOP CONSTRUCTION + INTERIORS
LININGS CONTRACTOR: CEILING & WALL CONTRACTORS

3



Education

projects

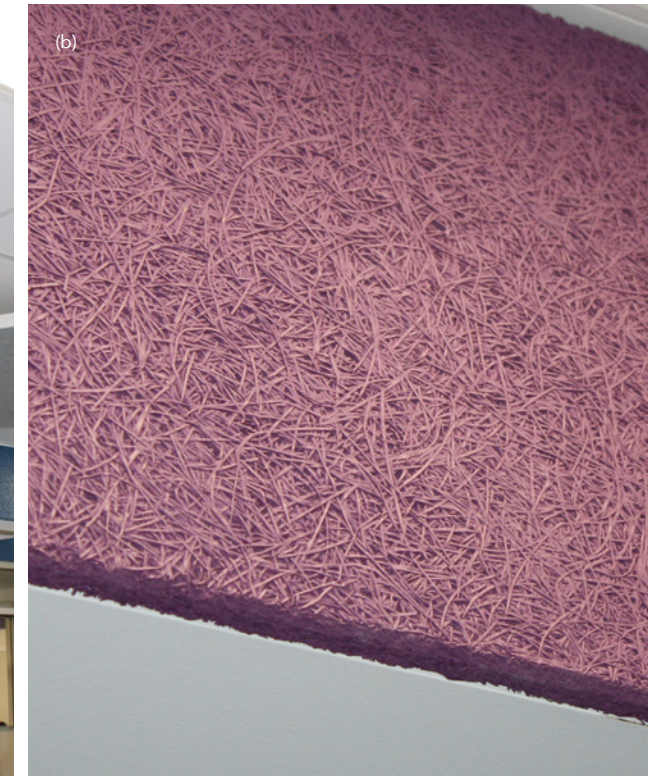
LeFevre EDUCATION High School

LeFevre High School, in Semaphore South Australia, recognised the importance of creating spaces that contribute to students' quality of education. As a result, LeFevre High was designed featuring a number of innovative products.

Knauf AMF TOPIQ® Sonic element ceiling rafts are an exciting product distributed in South Australia by ADX Depot. The frameless and jointless ceiling rafts are designed with full-coloured face and reverse laminate fleece and are available in a variety of shapes and sizes. The soft-fibre ceiling raft is light-weight and uses cables and tension springs to create the appearance that it's free-floating.

Knauf AMF Heradesign® panels are made from wood wool, with natural fibres that are known for their ability to absorb sound as well as filter air within the space. Like TOPIQ® Rafts, Heradesign® panels add benefits to the space for the students, such as better acoustics to improve the learning environment. Heradesign® panels can be painted to any colour and this project has done this creating a bright yet calming space.

HART ST, SEMAPHORE SOUTH



ARCHITECT: CHAPMAN HERBERT ARCHITECTS • BUILDER: HANSEN YUNCKEN
• LININGS CONTRACTOR: COMMERCIAL FITOUTS AUSTRALIA (CFA)

AMF TOPIQ® Sonic Rafts
can be easily retrofitted to an
existing space requiring higher
acoustic performance whilst
adding a unique visual element.

didyouknow

Products Featured: (a) AMF TOPIQ® Sonic Rafts (b) AMF Heradesign® Panels (c) AMF Thermoacoustic® dB Acoustic Ceiling Tiles

MIDDLE SCHOOL

Pembroke

The \$25 million Pembroke Middle School Redevelopment creates an iconic statement within the education sector. The facility will become the focus for Middle School science, art, technology and cross disciplinary learning. The 3 levels comprise of six specialist classrooms, thirteen teaching spaces, science laboratories, technology workshops and art studios with a 15m feature concrete architectural facade and "The Shard" at the precinct's heart.

Classrooms line the building on each level allowing for a large open space in the centre which is flooded with natural light and gives a sense of bringing the outside in. To balance noise within this large open space, Knauf Stratopanel has been cleverly used, lining the ceilings, balustrade walls and even the underside of staircases ensuring extra sound absorption. There are many different breakout spaces for students to interact and engage with, some even becoming a display space for completed work. It's a completely dynamic space with every room being differently designed for their function, truly heightening your senses.

THE PARADE, KENSINGTON PARK



Products Featured: (a) Knauf Stratopanel (Standard Circular 8/18R) (b) AMF Thermatex® Thermofon Acoustic Ceiling Tiles

ARCHITECT: GRIEVE GILLETT ANDERSEN • BUILDER: SARAH CONSTRUCTIONS • LININGS CONTRACTOR: MAKA PLASTERBOARD



“
This building has been a terrific community effort where teachers have been involved in the design and where students have been interviewed about what they'd like in the building. It will increase the ability of the campus to address all subject areas equally.
Luke Thomson, Principal



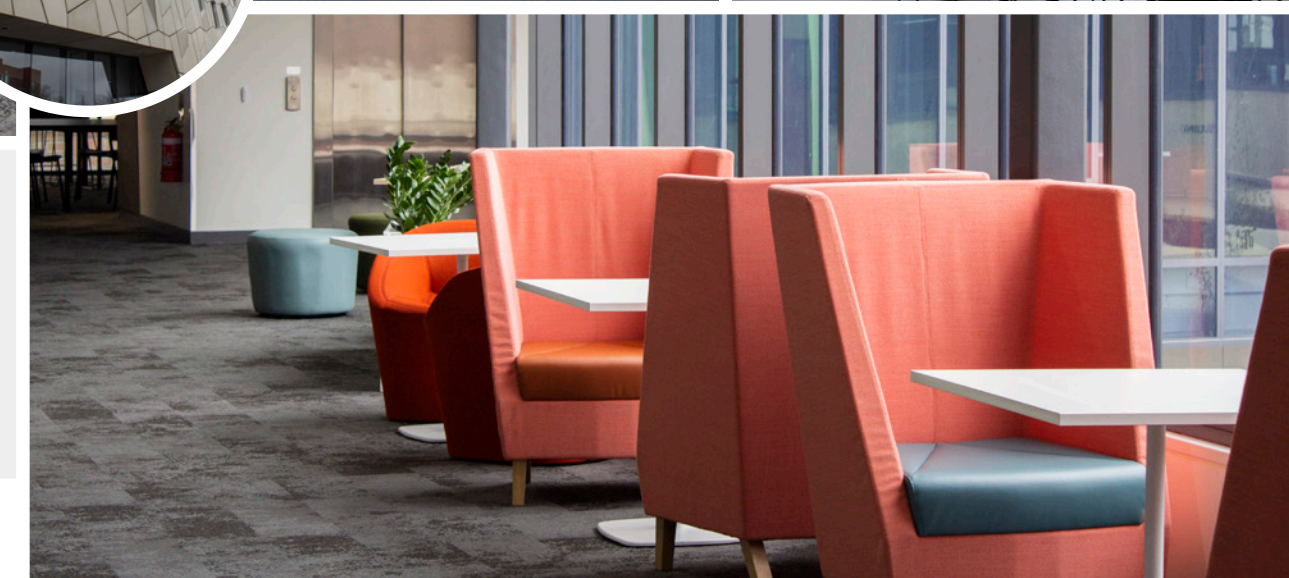
Christian Brothers College

SENIOR CAMPUS

Developed with references to the use of crystallised geometric forms, the new Centre of Innovation and Learning at the Christian Brothers College Senior Campus provides a contemporary and state-of-the-art learning environment for students, as well as an architectural icon in the heart of Adelaide. The complex mathematics used for the building exterior design pays tribute to the use of the facility being Science, Technology, Engineering, Arts and Mathematics (STEAM).

The vision for an uncompromising facility that maximises educational opportunities has been brought to life. Featuring natural materials with simple colours and textures, complimented by controlled natural and artificial lighting, refined acoustics and fresh air movement creating a high-quality learning environment. Whether it's for inspiring creativity, allowing students to take greater ownership of their learning or providing a more realistic education experience, all spaces from new music rehearsal pods, to interactive laboratories and flexible art studios are set to further student prospects.

WAKEFIELD ST, ADELAIDE



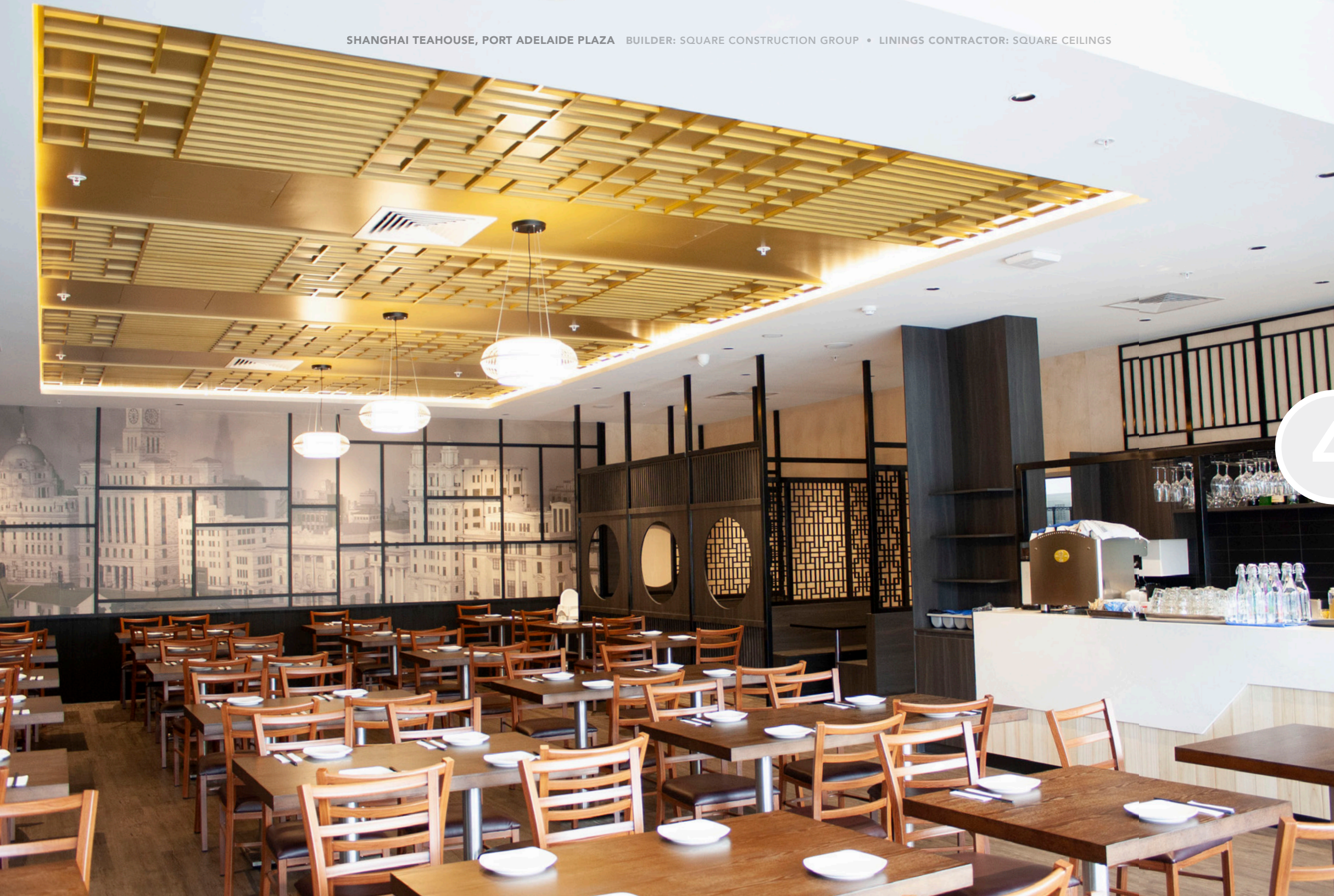
A true display of excellent design and workmanship with extra shadow line details around abstract geometric shaped windows.

John Walther, ADX Depot Account Manager



ARCHITECT: SWANBURY PENGLASE • BUILDER: MOSSOP CONSTRUCTION + INTERIORS
• LININGS CONTRACTOR: METROPOLITAN CEILINGS

Products Featured: (a) Knauf Stratopanel (Standard Circular 8/18R) (b) James Hardie ExoTec® (c) Acoustic Polyester Panels



4

 adxarchitectural

Retail

projects



SPECIALTY SHOPPING

Rundle Mall Plaza

The refurbishment of Rundle Mall Plaza has certainly been a stand-out project for South Australia, introducing global fashion chain H&M to the Adelaide CBD and receiving the Master Builders South Australia Building Excellence Award for Interior Finishes: Commercial in 2019. The Plaza is best known for its intricate feature ceiling designs. Whether you're walking through the main entrance, ascending the escalator or dining in the terrace, there are so many details to be seen.

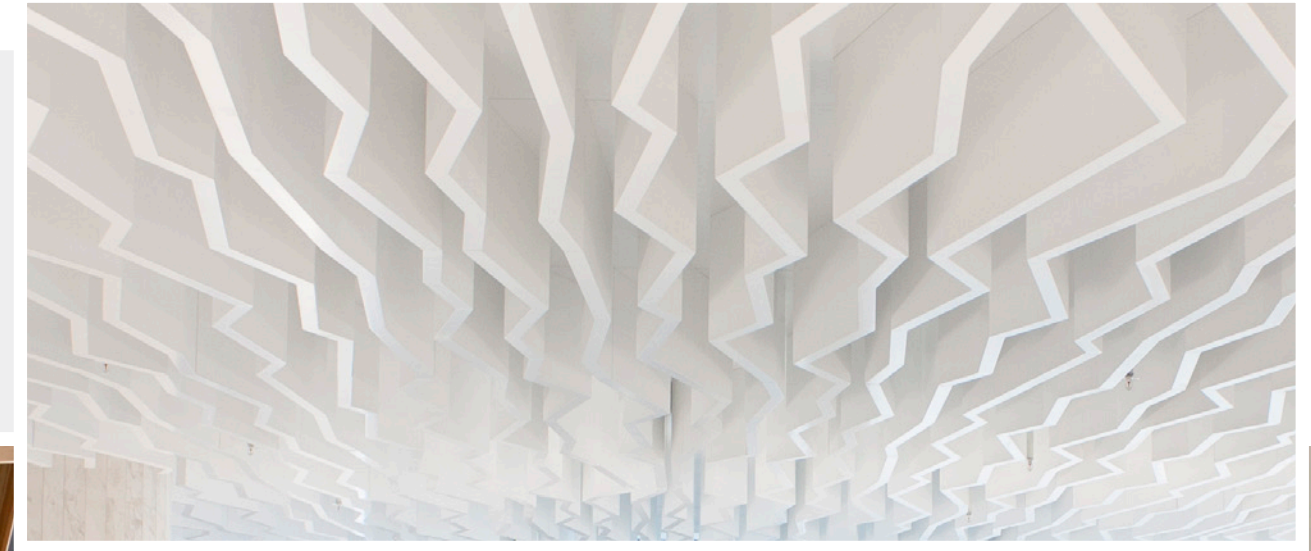
In the lead up to the prime retail season of Christmas, ceiling and wall contractor, Carbine Industries, worked closely with Hames Sharley and Hansen Yuncken round the clock to deliver an exciting and inviting space for retailers and shoppers to enjoy. To overcome the challenges of last-minute changes and delivery into a busy and tight city-location, Carbine Industries relied heavily on the support of ADX Depot for their ability to be flexible while executing last-minute deliveries.

RUNDLE MALL, ADELAIDE

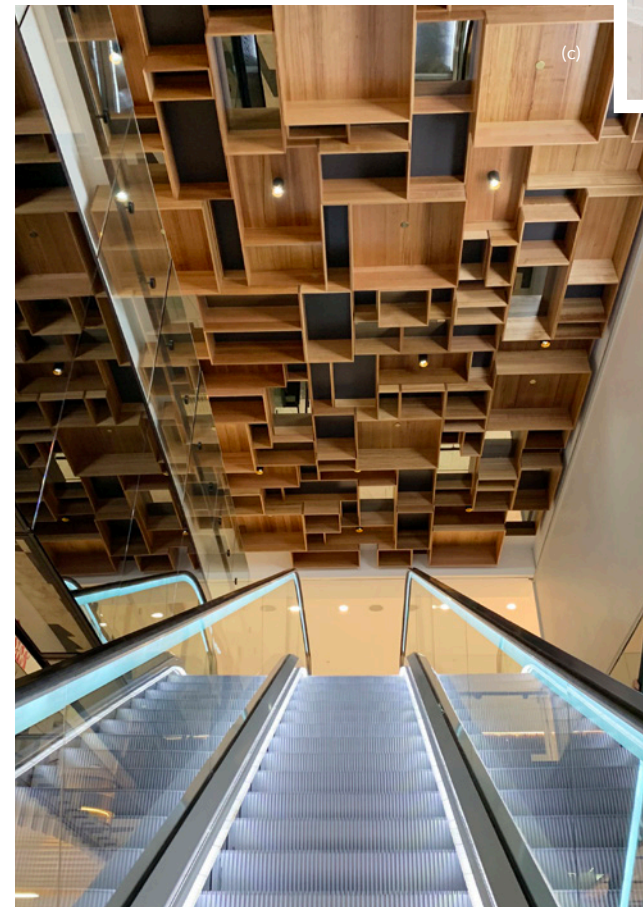


Products Featured: (a) Knauf Fireshield (b) Balsa Wood Feature Ceiling Panels (c) Studco Steel Stud & Track Feature Ceiling Framing

ARCHITECT: HAMES SHARLEY • BUILDER: HANSEN YUNCKEN • LININGS CONTRACTOR: CARBINE INDUSTRIES



“
The most rewarding part of seeing this project complete is watching shoppers and seeing their heads turn to take in the new look of the building. One person was so distracted by the new facade he walked into a tree! It's great to see such a positive response from the public and that they enjoy the new design.
Yaara Plaves, Hames Sharley



Romeo's Foodland

SUPERMARKET

The new Romeo's Foodland in Rundle Mall sets a benchmark for retailing with modern décor, state of the art refrigeration and electronic ticketing. The fit-out for the new supermarket located within the Citi Centre Arcade features black ceiling grid and tiles and departments lined with timber-clad bulkheads for easy customer-navigation.

Walking through the product aisles, customer attention to merchandise is maintained with the use of the black ceiling. Progressing through the store, the ceiling transitions with timber slats leading customer's eyeline and directing them through to the deli, cheesemonger, bakery and more. Creating architecture that successfully influences how the space is used is a sign of a successful project, particularly for a retail space.

Showcasing the large selection of fresh produce, the new Romeo's Foodland Rundle Mall is continuing to redefine the customer experience with this inspirational retail space.

RUNDLE MALL, ADELAIDE

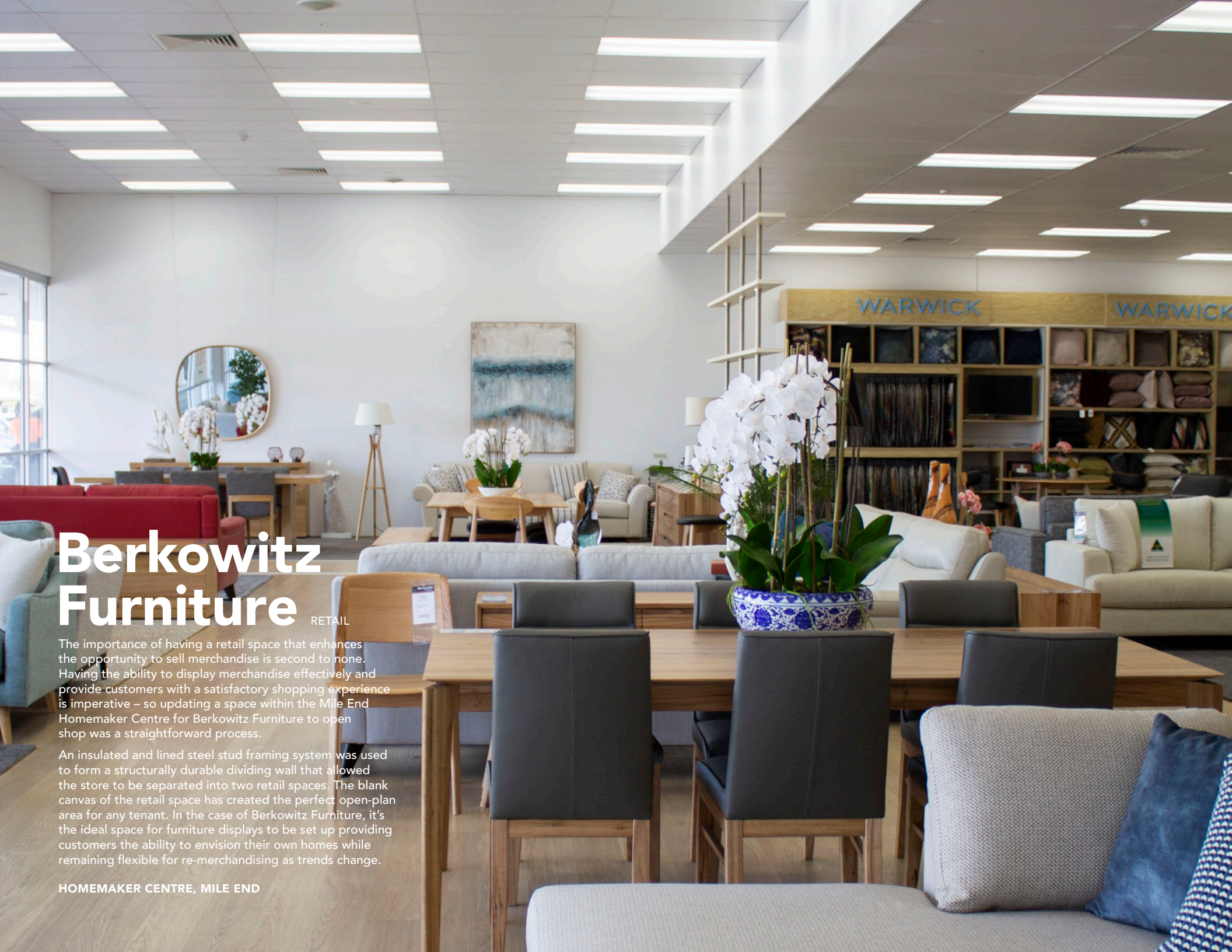


BUILDER: F&E ROCCA • LININGS CONTRACTOR: SA COMPLETE ELECTRICAL

Products Featured: (a) DONN DX Black Suspended Ceiling Grid (b) RenAcoustic Supreme Black Ceiling Tiles

Utilise **black ceilings** to create a sense of never-ending space while maintaining focus on key focal points like aisle directories.

designtip



Berkowitz Furniture

RETAIL

The importance of having a retail space that enhances the opportunity to sell merchandise is second to none. Having the ability to display merchandise effectively and provide customers with a satisfactory shopping experience is imperative – so updating a space within the Mile End Homemaker Centre for Berkowitz Furniture to open shop was a straightforward process.

An insulated and lined steel stud framing system was used to form a structurally durable dividing wall that allowed the store to be separated into two retail spaces. The blank canvas of the retail space has created the perfect open-plan area for any tenant. In the case of Berkowitz Furniture, it's the ideal space for furniture displays to be set up providing customers the ability to envision their own homes while remaining flexible for re-merchandising as trends change.

HOMEMAKER CENTRE, MILE END

Products Featured: (a) Studco 150mm Steel Stud & Track (b) Knauf 13mm Plasterboard

BUILDER: CHAPPELL BUILDERS • LININGS CONTRACTOR: KDM INTERIORS



designtip

Subdivide with **steel stud** walls and create extra retail display space.





AERIAL ADVENTURE PARK

TreeClimb

With a vision to bring the outdoors in, TreeClimb was designed with materials that blend in with surrounding nature. Keeping up with current design trends, shipping containers were brought in to make up the main space of TreeClimb. As the site was based within the Adelaide City Parklands, there were sometimes unavoidable external factors, like poor weather and design changes, which affected the job schedule. "To avoid losing any time, we relied on ADX Depot's flexibility to deliver last minute so we could keep the build on track," explains Steventon's TreeClimb Site Manager Dusty Chapman.

ADX Depot delivered a number of loads of furring channel which were used to line the containers, enabling them to be transformed into an EcoHut with the natural-look that was desired. The EcoHut and equipment rooms are decked out in sealed plywood with ceilings finished with James Hardie's Versilux sheets to ensure a long-term quality finish while reflecting the natural elements of the parklands.

GREENHILL ROAD, ADELAIDE



After nearly four years of planning... we see TreeClimb as a progressive and innovative approach to inner-city tourism.

**Seb Packer,
TreeClimb Owner**



BUILDER: STEVENTONS CONSTRUCTION

Products Featured: (a) James Hardie Versilux® (b) Plywood Panels (Sealed)



5

 adxarchitectural

Medical projects

(a) (b)



480 Specialist Centre

MEDICAL

The purpose-built 480 Specialist Centre offers a new home for specialists and patients with a welcoming environment. Materials were specially selected to suit all clinical requirements in the construction of the Windsor Gardens Day Surgery, ICON Cancer Centre, Australian Clinical Labs, Eye Surgeons SA and more.

With expensive, heavy machinery being mounted on walls and ceilings and the complex internal systems of medical rooms, a strong framework with hospital-grade linings had to be achieved throughout. The anxiety patients and visitors may experience within this environment has been considered in the design, where natural light and warm wood tones along with refreshing coloured finishes work together to form a calming atmosphere. This is also reflected externally with natural coloured linings and warming metallics.

NORTH EAST RD, WINDSOR GARDENS

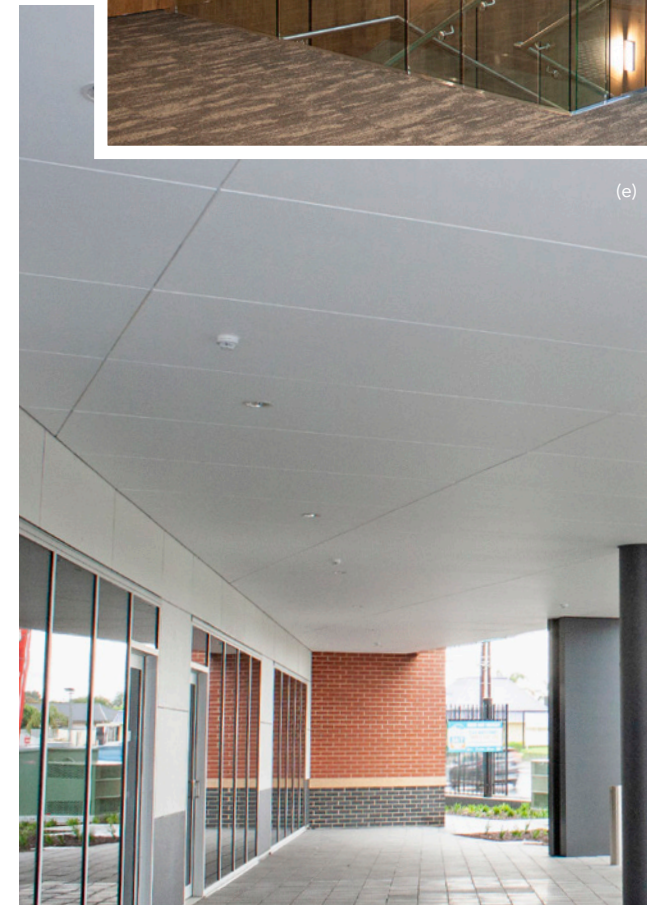
Products Featured: (a) AMF Thermatex® Acoustic Ceiling Tiles (b) DONN DX Suspended Ceiling Grid System (c) Clinikill Antibacterial Access Panel (d) Knauf TruRock Multi-Purpose Plasterboard (e) James Hardie Versilux®

DEVELOPER: MRS PROPERTY • ARCHITECT: CHEESMAN ARCHITECTS • BUILDER: BADGE CONSTRUCTIONS
• LININGS CONTRACTOR: PREMIER LININGS • CLADDING CONTRACTOR: SA CONSTRUCT



designtip

Add strength and resistance to water, fire and sound with one product – **Knauf TruRock Plasterboard.**



Ashford Hospital

MEDICAL

The \$33 million upgrade of Ashford Hospital has seen major transformation this year with the completion of refurbishments made to the main entrance, reception and patient accommodation. Further to this, new additions of the Day Procedure Unit, Chest Pain Unit and Sacred Space have been completed. With tight time frames and working around the facility as they continue to operate, ADX Depot supplied steel stud and track framing plus a variety of specialty plasterboards for these new and refurbished spaces.

The planning for the development was extensive, all coming together in an effort to improve the patient experience with materials carefully selected to meet hygiene requirements of these clinical spaces.

ANZAC HIGHWAY, ASHFORD



didyouknow

You can book an ADX Depot product presentation to learn more about specific products like the **medical-grade ceiling solutions** featured in this project.

Products Supplied: Fiberock Health, Studco Steel Stud & Track, Knauf Plasterboards (Standard, Firesield, Watershield)

ARCHITECT: WILTSHIRE + SWAIN • BUILDER: SCHIAVELLO CONSTRUCTION • LININGS CONTRACTOR: PIOTTO INTERIORS



MEDICAL IMAGING

Calvary Hospital

The \$345 million Calvary Adelaide Hospital is South Australia's largest private hospital development, replacing the current Calvary Wakefield Hospital. The 12 storey, 340 bed capacity, state-of-the-art facility boasts an impressive entrance lobby, admissions area and 24/7 emergency department. Additional to this, the new hospital introduces 16 operating theatres, 4 procedure rooms, patient accommodation, consulting suites, pathology, medical imaging and more.

The Dr Jones and Partners Medical Imaging clinic is just one department of the new facility. Featuring high-density mineral fibre ceiling tiles and slimline offset glazed 3000 Series Aluminium Partitioning, the space is perfect for housing the large machinery required to complete patient scans and tests. Developed with safety, functionality and flexibility in mind, Calvary Hospital through all its departments is built to meet the needs of hospital staff, patients and visitors.

CORNER PULTENEY & ANGAS ST, ADELAIDE

**DR JONES
& PARTNERS**
MEDICAL IMAGING



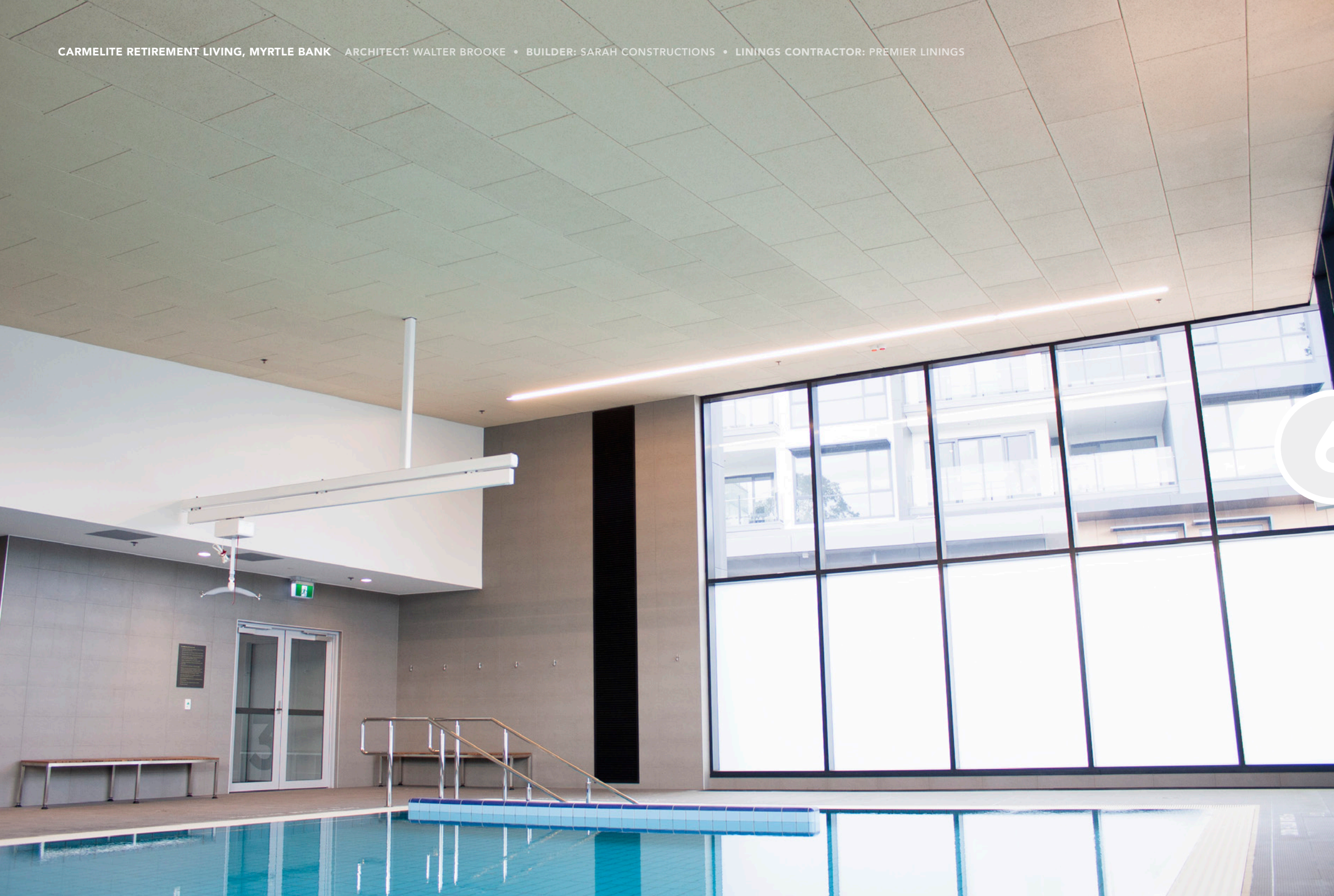
ARCHITECT: CONTECH ARCHITECTURE + CONSTRUCTION • BUILDER: FDC CONSTRUCTION & FITOUT
• LININGS CONTRACTOR: PREMIER LININGS

Calvary Adelaide will redefine the quality and excellence of private hospital/health care in South Australia.

**John Watkins AM,
Calvary Chairman**



Products Featured: (a) 3000 Series Offset Glazed Aluminium Partitioning (b) AMF Thermatex® Aquatec Ceiling Tiles



6



Retirement Living projects

Helping Hand

RESIDENTIAL CARE

Located in Golden Grove, the new Helping Hand Residential Care home is now complete. The 4-story building constructed on a sloped site features resident rooms with 110 beds, vibrant dining rooms, theatrette, health services room, therapy bathroom, café, family stay rooms, courtyards and more.

Premier Linings installed over 2200 pre-cut plywood nogging trimmers, supplied by ADX Depot, to reinforce mounting points for hand-rails, TVs, sinks, shower faucets etc. This added convenience and saved hours of time for this commercial project.

Over 200 Plastaworx® access panels, hatches and T-bar frames were installed throughout the facility to suit all the different ceiling and wall finishes. Knauf Stratopanel also features heavily throughout this building, particularly in the activity hall feature-ceiling. Unwanted sound will be absorbed so that residents can enjoy their experience within the space.

The staggered bulkheads were designed and constructed to look like the ceiling is floating. A high-quality finish to the entire facility has been achieved, particularly evident with shadow-line borders adding extra visual detail.

THE GOLDEN WAY, GOLDEN GROVE

Products Supplied/Featured: Studco Steel Stud & Track, Plastaworx® Access Panels & T-Bar Frames, (a) Knauf Stratopanel (Standard Circular 8/18R)

ARCHITECT: WALTER BROOKE • BUILDER: KENNETT BUILDERS • LININGS CONTRACTOR: PREMIER LININGS

Functional design
& vibrant finishes
for retirement living





RETIREMENT LIVING

Carmelite

Leading the way in Retirement Living, "Carmelite" has brought to life Southern Cross Care's vision. CEO of Southern Cross Care, Mr Andrew Larpent, describes the development as a combination of "magnificent apartments and facilities. Future residents will enjoy a wonderful lifestyle and remain connected to their community." With this in mind, contemporary retirement apartments in a range of floor plans, a health and wellness centre, functional communal areas for residents and more were designed and constructed.

What makes modern design so successful is it's simplicity in details to create beautiful aesthetics which has been achieved with the use of Knauf Stratopanel, acoustic perforated plasterboard. The space is open, light and airy, however, this extra visual appeal has been strategically added to the ceiling. The acoustic board absorbs the extra noise ensuring that the open-plan design is not interrupted by echoes and low sound frequencies that are amplified by large glass facades. It also makes use of the CLEANEO air technology which absorbs odours keeping the air fresh.

To maintain a consistent temperature in the hydro therapy pool area and protect other materials in the space, ADX Depot worked closely with Sarah Constructions and Premier Linings to identify a solution. As a result, Knauf AMF Heradesign® panels were used. These panels are made from wood wool, where natural fibres absorb and filter the moisture in the air - maintaining room temperature and protecting internal framing against rust and corrosion.

SPENCE AVE, MYRTLE BANK



ARCHITECT: WALTER BROOKE • BUILDER: SARAH CONSTRUCTIONS • LININGS CONTRACTOR: PREMIER LININGS

Products Featured: (a) Knauf Stratopanel (Standard Square 8/18Q) (b) AMF Heradesign® Panels (c) James Hardie ExoTec®

Sarah Constructions
*Master Builders SA Award
 for Excellence in Retirement
 Living / Aged Care*

awardwinning



Edwardstown

844 South Road,
Edwardstown SA 5039



Gepps Cross

70 Port Wakefield Rd,
Gepps Cross SA 5094



City CBD

130 West Terrace,
Adelaide SA 5000



www.adxdepot.com.au

Delivery Services

We strive to get our products out to you faster than anyone else. Our guarantee to you is that all deliveries will be fast and in full or its FREE.



- > 30 Minute Turnaround
- > Up to 500kg
- > Up to 3m Lengths
- > Assisted Unload
- > Adelaide CBD*



- > 60 Minute Turnaround
- > Up to 1 Tonne
- > Up to 3m Lengths
- > Assisted Unload
- > Metropolitan Adelaide



- > 90 Minute Turnaround
- > Up to 5 Tonne
- > Up to 6m Lengths
- > Assisted Unload
- > Metropolitan Adelaide



With our 24/7 around the clock delivery service we can get goods to site at specific times, including crane lifts out of hours.

* CBDxpress 30 min delivery service is applicable to orders out of ADX Depot Adelaide being delivered within Adelaide CBD





MICRO-X, TONSLEY VILLAGE ARCHITECT: TRIDENTE BOYCE • BUILDER: SCHIAVELLO GROUP • LININGS CONTRACTOR: H.E. SUGARS & SONS

Plasterboard • Fibre Cement • Ceilings • Partitions • Steel Stud • Insulation



James Hardie



Comfort for Keeps®



specialising in

trusted brands



Book a product presentation

ADX Depot have provided the South Australian market with a supply solution for ceilings, walls and partition products for over 20 years. With this industry experience paired with our large global supplier chains and network, we have access to the latest innovative building products that are widely used in commercial and high-end residential markets.

We want to share this knowledge by going through some of the latest innovative products available on the market with your team through a lunch time presentation within your office.

What's included

Product samples

See and feel innovative solutions first hand

Product booklet

Your reference to everything shown during the presentation

Complimentary lunch

A complimentary lunch with drinks will be provided at your office

Book today!

Phone: (08) 8292 5000

Email: solutions@adxdepot.com.au

subscribe

for ADX Depot case studies & latest product information
www.adxdepot.com.au/newsletters

1 Aluminium Partitioning

1000 Series Centre Glazed Aluminium Partitioning	3
3000 Series Offset Glazed Aluminium Partitioning	43
5000 Series Aluminium Sliding Door	3
5200 Series Centre Glazed Aluminium Partitioning	3
6000 Series Aluminium Hinged Door	3
9000D Series Double Glazed Aluminium Partitioning	3

2 Ceiling Systems

Plastaworx® Access Panels	7, 11, 13, 47
Plastaworx® T-Bar Frames	47
Clinikill Antibacterial Access Panel	39
EzyPelmet	11
RenAcoustic Supreme Black Ceiling Tiles	31
AMF Thermatex® Fine Stratos Ceiling Tiles	13
AMF Thermatex® Thermofon Acoustic Ceiling Tiles	23
AMF Thermatex® Acoustic Ceiling Tiles	21, 39
AMF Thermatex® Aquatec Ceiling Tiles	41
AMF TOPIQ® Sonic Rafts	21
AMF Heradesign® Panels	21, 49
Knauf Stratopanel (Standard Circular 8/18R)	23, 25, 47
Knauf Stratopanel (Standard Square 8/18Q)	49
Acoustic Polyester Panels	25
Balsa Wood Feature Ceiling Panels	29
DONN DX Suspended Ceiling Grid	31, 39
Studco Steel Stud & Track Feature Ceiling Framing	29

3 Wall Systems

Knauf Plasterboard	5, 7, 33, 41
Knauf TruRock	11, 39
Knauf Watershield	13, 41
Knauf Fireshield	13, 29, 41
Studco Steel Stud & Track Framing	7, 33, 41, 47
ShadowMax® Skirting	15, 17
Aluminium Skirting Adhesive Fix	3
Plywood Panels (Sealed)	35
Fiberock Health	41

4 Fibre Cement

James Hardie Versilux®	5, 35, 39
James Hardie ExoTec®	25, 49

5 Doors

Cav-X® Frameless Glass Double Cavity Sliding Doors	15
Cav-X® Shadowline Cavity Sliding Door	17
ShadowMax® Door Jamb	17

6 Door Hardware

Frameless Glass Cavity Sliding Door Hardware	15
--	----

acknowledgements...

ACM Fitouts & Maintenance
Adelaide Dream Homes
APS Built
B&V Ceilings
Badge Constructions
Beach DC Architects
Brown Falconer
Built
Carbine Industries
Ceiling and Wall Contractors
Commercial Fitouts Australia
Chapman Herbert Architects
Chappell Builders
Cheesman Architects

Commercial & General
Contech Architecture +
Construction
Davis + Davis Architects
F&E Rocca
FDC Construction & Fitout
Forefront Building Concepts
& Interiors
GMR Interiors
Golden Grove Interiors
Grieve Gillett Andersen
H.E. Sugars & Sons
Hames Sharley
Hansen Yunken

IA Design
JPE Design
KDM Interiors
Kennett Builders
Klemm Homes
M Samaras Build
Maka Plasterboard
Metropolitan Ceilings
Mossop Construction +
Interiors
Piotto Interiors
Premier Linings
SA Complete Electrical
SA Construct

Sarah Constructions
Schiavello Construction
SnØhetta
Square Ceilings
Square Construction Group
Steventons Construction
Studio Nine
Swanbury Penglase
Synergy Construct
Tim Hodges Architect
UniSpace
Walter Brooke
Wiltshire + Swain
ADX Depot Team