

# EasyLap™ panel



## What is it?

A strong fibre cement base sheet with a shiplap vertical joint, it's finished with a site-applied roll-on textured acrylic paint\*\* to create a rendered look with a subtle vertical joint. Lightweight but durable, EasyLap™ panel is the most easily installed and cost-effective broadwall, textured-cladding solution. Pre-primed sheet with a shiplap edge joint along the two long edges.

## Where do you use it?

As an external wall cladding in residential single and medium-density homes, including alterations and additions, where a uniform broadwall cladding is required. Ideal for full wrap or composite construction designs on either timber or light gauge steel framed homes.

## What are the key benefits?

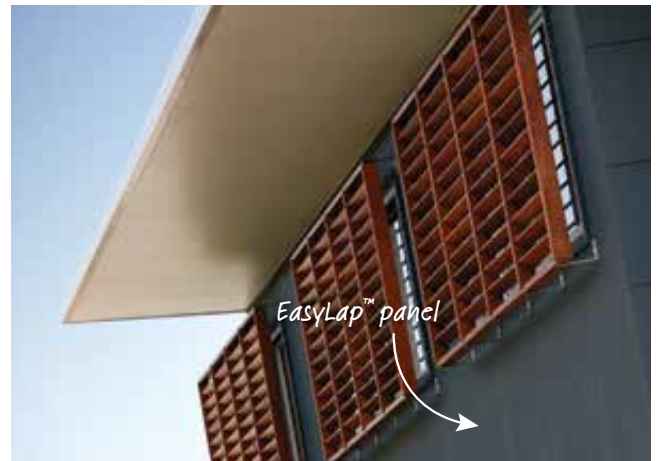
**AFFORDABILITY.** The roller-applied acrylic texture paint finish\*\* eliminates the need for specialised applicators – only two trades (your carpenter and painter) are needed for the complete installation and there's a clean, dry worksite to boot. Lightweight construction means scaffolds are typically up for less time when compared to masonry construction.

**DESIGN FLEXIBILITY.** The joint design gives a subtle vertical shadow line while allowing you to create large painted expanses.

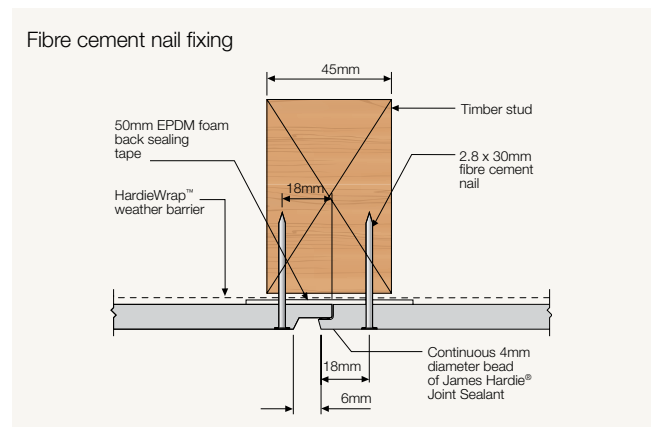
**FAST INSTALLATION.** The exposed vertical shiplap joint enables fast installation because it eliminates the need for a vertical set joint and control joint. Added to this, the large sheets with off-the-shelf corner finishing details give fast broadwall coverage.

**SUSTAINABILITY.** When EasyLap panel is used in conjunction with cavity construction and the right insulation (in accordance with James Hardie's Wall System Thermal Performance Total R-Values Technical Supplement), an R-value of up to 3.44 can be achieved for the wall.

**SECURITY.** Made from thick and solid 8.5mm fibre cement, EasyLap panel is resistant to damage from termites, rot and fire.\*



Cutaway showing joint detail



## What are the accessories?

Accessory	Code	Page
HardieBlade™ Saw Blade 185mm	300660	51
HardieBlade™ Saw Blade 254mm	303375	51
HardieDrive™ Screws 32mm long	305532	51
HardieDrive™ Screws 40mm long	305533	51
James Hardie™ 9mm Aluminium External Corner	305521	52
James Hardie™ 9mm Aluminium Horizontal h Flashing, 3,000mm long	305613	52
James Hardie™ 9mm Aluminium Horizontal h Jointer	305614	52
James Hardie™ 9mm Aluminium Internal Corner	305520	53
James Hardie™ 75x75mm Colorbond® Corner Flashing	305564	53
James Hardie™ 50mm wide Foam Back Sealing Tape	304560	54
James Hardie™ Joint Sealant^ 300ml cartridge	305534	54
James Hardie™ Joint Sealant^ 600ml sausage	305672	54

## What are the sizes?

Product code	Length (mm)	Width (mm)	Thickness (mm)	Mass (kg/m <sup>2</sup> )
404186	3,000	900	8.5	12.46
404184	2,440	1,200	8.5	12.46
404185	3,000	1,200	8.5	12.46

Selling units per pack: 40 sheets

**Note** All dimensions and masses provided are approximate only and subject to manufacturing tolerances. Masses are based on equilibrium moisture content of product.  
 \* When installed and maintained correctly and to the extent set out in James Hardie's published literature current at the time of installation. ^ Not to be used in fire applications.  
 \*\* James Hardie recommends the following product for use in conjunction with the EasyLap™ panels. James Hardie® does not supply these products. Please contact the components manufacturer for information on their warranties and further information on their products.